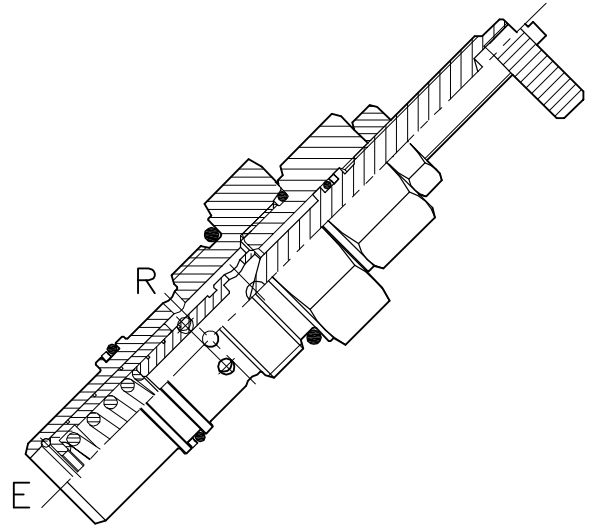
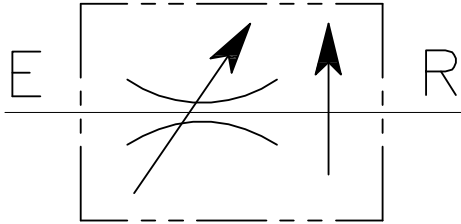


# VSTC-100-...

VALVOLA DI FLUSSO A CARTUCCIA COMPENSATO  
 CARTRIDGE STYLE PRESSURE COMPENSATED  
 FLOW CONTROL VALVE



## CARATTERISTICHE

|                          |                                    |
|--------------------------|------------------------------------|
| Luce nominale            | <b>DN 12</b>                       |
| Portata min/max          | <b>1/100 l/min - 0.26/26.4 GPM</b> |
| Pressione di lavoro max. | <b>350 bar - 5075 PSI</b>          |
| Temperatura ambiente     | <b>-30°C + 50°C</b>                |
| Temperatura olio         | <b>-30°C + 80°C</b>                |
| Filtraggio consigliato   | <b>50 micron</b>                   |
| Coppia di serraggio      | <b>70÷80 Nm</b>                    |
| Peso                     | <b>0.307 Kg</b>                    |

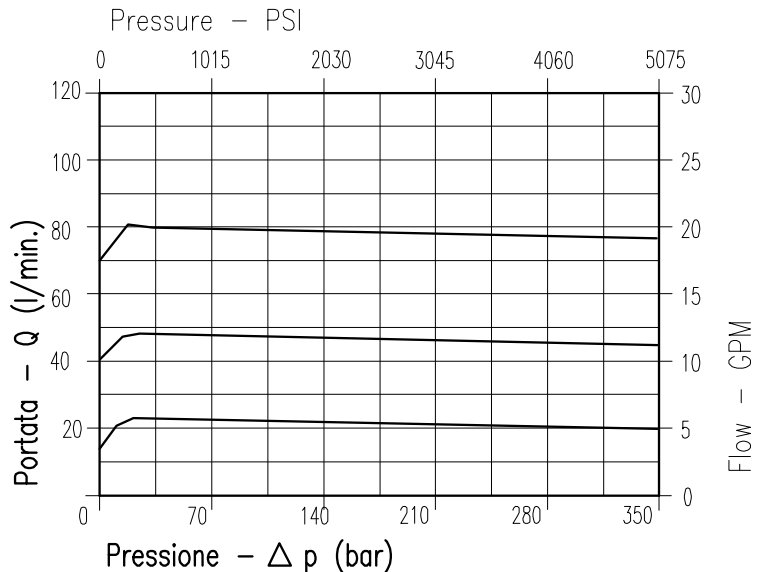
## PERFORMANCE

|                        |
|------------------------|
| Rated size             |
| Min/max flow-rate      |
| Max working pressure   |
| Room temperature       |
| Oil temperature        |
| Recommended filtration |
| Tightening torque      |
| Weight                 |

### NOTE:

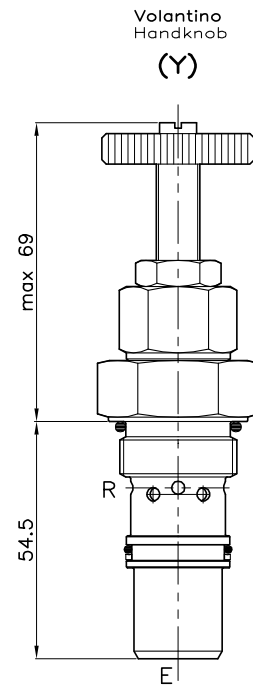
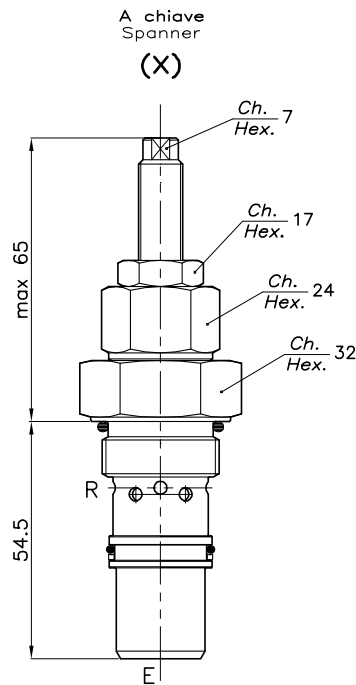
Flusso compensato da E verso R  
 Flusso inverso consentito ma non compensato (funziona in modo strozzato).

Compensated flow from E to R  
 Reverse flow allowed but not compensated (throttle operation)

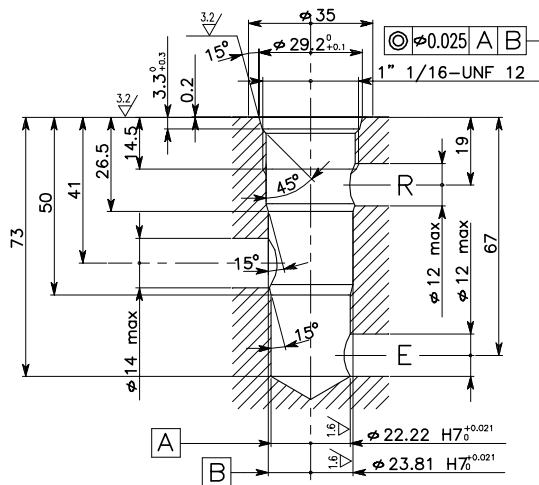


Viscosità olio 46 cSt a 50°C  
 Oil viscosity 46 cSt at 50°C

REGOLAZIONE  
ADJUSTMENT

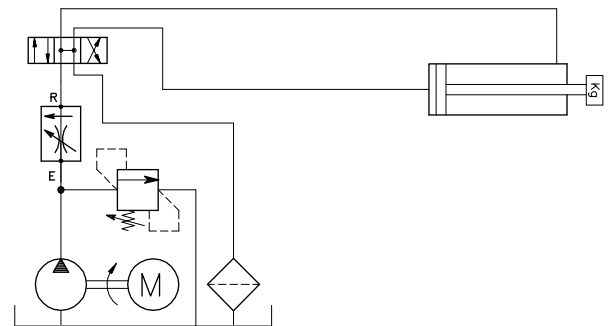


## CAVITA' CAVITY CE.025.N



Si raccomanda l'esatta esecuzione della sede  
The valve seat should be perfectly tooled

## ESEMPIO TIPICO DI CIRCUITO TYPICAL CIRCUIT EXAMPLE



## CODICE DI ORDINAZIONE HOW TO ORDER

004 210 0 X 0

| Regolazione<br>Adjustment |                      |
|---------------------------|----------------------|
| X                         | A chiave - Spanner   |
| Y                         | Volantino - handknob |