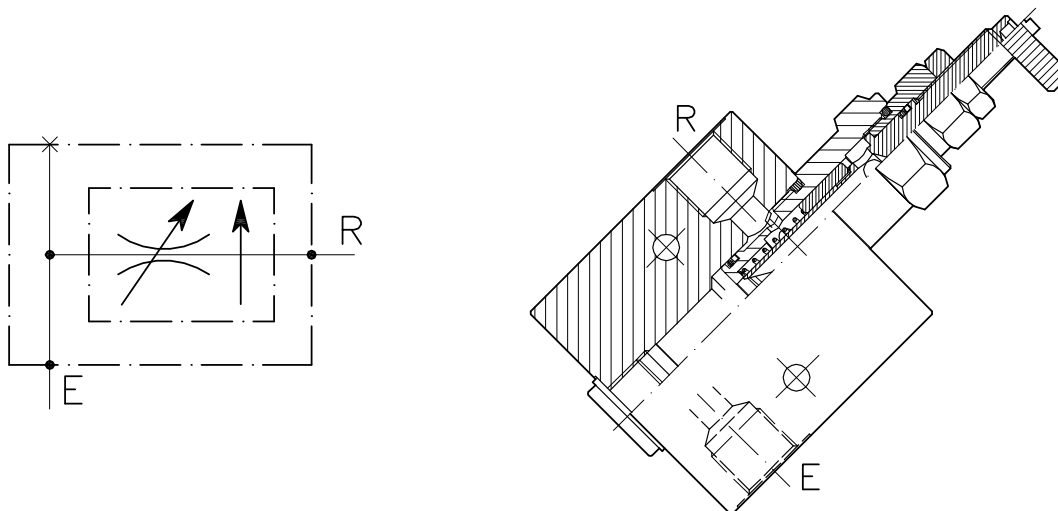


# VSTC-45-C-...-L-...

REGOLATORE DI FLUSSO A CARTUCCIA COMPENSATO CON COLLETTORE IN LINEA  
 CARTRIDGE STYLE PRESSURE COMPENSATED FLOW CONTROL VALVE WITH IN LINE BODY



## CARATTERISTICHE

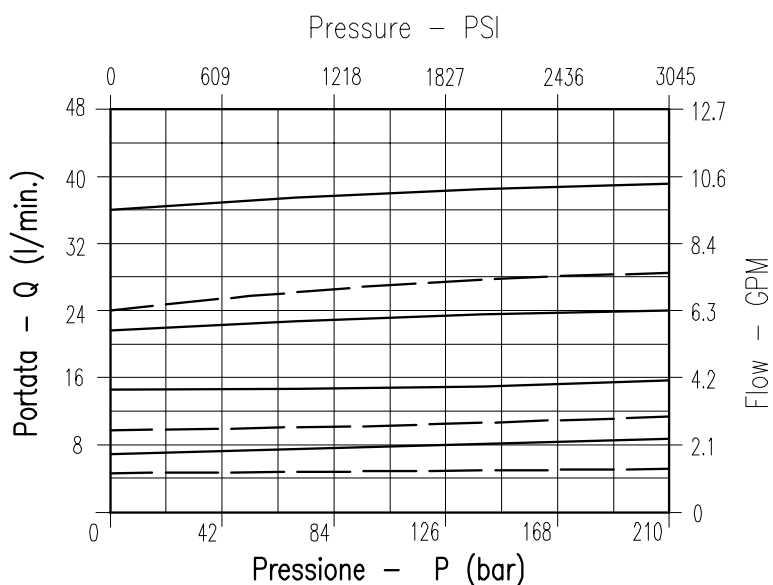
Luce nominale	<b>DN 6</b>
Portata min/max	<b>1/45 l/min - 0.26/11.9 GPM</b>
Pressione di lavoro max.	<b>210 bar - 3045 PSI</b>
Temperatura ambiente	<b>-30°C + 50°C</b>
Temperatura olio	<b>-30°C + 80°C</b>
Filtraggio consigliato	<b>50 micron</b>
Peso	<b>0.636 Kg. 3/8" GAS</b>
Peso	<b>0.483 Kg. 1/2" GAS</b>

## PERFORMANCE

Rated size
Min/max flow-rate
Max working pressure
Room temperature
Oil temperature
Recommended filtration
Weight
Weight

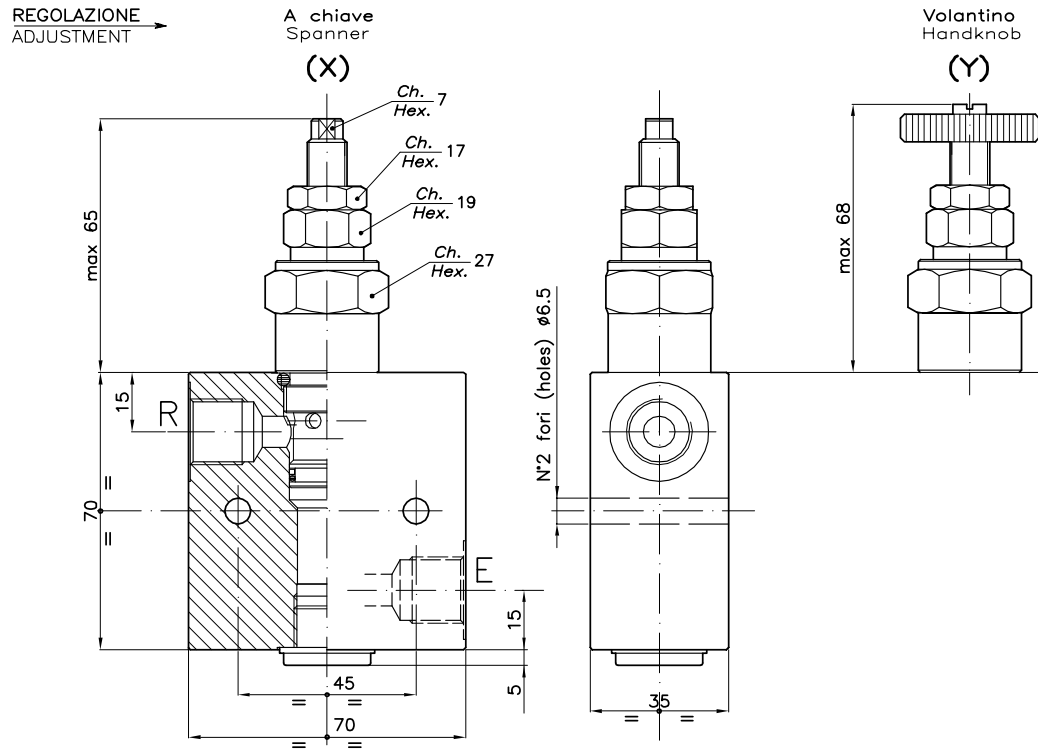
### NOTE:

Flusso compensato da E verso R.  
 Flusso inverso consentito ma non compensato (funziona in modo strozzato).  
 Compensated flow from E to R  
 Reverse flow allowed but not compensated (throttle operation)



Viscosità olio 46 cSt a 50°C  
 Oil viscosity 46 cSt at 50°C

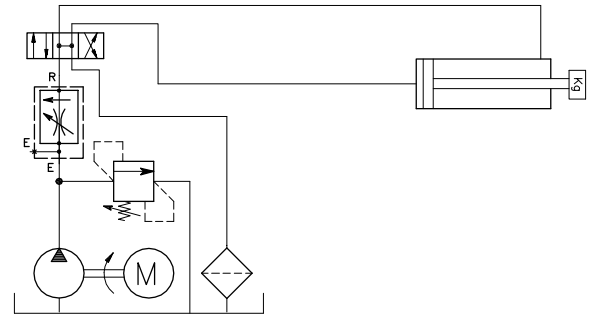
— VSTC-45-C-38  
 - - - VSTC-45-C-12



## DIMENSIONI DIMENSIONS

NUMERO VALVOLA VALVE NUMBER	Attacchi Port size E-R GAS (BSPP)
013	3/8"
014	1/2"

## ESEMPIO TIPICO DI CIRCUITO TYPICAL CIRCUIT EXAMPLE



## CODICE DI ORDINAZIONE HOW TO ORDER

004      013      0      X      0

Numero valvola / Valve number

---

013

---

014

Regolazione Adjustment	
X	A chiave - Spanner
Y	Volantino - handknob