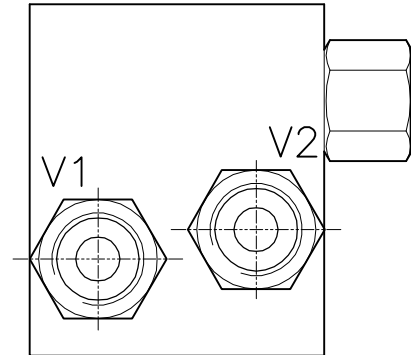
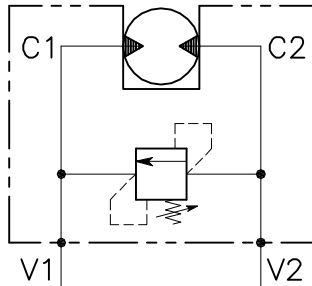


# VSW-VMP-DI-12-FM...

VALVOLA DI MASSIMA PRESSIONE A CARTUCCIA AD AZIONE DIRETTA CON OTTURATORE CONICO E COLLETTORE FLANGIATO

RELIEF, DIRECT ACTING POPPET TYPE VALVE WITH FLANGEABLE BODY

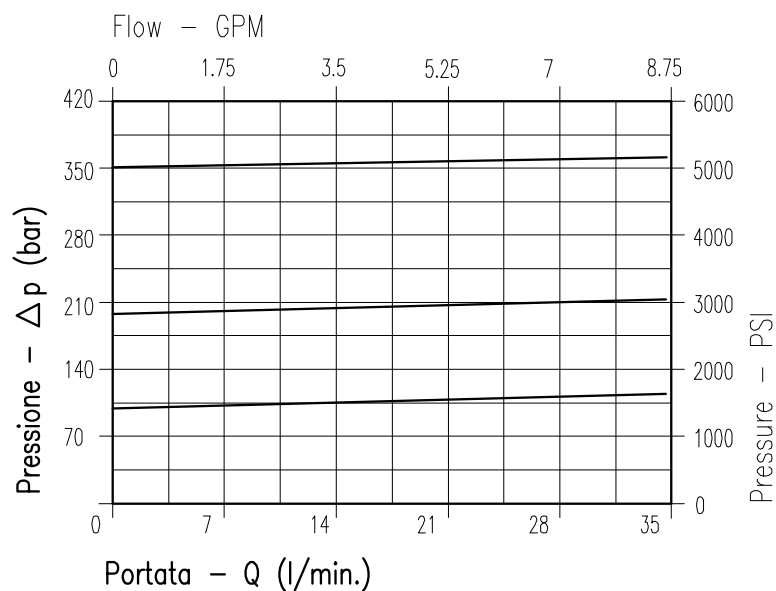


## CARATTERISTICHE

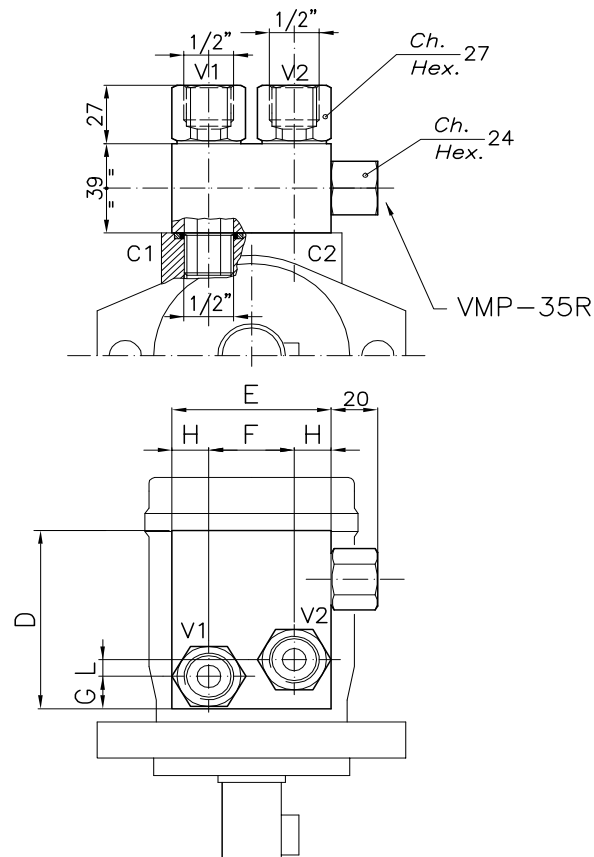
Luce nominale	<b>DN 6</b>
Portata min/max	<b>1/35 l/min - 0.26/9 GPM</b>
Pressione di lavoro max.	<b>350 bar - 5075 PSI</b>
Pressione max. di taratura	<b>350 bar - 5075 PSI</b>
Temperatura ambiente	<b>-30°C + 50°C</b>
Temperatura olio	<b>-30°C + 80°C</b>
Filtraggio consigliato	<b>30÷50 micron</b>
Coppia di serraggio	<b>75÷85 Nm</b>
Peso	<b>0.971 Kg</b>

## PERFORMANCE

Rated size
Min/max flow-rate
Max working pressure
Max setting pressure
Room temperature
Oil temperature
Recommended filtration
Tightening torque
Weight



Viscosità olio 46 cSt a 50°C  
Oil viscosity 46 cSt at 50°C



## DIMENSIONI DIMENSIONS

Campo taratura Setting range			D	E	F	G	H	L	TIPO MOTORE MOTOR TYPE	
049	048	033	90	90	25.4	19.6	32.3	26.4	CHAR-LYNN 2000"	FMCHD
047	046	032	90	60	45.7	15	22.15	0	TRW MAC-MAF CHAR-LYNN S-PLUS	FMCHAR
054	053	052	66	80	40	14	20	8	SAMHYDRAULIK AG/BG/AR	FMSH

## CODICE DI ORDINAZIONE HOW TO ORDER

007 049 0 0 0

Campo taratura / Setting range					
049		048		033	
047		046		032	
054		053		052	
Campo taratura 5÷100 bar (molla colore blu) Setting range 5÷100 bar (blue spring)		Campo taratura 10÷210 bar (molla colore verde) Setting range 10÷210 bar (green spring)		Campo taratura 20÷350 bar (molla colore giallo) Setting range 20÷350 bar (yellow spring)	
Taratura standard (Q=5 l/1')	Incr. press. - bar giro/vite	Taratura standard (Q=5 l/1')	Incr. press. - bar giro/vite	Taratura standard (Q=5 l/1')	Incr. press. - bar giro/vite
Std. bar setting (Q=5 l/1')	Pressure rise - turn of screw	Std. bar setting (Q=5 l/1')	Pressure rise - turn of screw	Std. bar setting (Q=5 l/1')	Pressure rise - turn of screw
80 bar	(--)	180 bar	(--)	220 bar	(--)