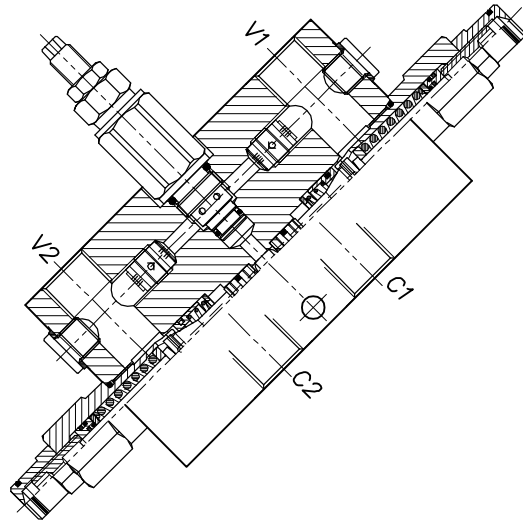
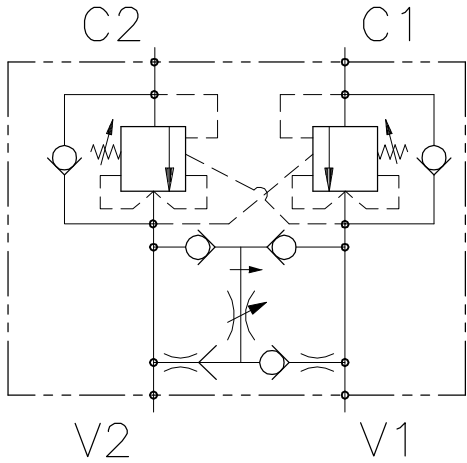


# WB-CC-12-L-VSTC-20-R

VALVOLA BILANCIAMENTO, BLOCCO E CONTROLLO MOVIMENTO PER CENTRO CHIUSO, A DOPPIO EFFETTO PER CONTROLLO ROTAZIONE

DOUBLE COUNTERBALANCE VALVE FOR CLOSED CENTRE SPOOL, FOR SLEWING APPLICATIONS



## CARATTERISTICHE

Luce nominale  
 Portata min/max  
 Pressione di lavoro max.  
 Pressione max. di taratura  
 Rapporto di pilotaggio standard  
 Temperatura ambiente  
 Temperatura olio  
 Filtraggio consigliato  
 Coppia di serraggio  
 Peso

**DN 10**  
**1/60 l/min - 0.26/15 GPM**  
**350 bar - 5075 PSI**  
**350 bar - 5075 PSI**  
**4.25 : 1**  
**-30°C + 50°C**  
**-30°C + 80°C**  
**30 micron**

## PERFORMANCE

Rated size  
 Min/max flow-rate  
 Max working pressure  
 Max setting pressure  
 Standard pilot ratio  
 Room temperature  
 Oil temperature  
 Recommended filtration  
 Tightening torque  
 Weight

### NOTE:

La taratura deve essere **1.3** volte maggiore della pressione indotta dal carico.

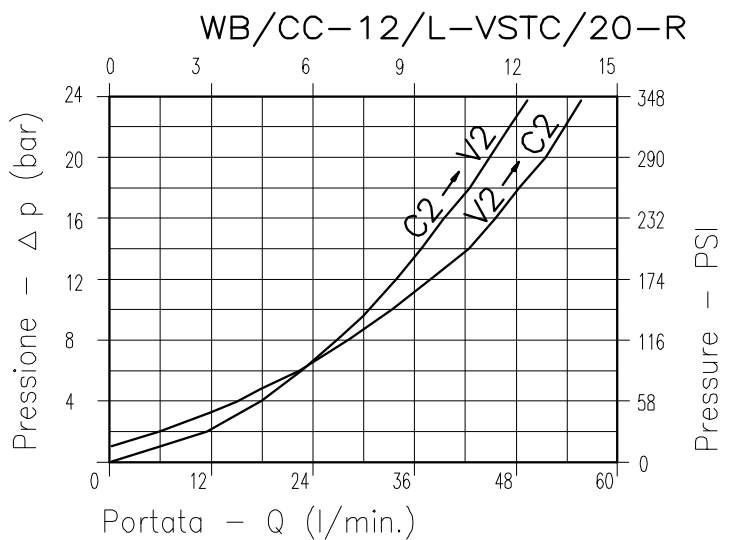
Valve should be set at **1.3** times load induced pressure.

### ESEMPIO/EXAMPLE:

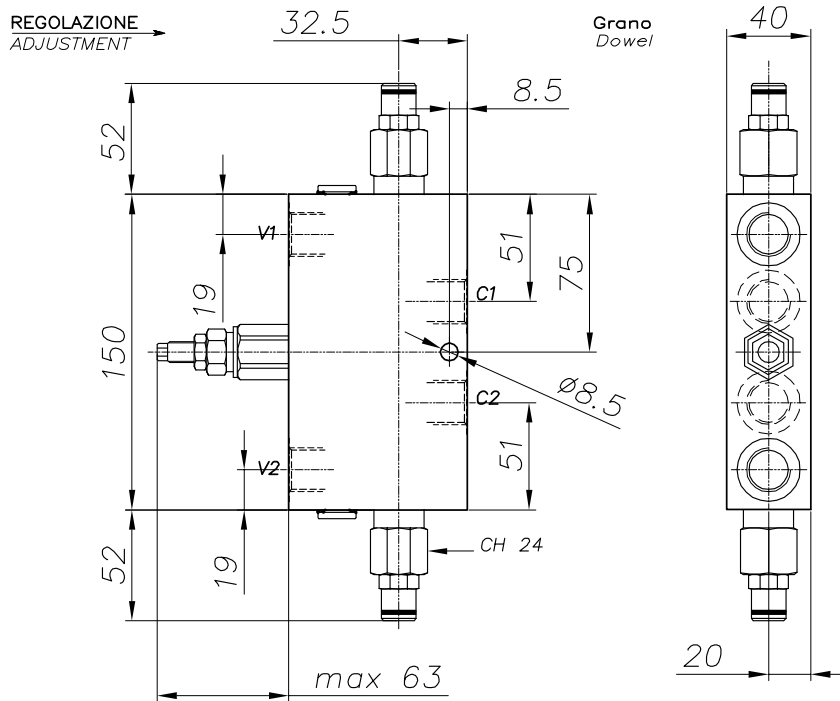
Pressione di lavoro max:

Max working pressure:

**350 bar / 1.3 = 270 bar**



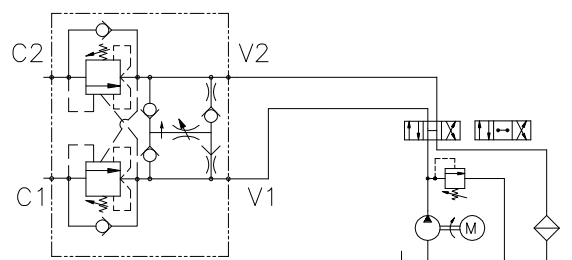
Viscosità olio 46 cSt a 50°C  
 Oil viscosity 46 cSt at 50°C



**DIMENSIONI  
DIMENSIONS**

**ESEMPIO TIPICO DI CIRCUITO  
TYPICAL CIRCUIT EXAMPLE**

Campo taratura Setting range	Corpo Body	Attacchi Port size V2-C2 V1-C1 GAS (BSP)	Luce nominale Rated size DN	Portata max Max flow-rate l/min - GPM
105	Acciaio Steel	1/2"	10	60-15



**CODICE DI ORDINAZIONE  
HOW TO ORDER**

010 489 105

Campo taratura / Setting range

105

Campo taratura 30÷350 bar (molla colore rosso)  
Setting range 30÷350 bar (red spring)

Taratura standard (Q=5 l/1')  
Std. bar setting (Q=5 l/1')  
220 bar

Incr. press. - bar giro/vite  
Pressure rise - turn of screw  
(142)