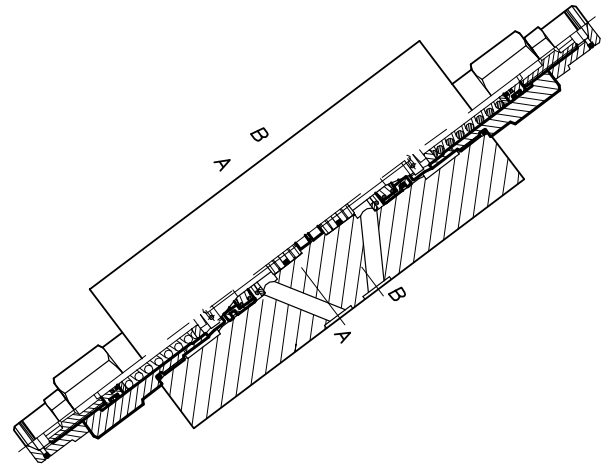
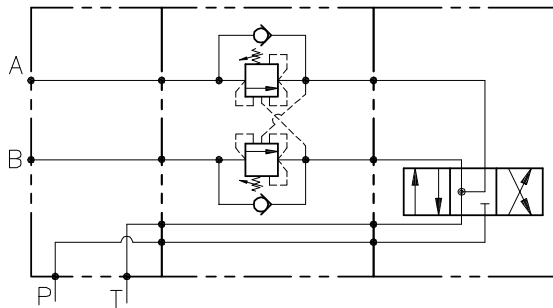


WB-CC-DE-L6-...

VALVOLA BILANCIAMENTO, BLOCCO E CONTROLLO DISCESA
PER CENTRO CHIUSO A DOPPIO EFFETTO CON MONTAGGIO
CETOP

DOUBLE COUNTERBALANCE FOR CLOSED CENTRE SPOOL
WITH SANDWICH INSTALLATION (CETOP)



CARATTERISTICHE

Luce nominale	DN 6
Portata min/max	1/50 l/min - 0.26/12.5 GPM
Pressione di lavoro max.	350 bar - 5075 PSI
Pressione max. di taratura	350 bar - 5075 PSI
Rapporto di pilotaggio standard	4.25 : 1
Temperatura ambiente	-30°C + 50°C
Temperatura olio	-30°C + 80°C
Filtraggio consigliato	30 micron
Peso	
Peso	

PERFORMANCE

Rated size
Min/max flow-rate
Max working pressure
Max setting pressure
Standard pilot ratio
Room temperature
Oil temperature
Recommended filtration
Weight
Weight

NOTE:

La taratura deve essere **1.3** volte maggiore della pressione indotta dal carico.

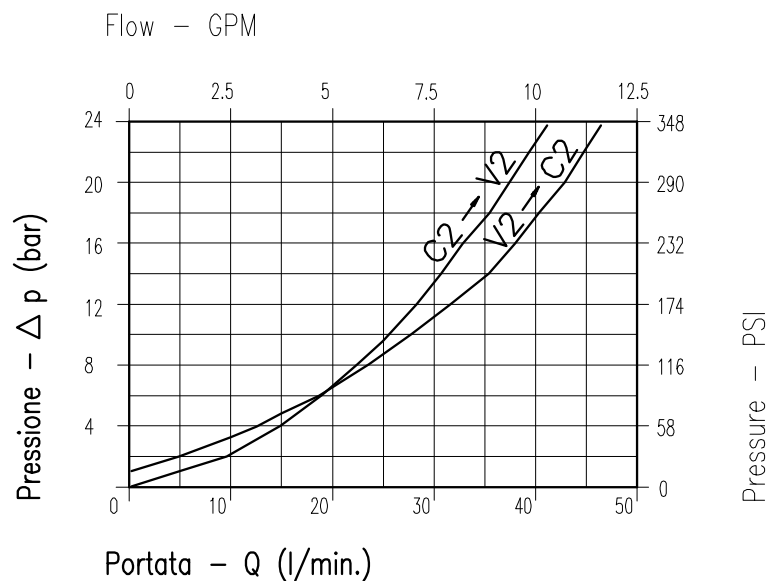
Valve should be set at **1.3** times load induced pressure.

ESEMPIO/EXAMPLE:

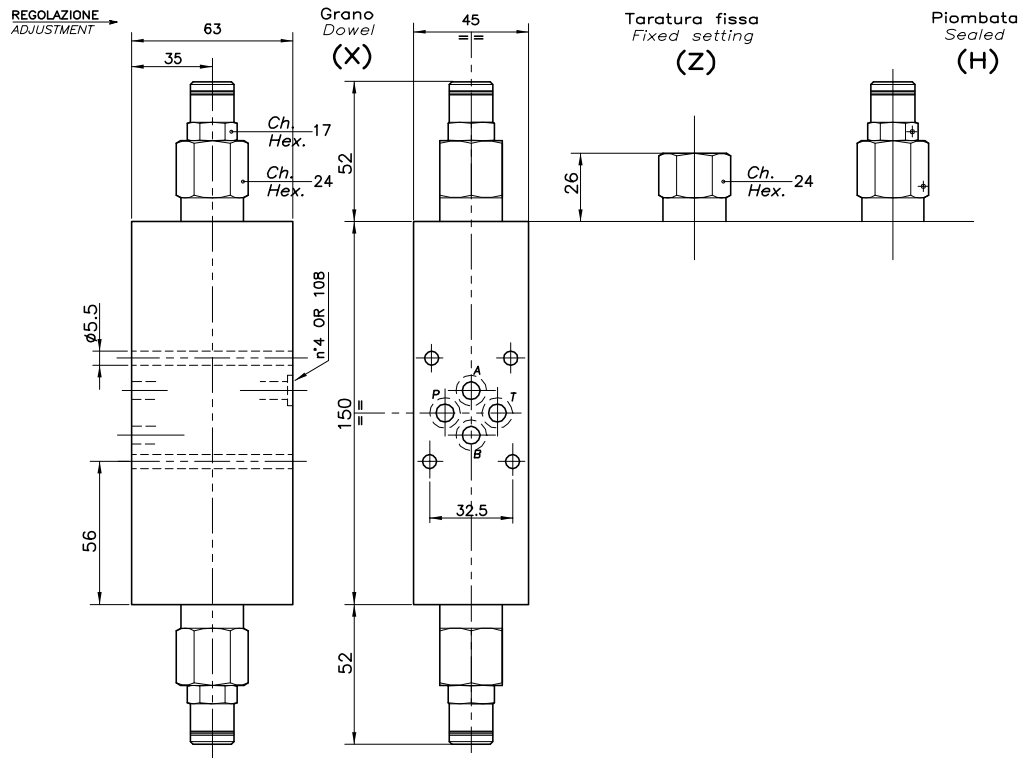
Pressione di lavoro max:

Max working pressure:

350 bar / 1.3 = 270 bar



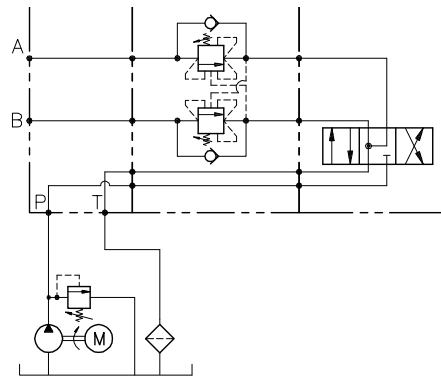
Viscosità olio 46 cSt a 50°C
Oil viscosity 46 cSt at 50°C



DIMENSIONI DIMENSIONS

Campo taratura Setting range	Tipo flangia Flange type	Portata max Max flow-rate l/min - GPM
129 113	CETOP 03	50-12.5

ESEMPIO TIPICO DI CIRCUITO TYPICAL CIRCUIT EXAMPLE



CODICE DI ORDINAZIONE HOW TO ORDER

001 129 0 X 0

Campo taratura / Setting range				Rapporto di pilotaggio Pilot ratios		Regolazione Adjustment	
129		113		O	4.25 : 1	X	Grano - Dowel
Campo taratura 30÷220 bar (molla colore giallo) Setting range 30÷220 bar (yellow spring)		Campo taratura 60÷350 bar (molla colore rosso) Setting range 60÷350 bar (red spring)		D	8 : 1	Z	Taratura fissa - Fixed setting
Taratura standard (Q=5 l/1')	Incr. press. - bar giro/vite	Taratura standard (Q=5 l/1')	Incr. press. - bar giro/vite			H	Piombata - Sealed
Std. bar setting (Q=5 l/1')	Pressure rise - turn of screw	Std. bar setting (Q=5 l/1')	Pressure rise - turn of screw				
210 bar	(56)	350 bar	(142)				