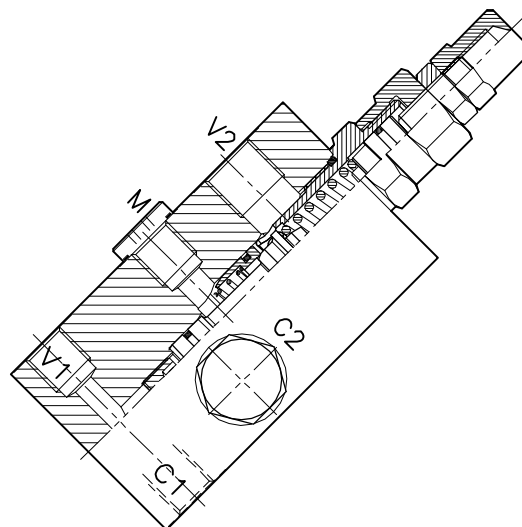
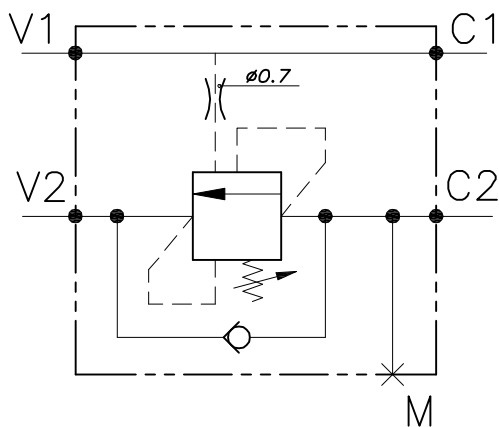


WB-SE-38-L-14FCB

VALVOLA BILANCIAMENTO, BLOCCO E CONTROLLO MOVIMENTO A SEMPLICE EFFETTO CON COLLETTORE FLANGIATO

SINGLE COUNTERBALANCE VALVE WITH FLANGEABLE BODY



CARATTERISTICHE

Luce nominale	DN 8
Portata min/max	1/40 l/min - 0.26/10 GPM
Pressione di lavoro max.	450 bar - 6525 PSI
Pressione max. di taratura	350 bar - 5075 PSI
Rapporto di pilotaggio standard	4.25 : 1
Temperatura ambiente	-30°C + 50°C
Temperatura olio	-30°C + 80°C
Filtraggio consigliato	30 micron
Coppia di serraggio	
Peso	

PERFORMANCE

Rated size
Min/max flow-rate
Max working pressure
Max setting pressure
Standard pilot ratio
Room temperature
Oil temperature
Recommended filtration
Tightening torque
Weight

NOTE:

La taratura deve essere **1.3** volte maggiore della pressione indotta dal carico.

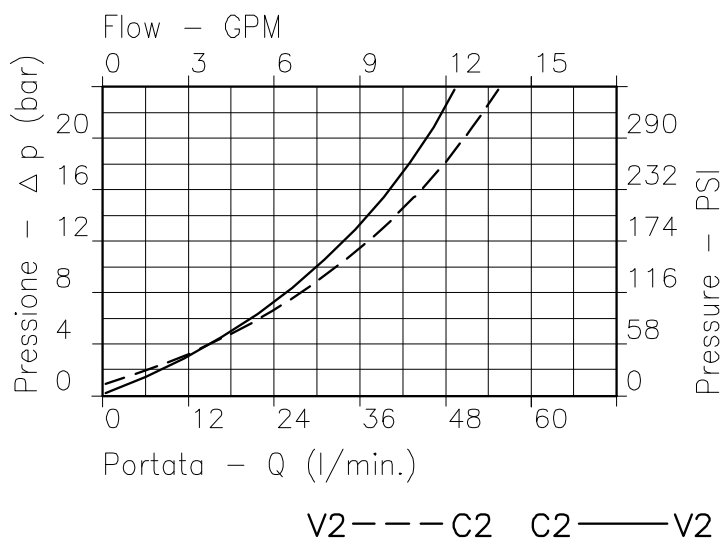
Valve should be set at **1.3** times load induced pressure.

ESEMPIO/EXAMPLE:

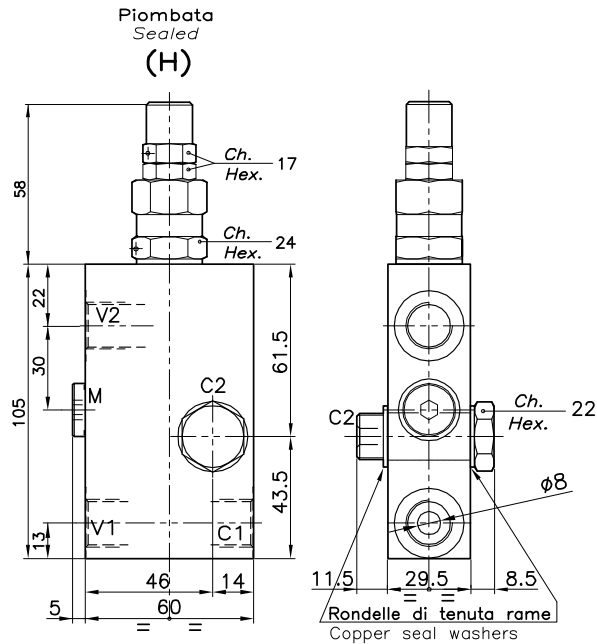
Pressione di lavoro max:

Max working pressure:

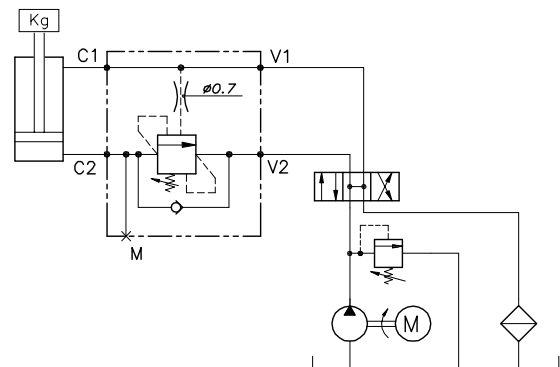
350 bar / 1.3 = 270 bar



Viscosità olio 46 cSt a 50°C
Oil viscosity 46 cSt at 50°C

REGOLAZIONE
 ADJUSTMENT →

DIMENSIONI
DIMENSIONS

Campo taratura Setting range	Attacchi Port size V2-C2 V1-C1 GAS (BSPP)	Attacchi Port size M	Portata max Max flow-rate l/min - GPM
102	3/8"	1/4"	40-10

ESEMPIO TIPICO DI CIRCUITO
TYPICAL CIRCUIT EXAMPLE

CODICE DI ORDINAZIONE
HOW TO ORDER

010 156 102

Campo taratura / Setting range

102

 Campo taratura 60÷350 bar (molla colore giallo)
 Setting range 60÷350 bar (yellow spring)

 Taratura standard (Q=5 l/1')
 Std. bar setting (Q=5 l/1')
270 bar

 Incr. press. - bar giro/vite
 Pressure rise - turn of screw
(138)