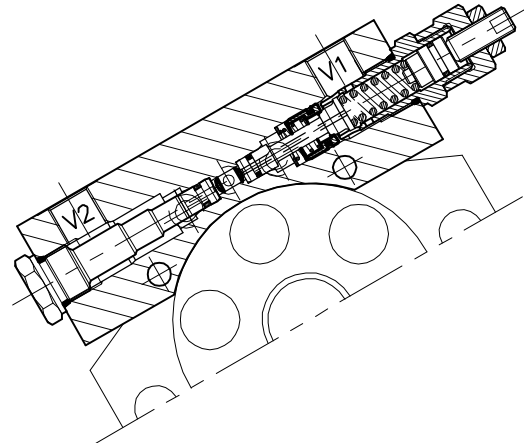
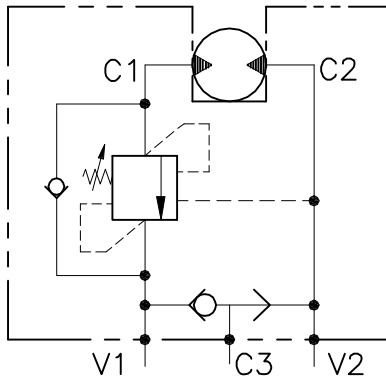


# WB-SE-FMA-VFF-38-...

VALVOLA BILANCIAMENTO, BLOCCO E CONTROLLO MOVIMENTO  
A SEMPLICE EFFETTO FLANGIATA MOTORE

SINGLE COUNTERBALANCE MOTOR FLANGEABLE VALVE



## CARATTERISTICHE

Luce nominale	<b>DN 8</b>
Portata min/max	<b>1/60 l/min - 0.26/15.9 GPM</b>
Pressione di lavoro max.	<b>350 bar - 5075 PSI</b>
Pressione max. di taratura	<b>350 bar - 5075 PSI</b>
Rapporto di pilotaggio standard	<b>4.25 : 1</b>
Temperatura ambiente	<b>-30°C + 50°C</b>
Temperatura olio	<b>-30°C + 80°C</b>
Filtraggio consigliato	<b>30 micron</b>
Coppia di serraggio	
Peso	

## PERFORMANCE

Rated size
Min/max flow-rate
Max working pressure
Max setting pressure
Standard pilot ratio
Room temperature
Oil temperature
Recommended filtration
Tightening torque
Weight

### NOTE:

La taratura deve essere **1.3** volte maggiore della pressione indotta dal carico.

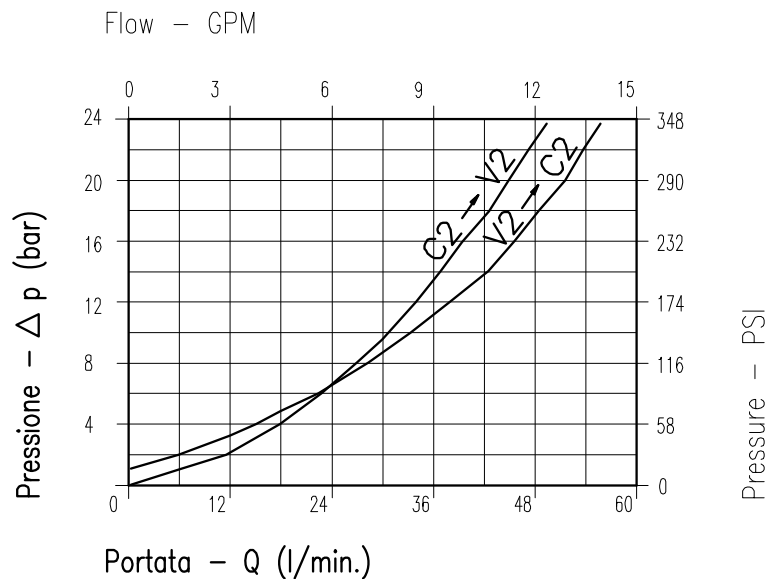
Valve should be set at **1.3** times load induced pressure.

### ESEMPIO/EXAMPLE:

Pressione di lavoro max:

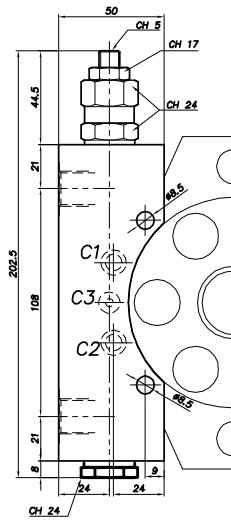
Max working pressure:

**350 bar / 1.3 = 270 bar**

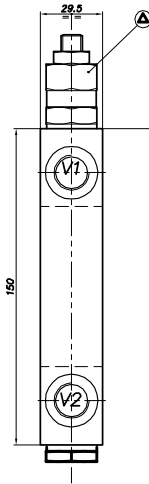


Viscosità olio 46 cSt a 50°C  
Oil viscosity 46 cSt at 50°C

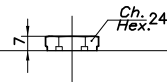
REGOLAZIONE  
ADJUSTMENT



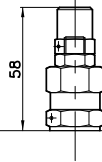
Grano  
Dowel  
(X)



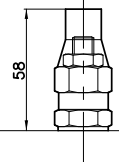
Taratura fissa  
Fixed setting  
(Z)



Piombata  
Sealed  
(H)



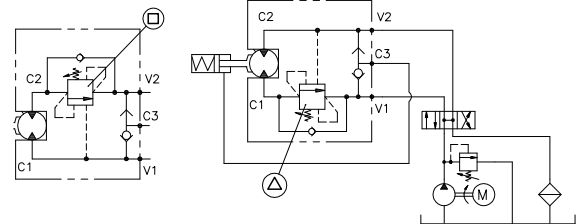
Piombata  
Sealed  
(K)



## DIMENSIONI DIMENSIONS

Campo taratura Setting range	Attacchi Port size C1-C2	Attacchi Port size V1-V2 GAS (BSPP)	Attacchi Port size C3 GAS (BSPP)	Portata Controllata Motor type
□ 131	ø8	3/8"	ø4	C1-V1
△ 156	ø8	3/8"	ø4	C2-V2

## ESEMPIO TIPICO DI CIRCUITO TYPICAL CIRCUIT EXAMPLE



## CODICE DI ORDINAZIONE HOW TO ORDER

007 131 0 X 0

Campo taratura / Setting range

131

156

Campo taratura 30÷220 bar (molla colore verde)  
Setting range 30÷220 bar (green spring)

Taratura standard (Q=5 l/1')  
Std. bar setting (Q=5 l/1')  
220 bar

Incr. press. - bar giro/vite  
Pressure rise - turn of screw  
(56)

Rapporto di pilotaggio  
Pilot ratios

O | 4,25 : 1  
D | 8 : 1

Regolazione  
Adjustment

X | Grano - Dowel  
Z | Taratura fissa - Fixed setting  
H | Piombata - Sealed  
K | Piombata - Sealed