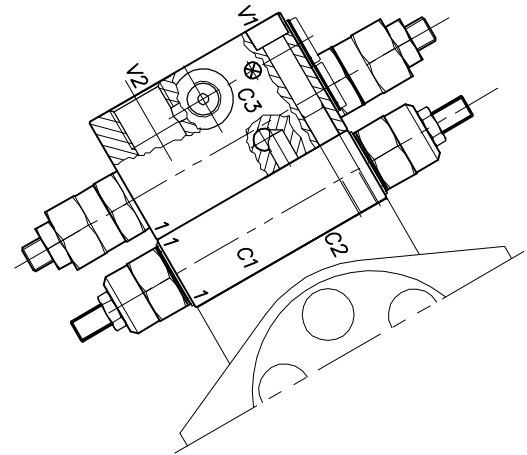
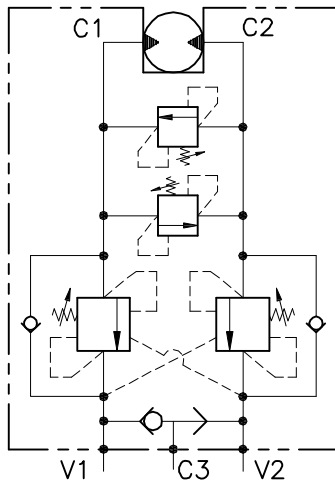


WB-VS-DI-VFF-FMGLR-12-14

VALVOLA BILANCIAMENTO, BLOCCO E CONTROLLO MOVIMENTO A DOPPIO EFFETTO FLANGIATA MOTORE CON VALVOLE DI MASSIMA

DOUBLE COUNTERBALANCE MOTOR FLANGEABLE VALVE WITH RELIEF VALVE



CARATTERISTICHE

Luce nominale	DN 10
Portata min/max	1/60 l/min - 0.26/15.9 GPM
Pressione di lavoro max.	350 bar - 5075 PSI
Pressione max. di taratura	220 bar - 3190 PSI
Rapporto di pilotaggio	4.25 : 1
Temperatura ambiente	-30°C + 50°C
Temperatura olio	-30°C + 80°C
Filtraggio consigliato	30 micron
Coppia di serraggio	
Peso	

PERFORMANCE

Rated size
Min/max flow-rate
Max working pressure
Max setting pressure
Pilot ratio
Room temperature
Oil temperature
Recommended filtration
Tightening torque
Weight

NOTE:

La taratura deve essere **1.3** volte maggiore della pressione indotta dal carico.

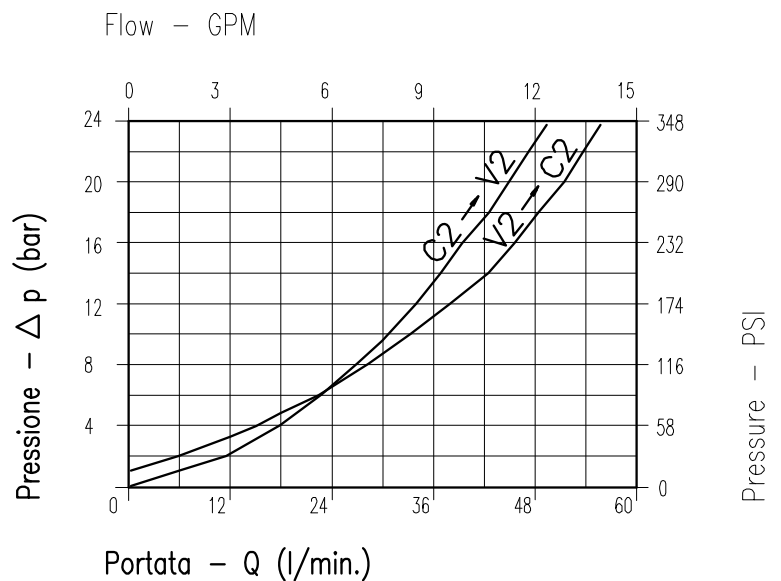
Valve should be set at **1.3** times load induced pressure.

ESEMPIO/EXAMPLE:

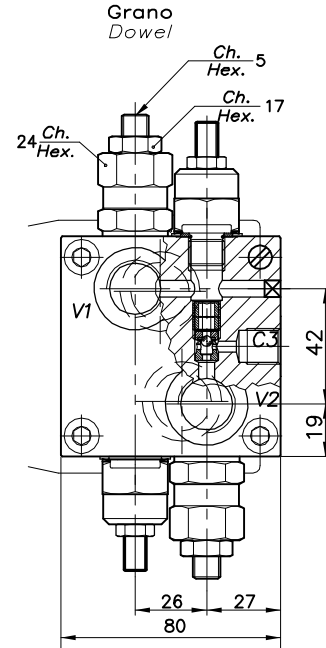
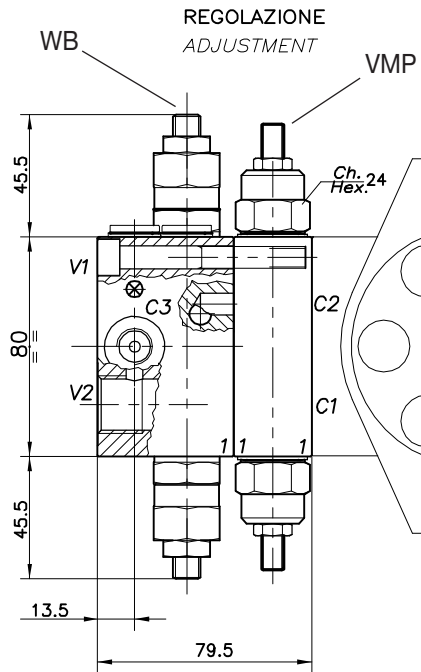
Pressione di lavoro max:

Max working pressure:

350 bar / 1.3 = 270 bar



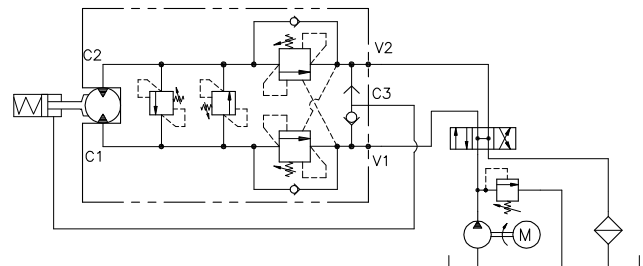
Viscosità olio 46 cSt a 50°C
Oil viscosity 46 cSt at 50°C



DIMENSIONI DIMENSIONS

ESEMPIO TIPICO DI CIRCUITO TYPICAL CIRCUIT EXAMPLE

Campo taratura Setting range	Attacchi Port size V2-C2 V1-C1 GAS (BSPP)	Attacchi Port size C3 GAS (BSPP)	Tipo motore Motor type
362	1/2"	1/4"	Olidrive (44x17)



CODICE DI ORDINAZIONE HOW TO ORDER

010 362 107

Campo taratura / Setting range				
(WB)		362	(VMP)	
Campo taratura 30÷220 bar (molla colore verde)			Campo taratura 30÷220 bar (molla colore verde)	
Setting range 30÷220 bar (green spring)			Setting range 30÷220 bar (green spring)	
Taratura standard (Q=5 l/1')	Incr. press. - bar giro/vite		Taratura standard (Q=5 l/1')	Incr. press. - bar giro/vite
Std. bar setting (Q=5 l/1')	Pressure rise - turn of screw		Std. bar setting (Q=5 l/1')	Pressure rise - turn of screw
220 bar	(56)		140 bar	(56)