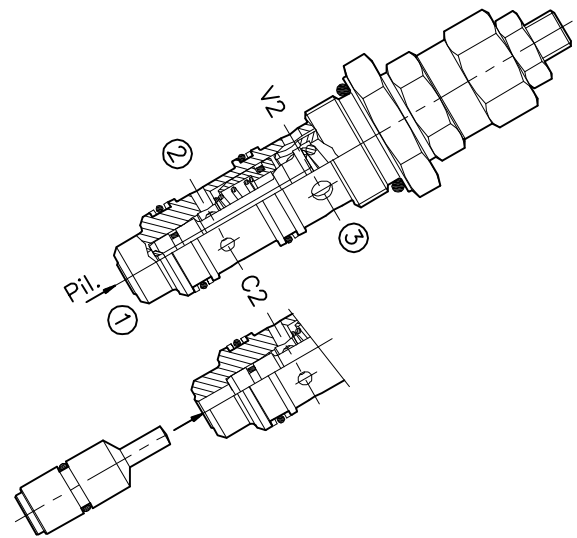
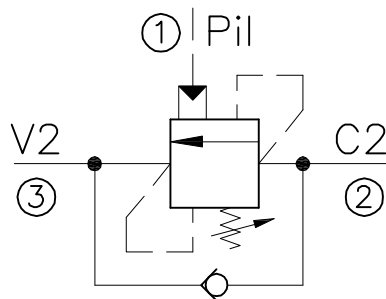


WBC-40-...-...

VALVOLA BILANCIAMENTO, BLOCCO E CONTROLLO MOVIMENTO
CON RAPPORTO DI PILOTAGGIO MODIFICABILE A CARTUCCIA

CARTRIDGE STYLE COUNTERBALANCE VALVE
WITH DIFFERENT PILOT RATIO



CARATTERISTICHE

Luce nominale	DN 10
Portata min/max	1/60 l/min - 0.26/15.9 GPM
Pressione max. di picco	450 bar - 6525 PSI
Pressione max. di taratura	350 bar - 5075 PSI
Rapporto di pilotaggio standard	4.25 : 1
Temperatura ambiente	-30°C + 50°C
Temperatura olio	-30°C + 80°C
Filtraggio consigliato	30 micron
Coppia di serraggio	116÷128 Nm
Peso	0.300 Kg

PERFORMANCE

Rated size
Min/max flow-rate
Max peak pressure
Max setting pressure
Standard pilot ratio
Room temperature
Oil temperature
Recommended filtration
Tightening torque
Weight

NOTE:

La taratura deve essere **1.3** volte maggiore della pressione indotta dal carico.

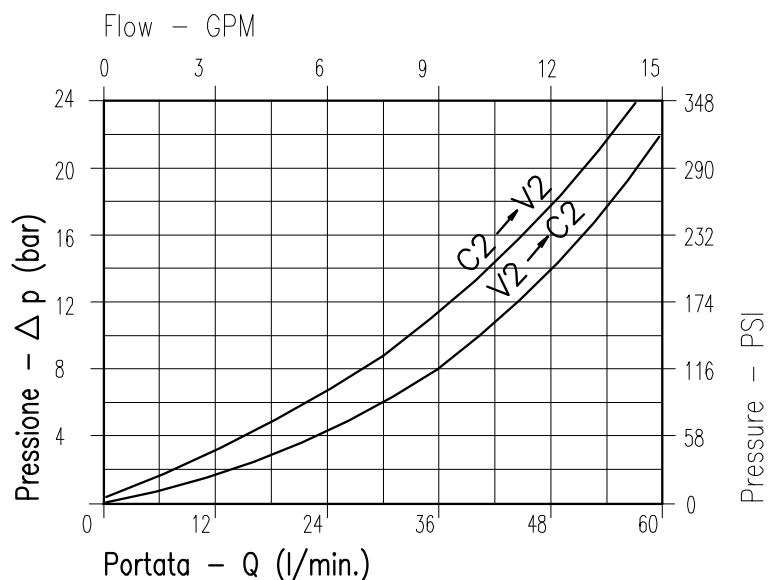
Valve should be set at **1.3** times load induced pressure.

ESEMPIO/EXAMPLE:

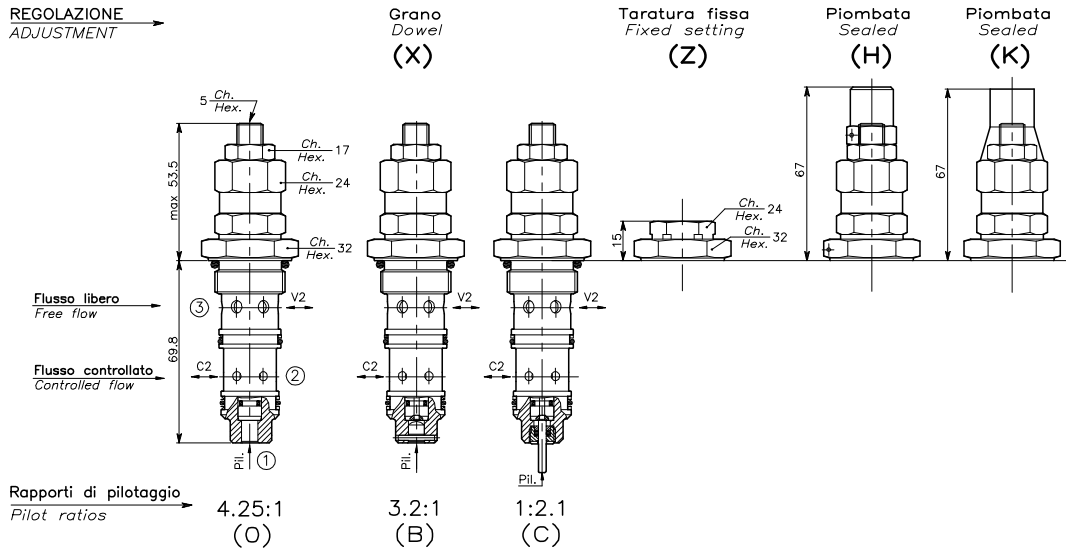
Pressione di lavoro max:

Max working pressure:

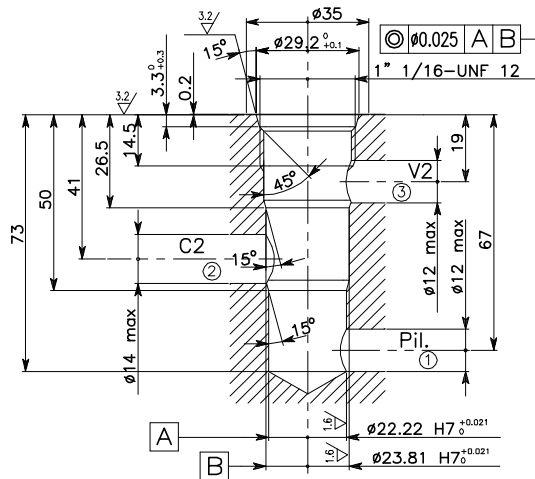
350 bar / 1.3 = 270 bar



Viscosità olio 46 cSt a 50°C
Oil viscosity 46 cSt at 50°C

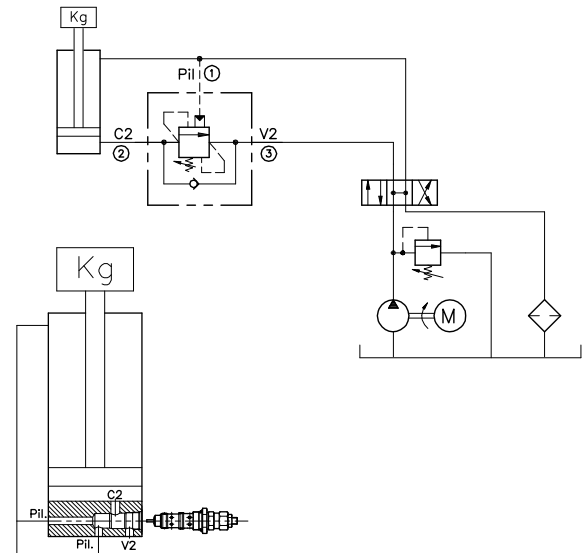


CAVITA' CAVITY CE.025.N



Si raccomanda l'esatta esecuzione della sede
The valve seat should be perfectly tooled

ESEMPIO TIPICO DI CIRCUITO / TYPICAL CIRCUIT EXAMPLE



CODICE DI ORDINAZIONE / HOW TO ORDER

001 235 0 X 0

Campo taratura / Setting range		Rapporto di pilotaggio / Pilot ratios		Regolazione / Adjustment	
235	234	O	X	X	Grano - Dowel
Campo taratura 30÷220 bar (molla colore verde)	Campo taratura 60÷350 bar (molla colore giallo)	B	Z	Z	Taratura fissa - Fixed setting
Setting range 30÷220 bar (green spring)	Setting range 60÷350 bar (yellow spring)	C	H	H	Piombata - Sealed
Taratura standard (Q=5 l/1')	Taratura standard (Q=5 l/1')	D	K	K	Piombata - Sealed
Incr. press. - bar giro/vite	Incr. press. - bar giro/vite				
Std. bar setting (Q=5 l/1')	Std. bar setting (Q=5 l/1')				
210 bar	350 bar				
(56)	(138)				