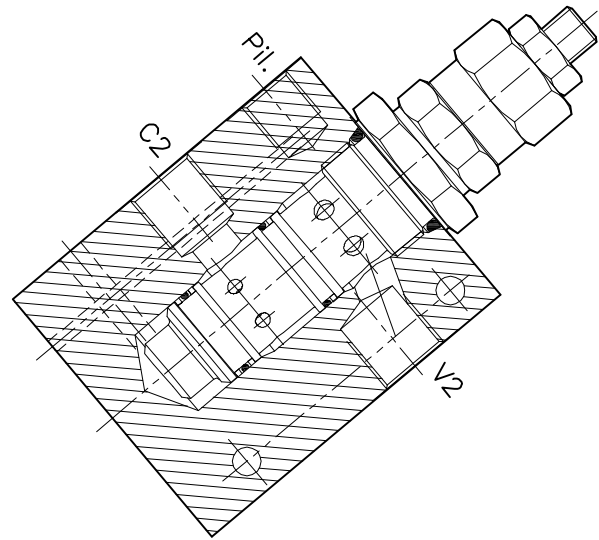
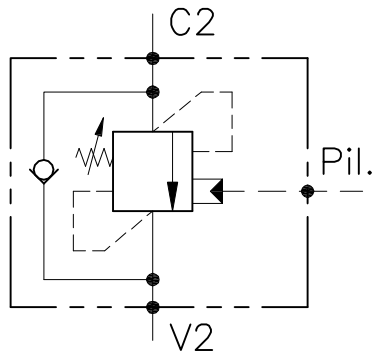


# WBC-C-SE-38-14-PA-...-...

VALVOLA BILANCIAMENTO, BLOCCO E CONTROLLO MOVIMENTO  
A CARTUCCIA, CON PILOTAGGIO ESTERNO

CARTRIDGE STYLE COUNTERBALANCE VALVE  
WITH EXTERNAL PILOT



## CARATTERISTICHE

Luce nominale	<b>DN 4/8</b>
Portata min/max	<b>1/60 l/min - 0.26/15.9 GPM</b>
Pressione max. di picco	<b>450 bar - 6525 PSI</b>
Pressione max. di taratura	<b>350 bar - 5075 PSI</b>
Rapporto di pilotaggio	<b>4.25 : 1</b>
Temperatura ambiente	<b>-30°C + 50°C</b>
Temperatura olio	<b>-30°C + 80°C</b>
Filtraggio consigliato	<b>30 micron</b>
Coppia di serraggio	
Peso	

## PERFORMANCE

Rated size
Min/max flow-rate
Max peak pressure
Max setting pressure
Pilot ratio
Room temperature
Oil temperature
Recommended filtration
Tightening torque
Weight

### NOTE:

La taratura deve essere **1.3** volte maggiore della pressione indotta dal carico.

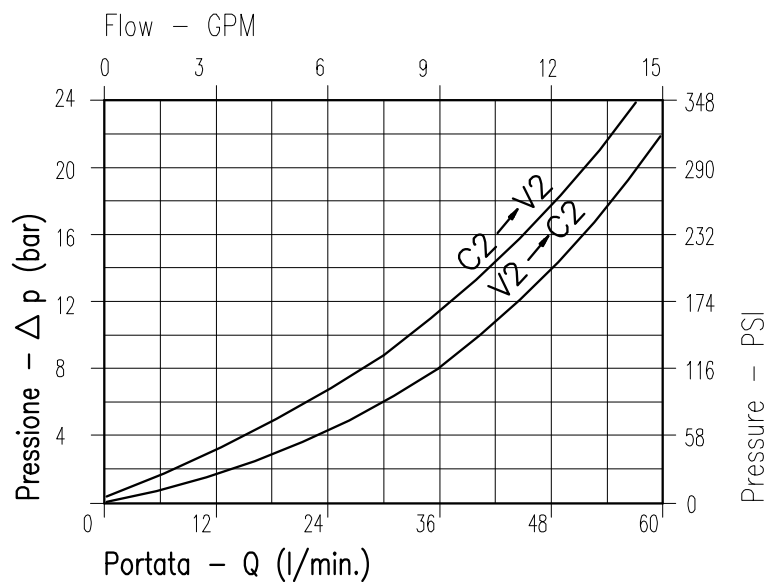
Valve should be set at **1.3** times load induced pressure.

### ESEMPIO/EXAMPLE:

Pressione di lavoro max:

Max working pressure:

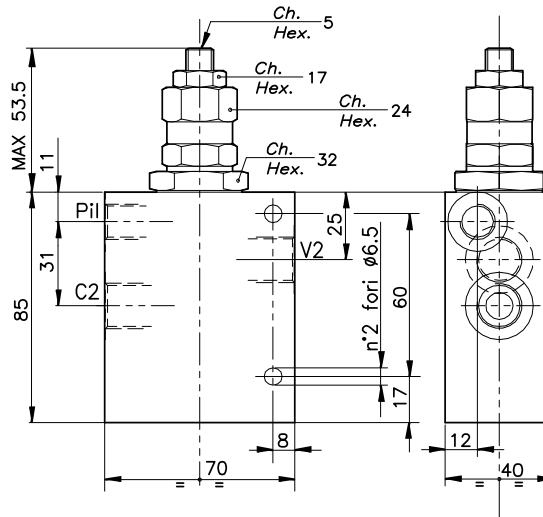
**350 bar / 1.3 = 270 bar**



Viscosità olio 46 cSt a 50°C  
Oil viscosity 46 cSt at 50°C

REGOLAZIONE  
ADJUSTMENT →

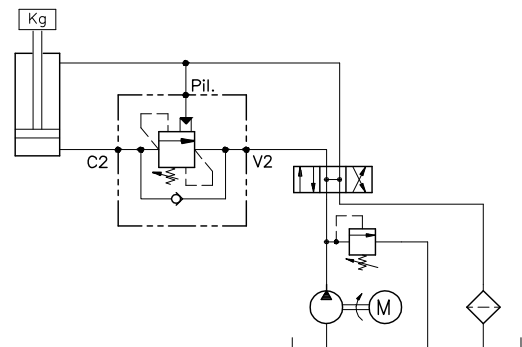
Grano  
Dowel



## DIMENSIONI DIMENSIONS

Campo taratura Setting range	Attacchi Port size V2-C2	Attacchi Port size PIL	Luce nominale Rated size	Portata max Max flow-rate
	GAS (BSPP)	GAS (BSPP)	DN	l/min - GPM
101	3/8"	1/4"	10	60-15

## ESEMPIO TIPICO DI CIRCUITO TYPICAL CIRCUIT EXAMPLE



## CODICE DI ORDINAZIONE HOW TO ORDER

010                      272                      101

Campo taratura / Setting range

101

Campo taratura 60÷350 bar (molla colore giallo)  
Setting range 60÷350 bar (yellow spring)

Taratura standard (Q=5 l/1')  
Std. bar setting (Q=5 l/1')  
350 bar

Incr. press. - bar giro/vite  
Pressure rise - turn of screw  
(138)