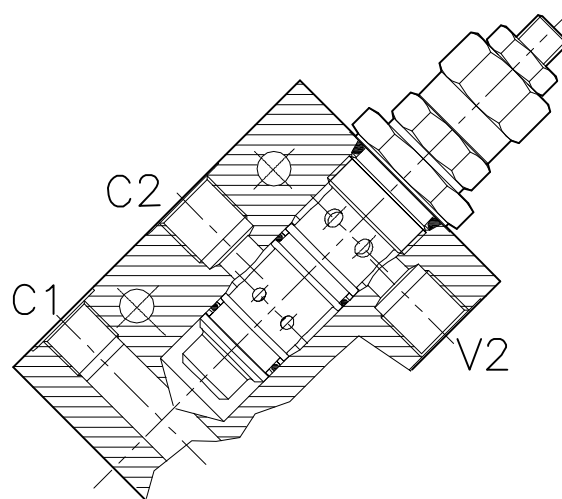
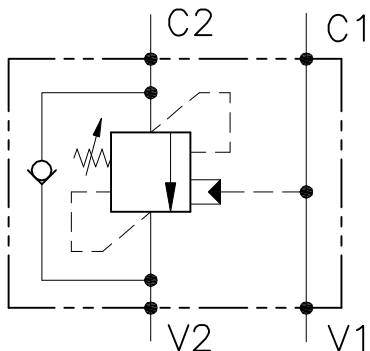


# WBC-C-SE-...-L-...-...

VALVOLA BILANCIAMENTO, BLOCCO E CONTROLLO MOVIMENTO  
A CARTUCCIA, CON COLLETTORE IN LINEA

CARTRIDGE STYLE COUNTERBALANCE VALVE WITH IN LINE BODY



## CARATTERISTICHE

Luce nominale

**DN 8/10**

Portata min/max

**1/60 l/min - 0.26/15.9 GPM**

Pressione max. di picco

**450 bar - 6525 PSI**

Pressione max. di taratura

**350 bar - 5075 PSI**

Rapporto di pilotaggio standard

**4.25 : 1**

Temperatura ambiente

**-30°C + 50°C**

Temperatura olio

**-30°C + 80°C**

Filtraggio consigliato

**30 micron**

Coppia di serraggio

Peso

## PERFORMANCE

Rated size

Min/max flow-rate

Max peak pressure

Max setting pressure

Standard pilot ratio

Room temperature

Oil temperature

Recommended filtration

Tightening torque

Weight

### NOTE:

La taratura deve essere **1.3** volte maggiore della pressione indotta dal carico.

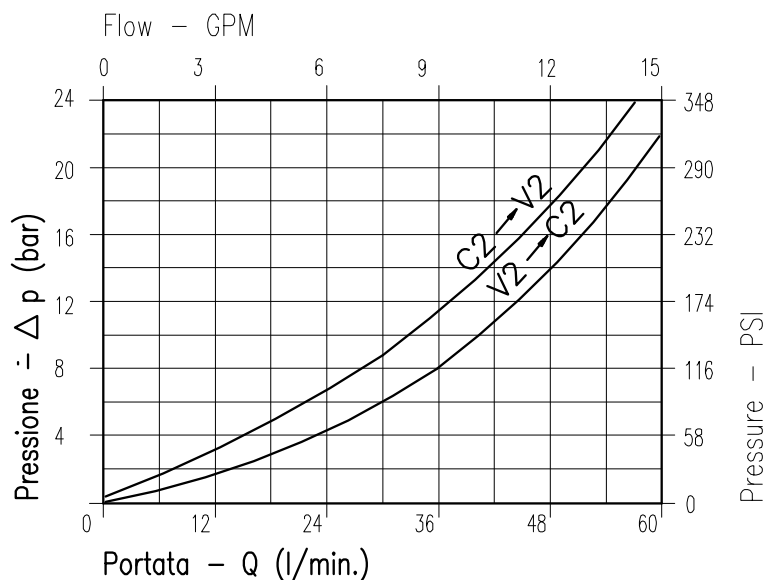
Valve should be set at **1.3** times load induced pressure.

### ESEMPIO/EXAMPLE:

Pressione di lavoro max:

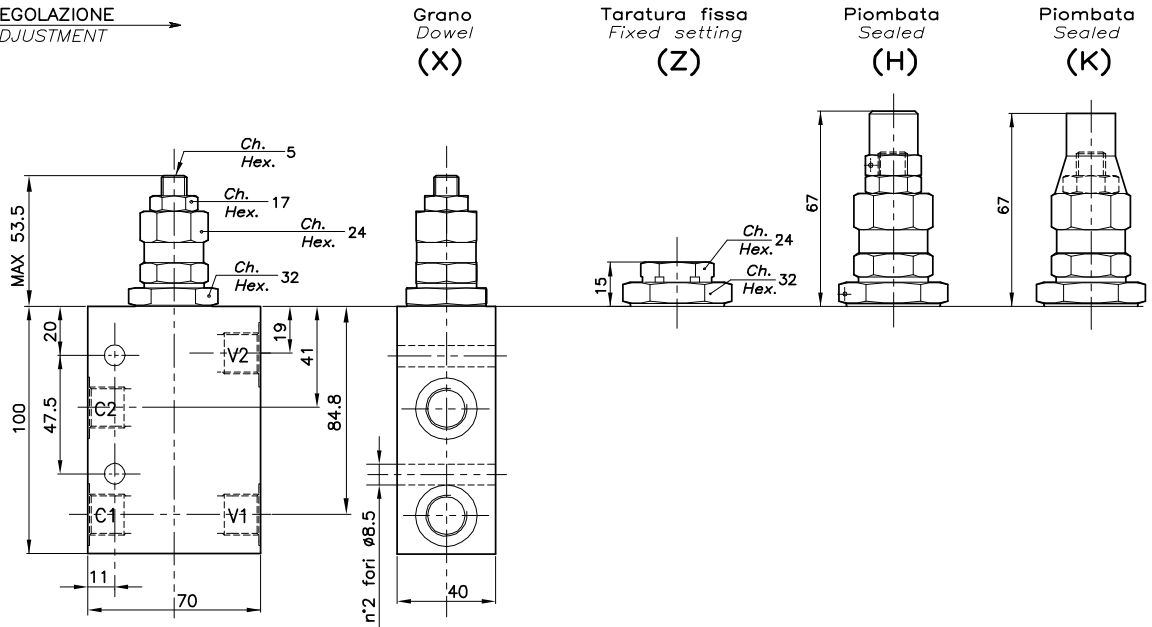
Max working pressure:

**350 bar / 1.3 = 270 bar**



Viscosità olio 46 cSt a 50°C  
Oil viscosity 46 cSt at 50°C

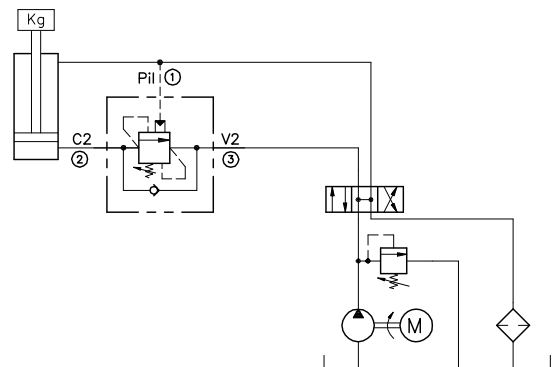
REGOLAZIONE  
ADJUSTMENT →



## DIMENSIONI DIMENSIONS

Campo taratura Setting range		Attacchi Port size V2-C2 V1-C1 GAS (BSPP)	Luce nominale Rated size DN	Portata max Max flow-rate l/min - GPM
281	280	3/8"	8	40-10
283	282	1/2"	10	60-15

## ESEMPIO TIPICO DI CIRCUITO TYPICAL CIRCUIT EXAMPLE



## CODICE DI ORDINAZIONE HOW TO ORDER

001 281 0 X 0

Campo taratura / Setting range			
281		280	
283		282	
Campo taratura 30÷220 bar (molla colore verde)		Campo taratura 60÷350 bar (molla colore giallo)	
Setting range 30÷220 bar (green spring)		Setting range 60÷350 bar (yellow spring)	
Taratura standard (Q=5 l/1')	Incr. press. - bar giro/vite	Taratura standard (Q=5 l/1')	Incr. press. - bar giro/vite
Std. bar setting (Q=5 l/1')	Pressure rise - turn of screw	Std. bar setting (Q=5 l/1')	Pressure rise - turn of screw
210 bar	(56)	350 bar	(138)

Rapporto di pilotaggio Pilot ratios		Regolazione Adjustment	
O	4.25 : 1	X	Grano - Dowel
B	3.2 : 1	Z	Taratura fissa - Fixed setting
C	1 : 2.1	H	Piombata - Sealed
D	8 : 1	K	Piombata - Sealed