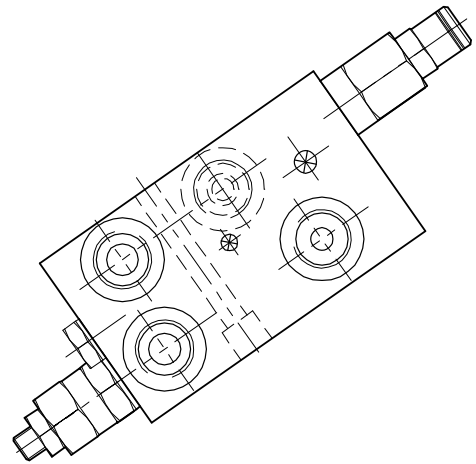
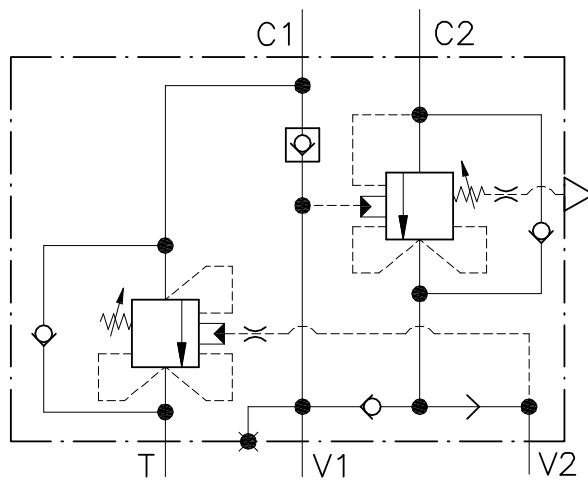


WR-CC1-DE-12-L-...

VALVOLA BILANCIAMENTO, BLOCCO E CONTROLLO MOVIMENTO A DOPPIO EFFETTO CON FUNZIONE RIGENERATIVA
DOUBLE COUNTERBALANCE VALVE WITH REGENERATIVE FUNCTION



CARATTERISTICHE

Luce nominale	DN 8
Portata max in V1.V2	40 l/min - 10.5 GPM
Pressione di lavoro max.	350 bar - 5075 PSI
Pressione max. di taratura	350 bar - 5075 PSI
Temperatura ambiente	-30°C + 50°C
Temperatura olio	-30°C + 80°C
Filtraggio consigliato	30 micron
Peso	

PERFORMANCE

Rated size
Max flow in V1.V2 port
Max working pressure
Max setting pressure
Room temperature
Oil temperature
Recommended filtration
Weight

NOTE:

La taratura deve essere **1.3** volte maggiore della pressione indotta dal carico.

Valve should be set at **1.3** times load induced pressure.

ESEMPIO/EXAMPLE:

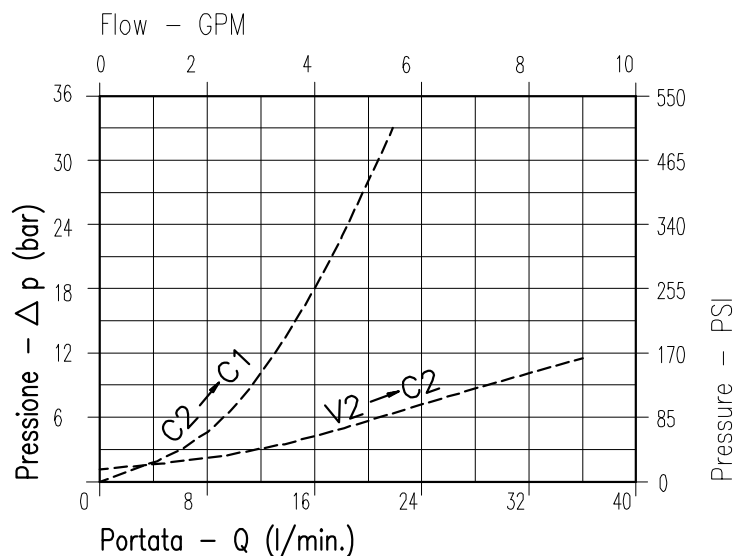
Pressione di lavoro max:

Max working pressure:

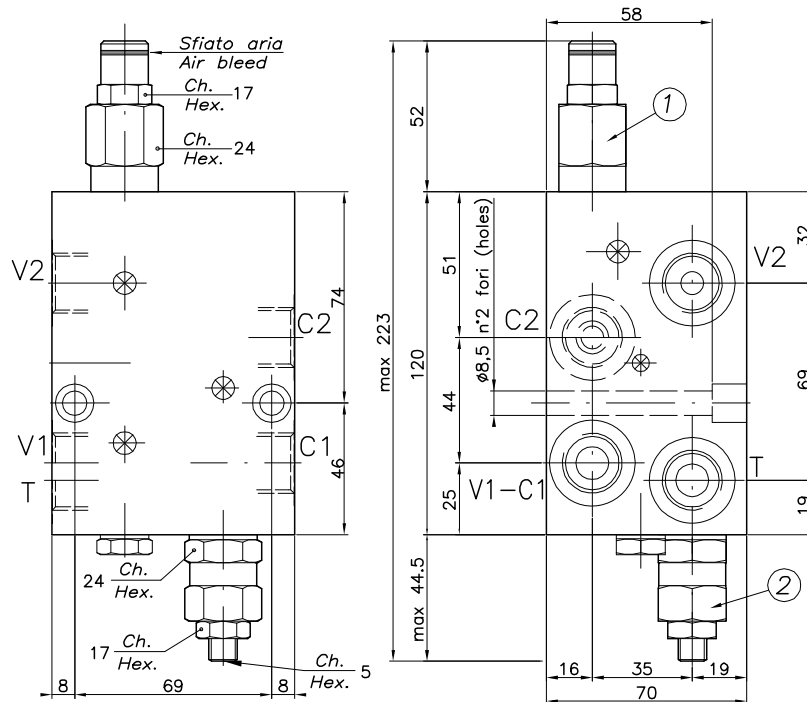
350 bar / 1.3 = 270 bar

Valvola con scarico rapido da C1 - portata massima 60 l/min.

Valve with a fast discharge from C1 - 60 l/min maximum flow rate.



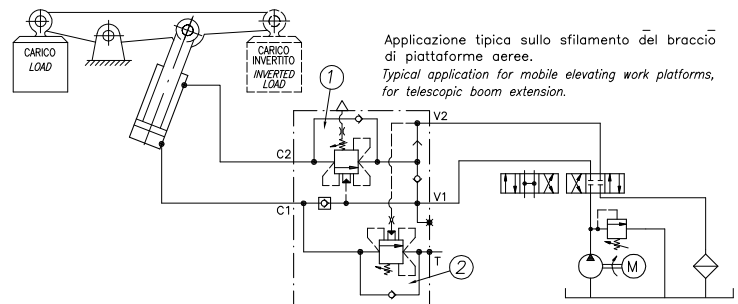
Viscosità olio 46 cSt a 50°C
Oil viscosity 46 cSt at 50°C



ESEMPIO TIPICO DI CIRCUITO TYPICAL CIRCUIT EXAMPLE

DIMENSIONI DIMENSIONS

Campo taratura Setting range		Attacchi filettati Threaded connections Bocche - Ports ISO 1179-1 (BSPP) V2-C2 / V1-C1
543	544	G1/2



CODICE DI ORDINAZIONE HOW TO ORDER

006				543				0		X		0			
Campo taratura / Setting range				543				544				Rapporto di pilotaggio Pilot ratios		Regolazione Adjustment	
Campo taratura 30÷220 bar (molla colore verde) Setting range 30÷220 bar (green spring)				Campo taratura 60÷350 bar (molla colore giallo) Setting range 60÷350 bar (yellow spring)				O 4.25 : 1		X Grano - Dowel					
Taratura standard (Q=5 l/1')		Incr. press. bar giro/vite		Taratura standard (Q=5 l/1')		Incr. press. - bar giro/vite		D 8 : 1							
Std. bar setting (Q=5 l/1')		Pressure rise - bar/turn		Std. bar setting (Q=5 l/1')		Pressure rise - bar/turn									
220 bar		(56)		350 bar		(138)									