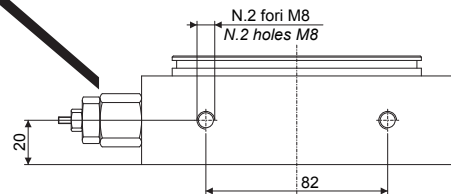


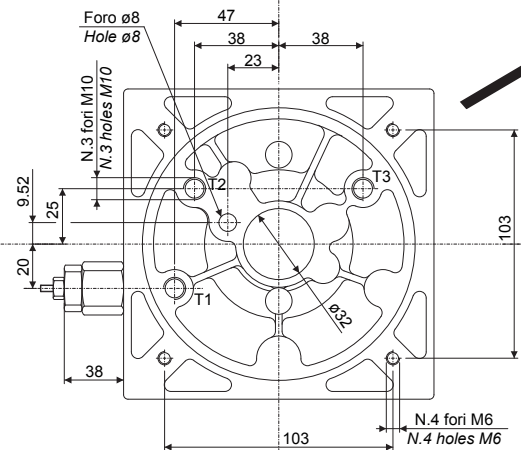
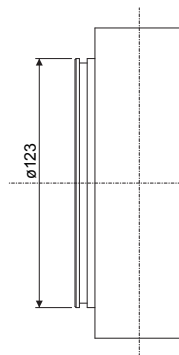
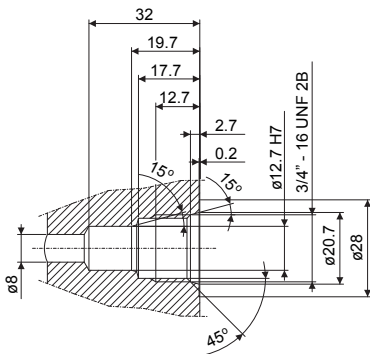
# BLOCCO CENTRALE "SEMPLICE EFFETTO" CENTRAL MANIFOLD "SIMPLE EFFECT"



Codice valvola di massima Relief valve part-number	Taratura Setting
MCR-V1-F	20-130 Bar
MCR-V2-F	40-240 Bar

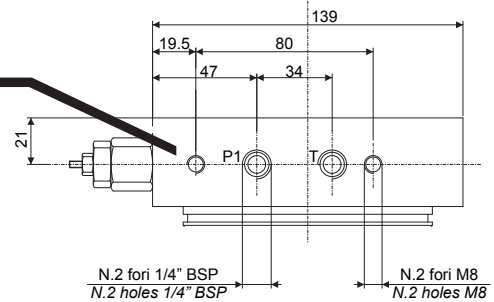


Sede valida per valvola di massima ed elettrovalvola  
Seating for relief valve and electric valve

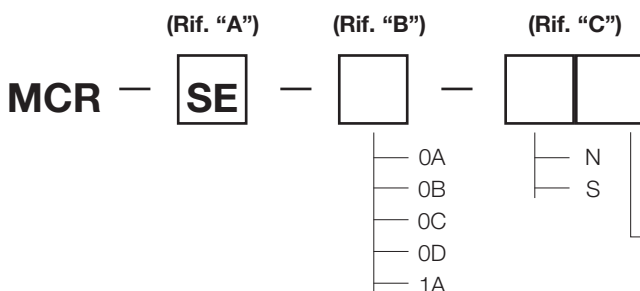


## Rif. "C"

Predisposizione per attacchi blocco "CETOP 3" Arranged for "CETOP 3 elements"	
N	Non sono presenti fori di fissaggio Without fixing holes
S	Sono presenti N. 2 fori M8 With N. 2 fixing holes



## Codice di ordinazione blocco centrale How to order the central manifold



Predisposizione blocco per motori Central manifold arranged for motors	
1	Motori in C.C. (vedi pag. 04) / D.C. motors (see pag. 04)
2	Motori in C.A. Tg. 63, 71 / A.C. motors Size 63, 71
3	Motori in C.A. Tg. 80, 90, 100 - 112 A.C. motors size 80, 90, 100 - 112
4	Tutti i motori in C.C. e C.A. Tg. 63, 71, 80, 90, 100, 112 All D.C. and C.A. motors Size 63, 71, 80, 90, 100, 112

# BLOCCO CENTRALE "SEMPLICE EFFETTO" CENTRAL MANIFOLD "SIMPLE EFFECT"

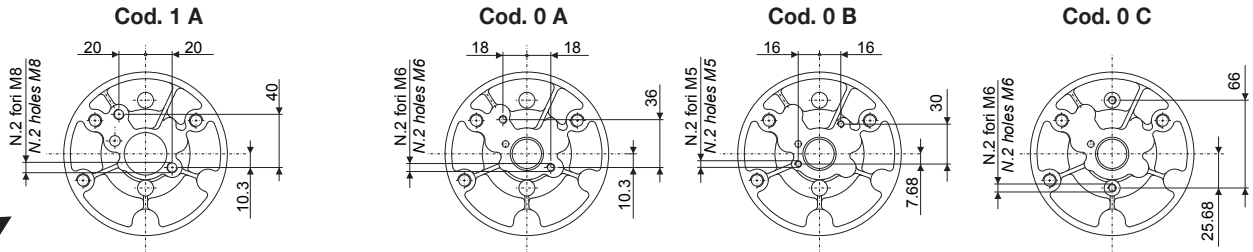


## Rif. "B"

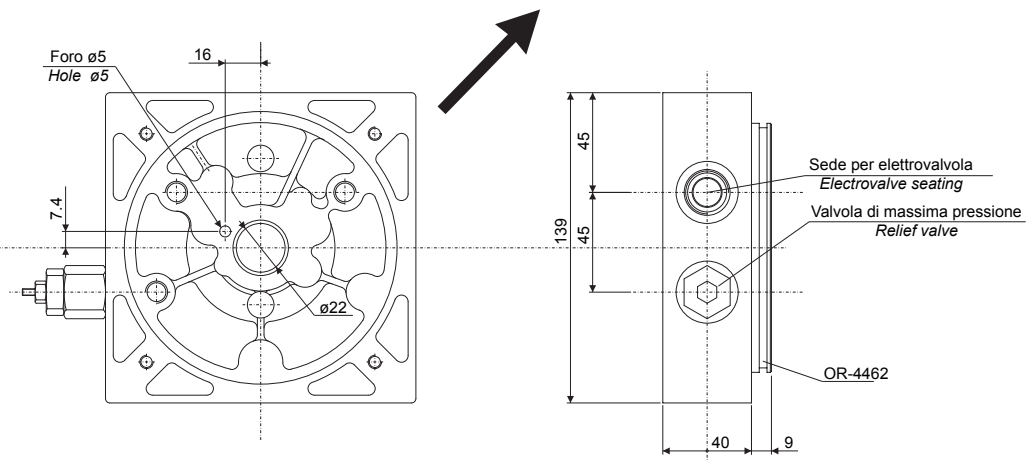
Blocchi predisposti per pompe a rotazione sinistra / Central manifold arranged for anticlockwise rotation pumps

Foratura per pompe gr. 1  
Drilling for pumps gr. 1

Forature per pompe gruppo 0,5 / Drilling for pumps group 0.5

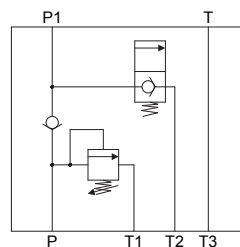


Cod. 0 D: Comprende tutte le forature del gruppo 0,5 / Including all group 0.5 drillings



## Rif. "A"

Semplice effetto  
Simple effect



Esempio codice completo  
Complete part number example

MCR — SE — 1A — N4

- Il blocco centrale viene fornito con la valvola di ritegno (MCR-VR14) e la guarnizione per il serbatoio (OR-4462).
- La valvola di max. va ordinata separatamente. (vedi pag. 06)
- La OMT non fornisce l'elettrovalvola.

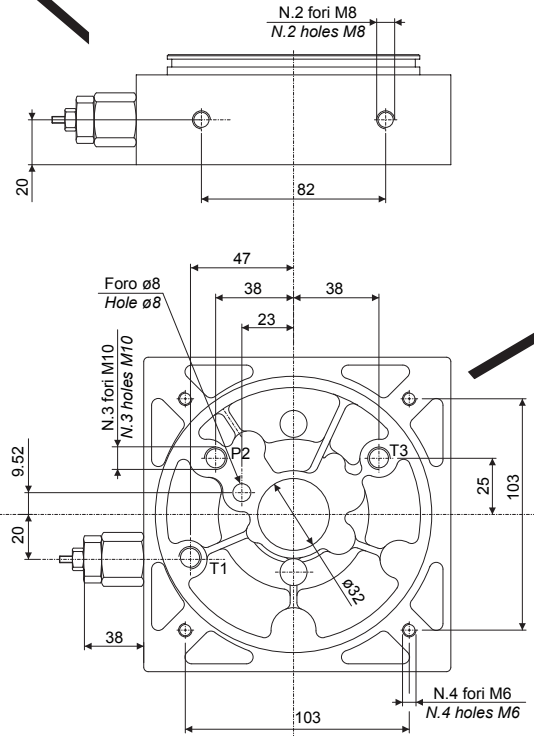
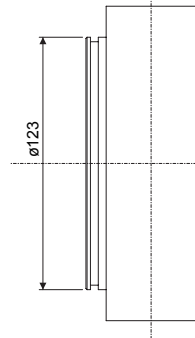
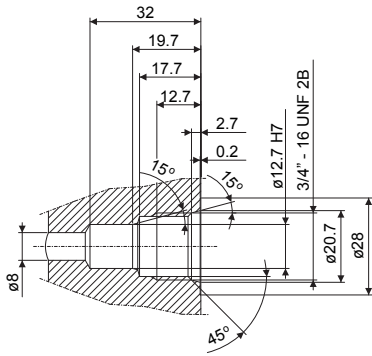
- The central manifold is always supplied with chek valve (MCR-VR14) and the tank gasket (OR-4462).
- To order the relief valve on pressure port and the hand pump. (see pag. 06)
- OMT doesn't supply electrovalves.

# BLOCCO CENTRALE DOPPO EFFETTO CENTRAL MANIFOLD "DOUBLE EFFECT"



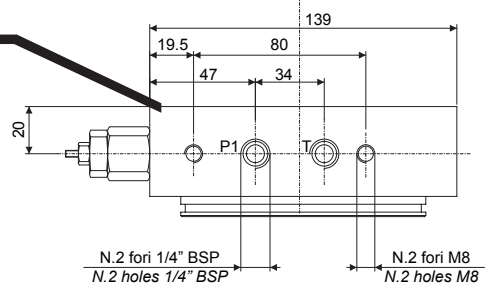
Codice valvola di massima Relief valve part-number	Taratura Setting
MCR-V1-F	20-130 Bar
MCR-V2-F	40-240 Bar

Sede valida per valvola di massima e pompa a mano  
Seating for relief valve and electric valve

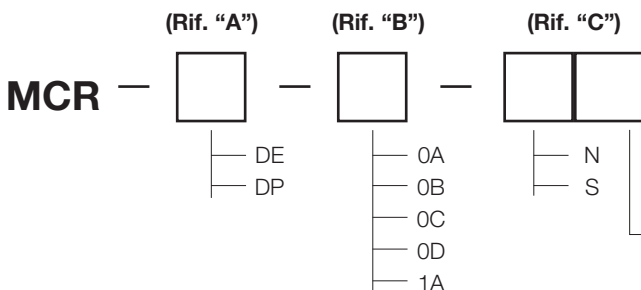


### Rif. "C"

Predisposizione per attacchi blocco "CETOP 3" Arranged for "CETOP 3 elements"	
N	Non sono presenti fori di fissaggio Without fixing holes
S	Sono presenti N. 2 fori M8 With N. 2 fixing holes



### Codice di ordinazione blocco centrale How to order the central manifold



- Predisposizione blocco per motori  
Central manifold arranged for motors**
- 1 Motori in C.C. (vedi pag. 04) / D.C. motors (see pag. 04)
  - 2 Motori in C.A. Tg. 63, 71 / A.C. motors Size 63, 71
  - 3 Motori in C.A. Tg. 80, 90, 100 - 112  
A.C. motors size 80, 90, 100 - 112
  - 4 Tutti i motori in C.C. e C.A. Tg. 63, 71, 80, 90, 100, 112  
All D.C. and C.A. motors Size 63, 71, 80, 90, 100, 112

# BLOCCO CENTRALE DOPPO EFFETTO CENTRAL MANIFOLD "DOUBLE EFFECT"

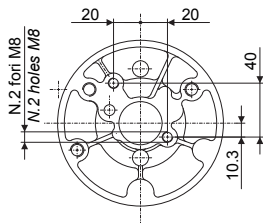


Rif. "B"

Blocchi predisposti per pompe a rotazione sinistra / Central manifold arranged for anticlockwise rotation pumps

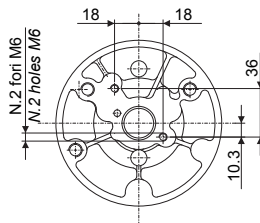
Foratura per pompe gr. 1  
Drilling for pumps gr. 1

Cod. 1 A

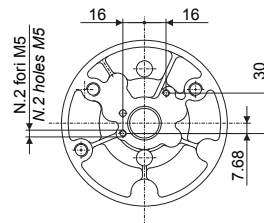


Forature per pompe gruppo 0,5 / Drilling for pumps group 0.5

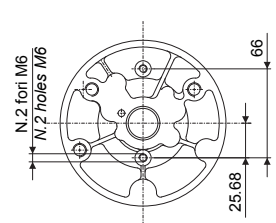
Cod. 0 A



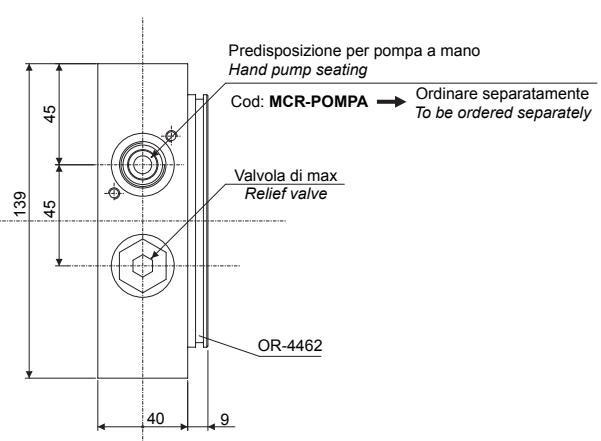
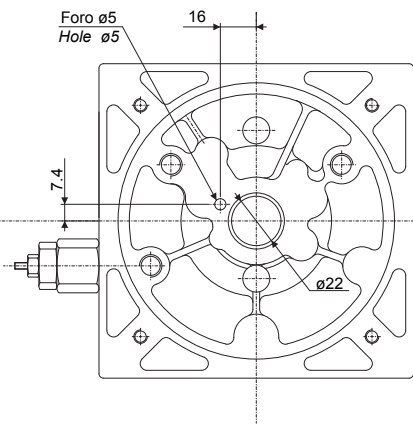
Cod. 0 B



Cod. 0 C



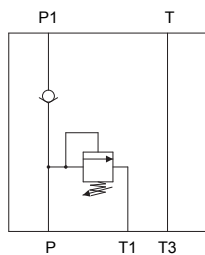
Cod. 0 D: Comprende tutte le forature del gruppo 0,5 / Including all group 0.5 drillings



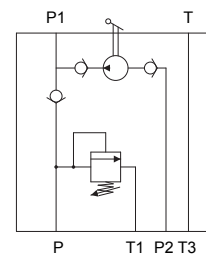
Rif. "A"

Schemi funzionali versione doppio effetto (DE), a doppio effetto con predisposizione per pompa a mano (DP)  
Functional layout double effect version and double effect arranged for hand pump

DE



DP



Esempio codice completo  
Complete part number example

MCR — **DE** — **0B** — **S1**

- Il blocco centrale viene fornito con la valvola di ritegno (MCR-VR14) e la guarnizione per il serbatoio (OR-4462).
- La valvola di max. e la pompa a mano vanno ordinati separatamente. (vedi pag. 08)

- The central manifold is always supplied with chek valve (MCR-VR14) and the tank gasket (OR-4462).
- To order the relief valve on pressure port and the hand pump. (see pag. 08)