

GENERAL INFORMATION

Document: HM-1-Dec 2012



Applications:

- Agricultural harvesters and seeders
- Conveyors
- Machine tools
- Food industries
- Turn equipment
- Brush drivers
- Sweepers and floor polishers
- Screw drivers
- and more

MGL motors are a light series in CAPRONI product line. MGL motors are characterized with a simple and reliable design due to a spool valve and a G-rotor. There is no more necessity of a drain line and check valves, because of the availability of a high pressure seal with a high efficiency.

MGL motors are a lighter and economical version of the standard G-rotor orbital motors, and they can replace the last in almost all their applications.

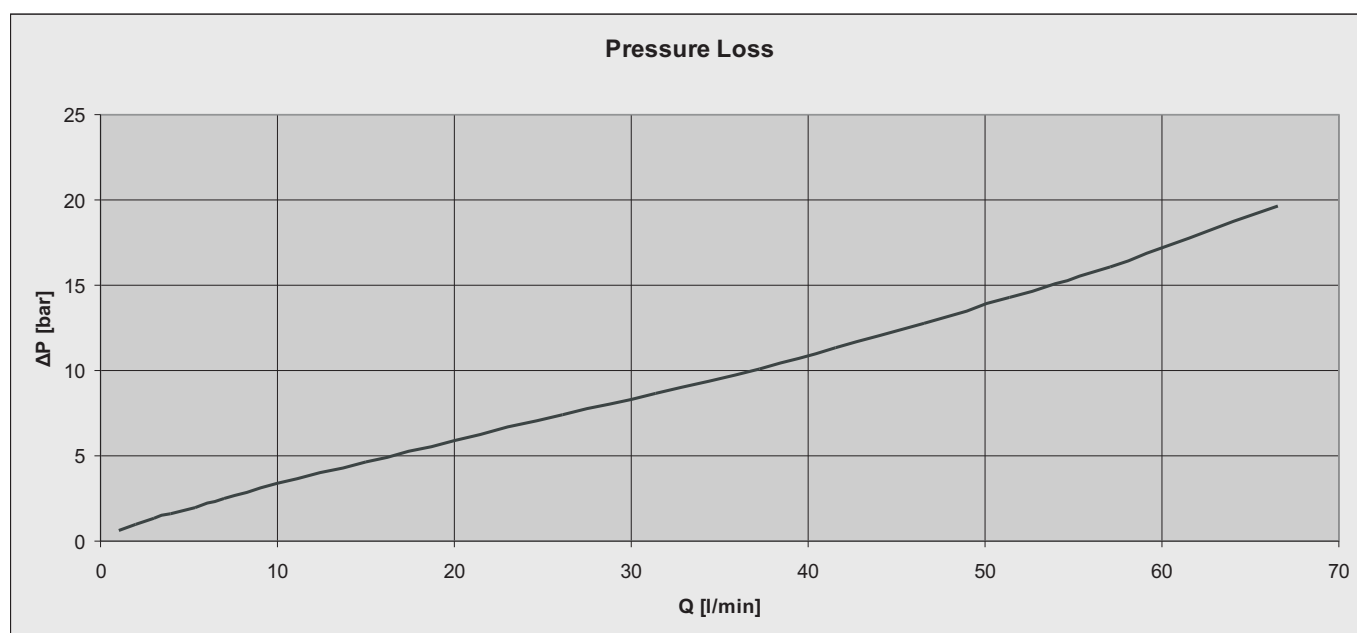
Displacement	[cm ³ /rev.]	50 ÷ 315
Maximum pressure	[bar]	140
Maximum oil flow	[lpm]	25 ÷ 60
Maximum speed	[RPM]	603
Maximum torque	[daNm]	7.4 ÷ 30.5
Minimum speed	[RPM]	10
Temperature range	[°C]	-30 ÷ 90
Viscosity range	[mm ² /s]	20 ÷ 75

PERFORMANCE DATA

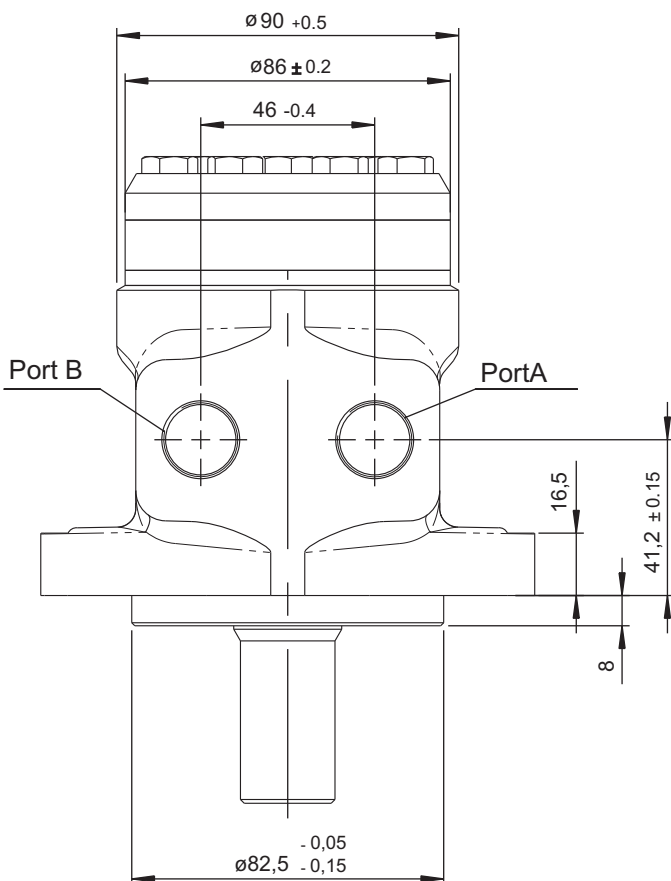
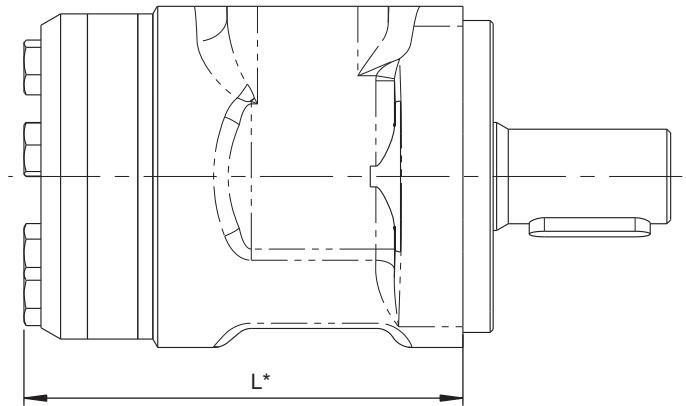
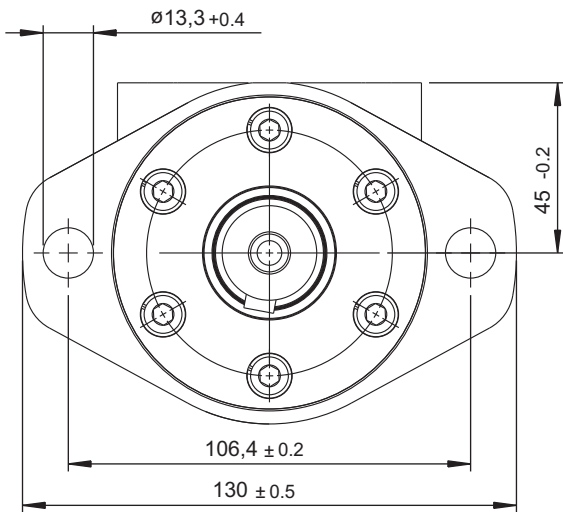
Type		MGL 50	MGL 80	MGL 100	MGL 125	MGL 160	MGL 200	MGL 250	MGL 315
Displacement [cm ³ /rev.]		49.7	79.2	101.2	122.8	159.3	200.8	249.7	314.6
Max. Speed	Cont.	790	480	490	390	300	240	230	190
	Int.*	990	615	590	470	360	290	270	220
Max. Torque [daNm]	Cont.	7,4	11	14,7	19,5	24,6	28	28,4	30,5
	Int.*	8,8	13,4	18,2	23,2	28,2	34	34,5	38,2
Max. Output [KW]	Cont.	5,4	5,4	7,4	7,6	7,6	6,9	6,7	5,9
	Int.*	7,3	8,9	11	11	10,4	10,1	9,6	8,6
Max. Oil Flow [l/min]	Cont.	40	40	50	50	50	50	60	60
	Int.*	50	50	60	60	60	60	70	70
Max. Pressure Drop [bar]	Cont.	140	140	140	140	140	115	105	90
	Int.*	175	175	175	175	175	150	120	110
	Peak**	200	200	200	200	200	200	175	150
Min. Speed [RPM]		10	10	10	10	10	10	10	10

* Intermittent duty must not exceed 10% of every minute

** Peak duty must not exceed 1% of every minute



MOUNTING

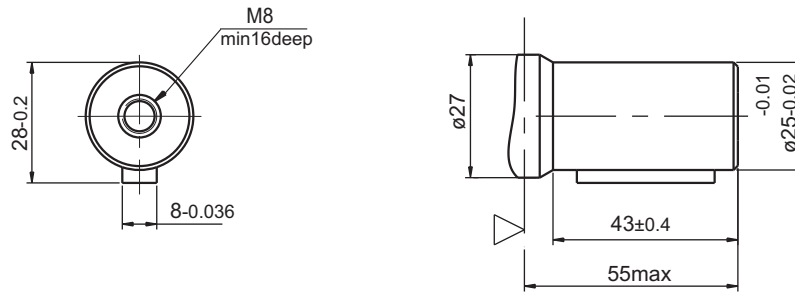


Type	L*	Weight [kg]
MGL 50 ...	109	5,1
MGL 80 ...	112	5,2
MGL 100 ...	116	5,34
MGL 125 ...	120	5,5
MGL 160 ...	125	5,66
MGL 200 ...	128	5,78
MGL 250 ...	135	6
MGL 315 ...	141	6,2

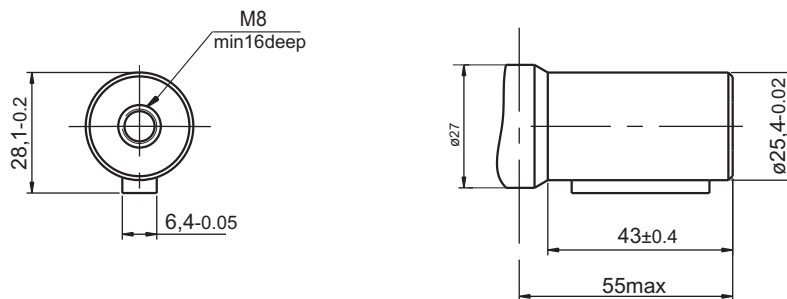
Port(A,B): 2xG1/2 or 2xM22x1,5 - 15mm depth

SHAFTS

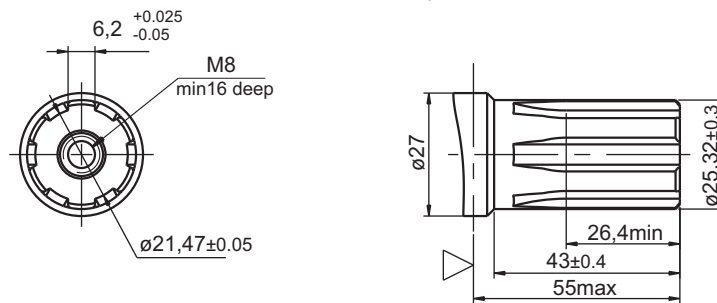
S - Parallel key A8x7x32 DIN 6885
Max. torque 34daNm



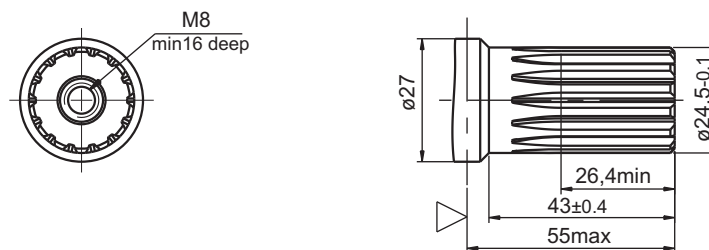
SC - Parallel key $\frac{1}{4} \times \frac{1}{4} \times 1 \frac{1}{4}$ BS46
Max. torque 34daNm



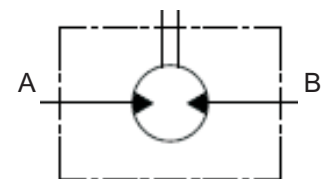
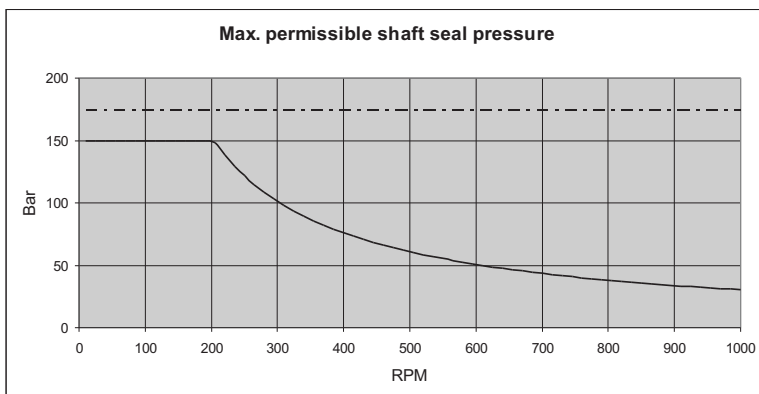
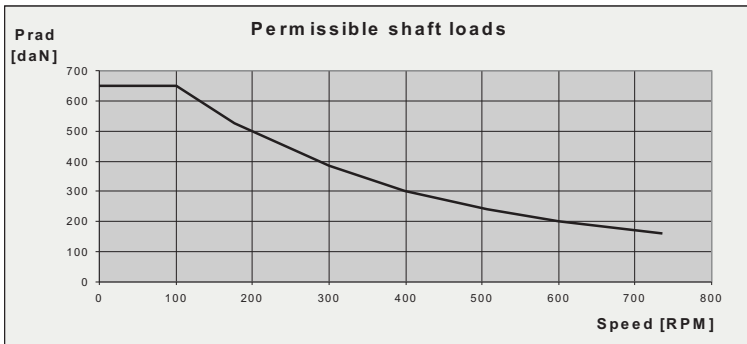
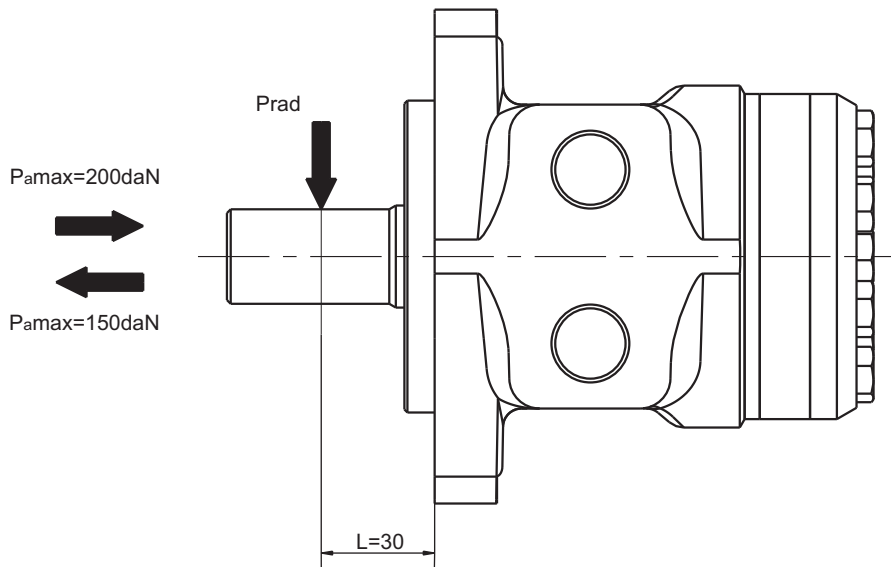
SB - Splined, BS2059, Deep splines1', Fit2
Max. torque 40daNm



SE - Splined DIN5482, B25x22 h9
Max. torque 40daNm



TECHNICAL DATA

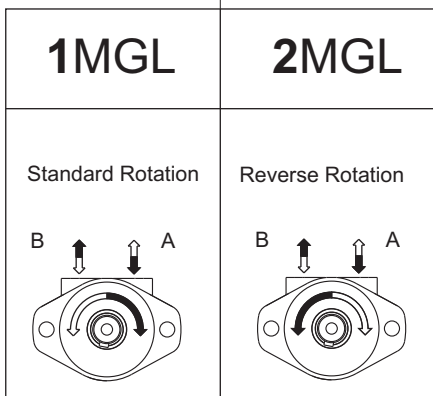


The shaft seal pressure equals the Port B pressure.

- Continuous range
- - - Intermittent range /max. 10% of every minute/

ORDERING CODE

MGL 1/P1



CODE	Ports
G	G1/2 BSPP
M	M22x1,5 Metric

Standard option

CODE	Displacement cm ³ /rev
50	49.7
80	79.2
100	101.2
125	122.8
160	159.3
200	200.8
250	249.7
315	314.6

CODE	Shafts
S	Ø25mm straight, Parallel key A8x7x32 DIN 6885
SC	Ø25,4mm straight, Parallel key 1/4" x 1/4" x 1 1/4" BS46
SB	Ø25,32 Splined, BS2059
SE	Ø24,5 Splined B25x22 h9, DIN5482