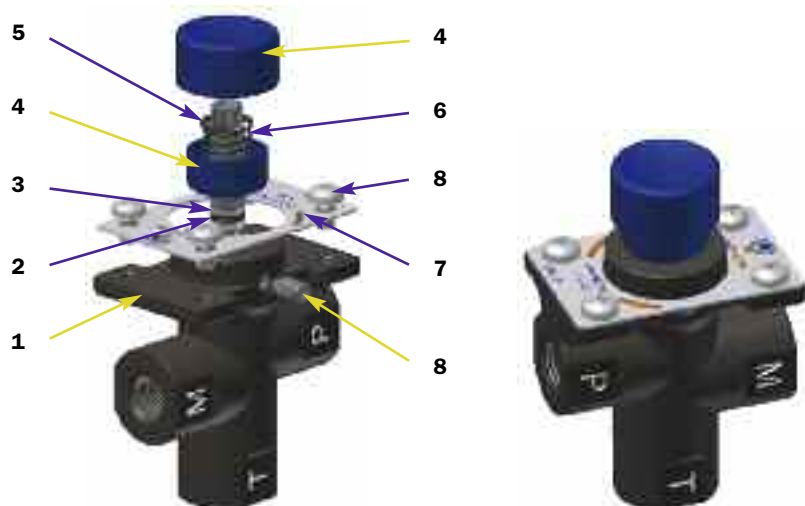


Series EM1 - B



EM1-B (Materials)

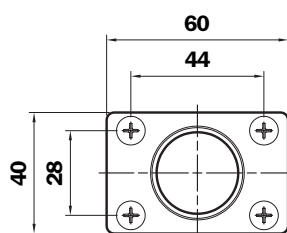
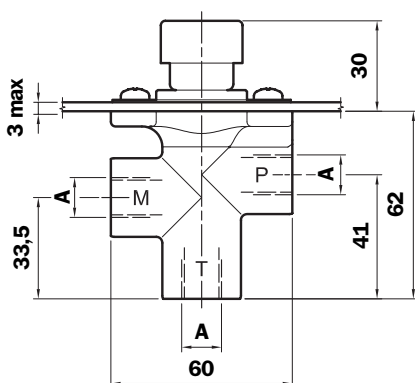
- 1 - Body: Cast Iron
- 2 - Pin: Steel
- 3 - Seals: NBR - FPM
- 4 - Knob/Cover: Nylon
- 5 - Stop ring: Steel
- 6 - Spring: Steel
- 7 - Nameplate: Aluminium
- 8 - Nut-Screw: Galvanised Steel

Weight

EM1-B: 0,440 Kg

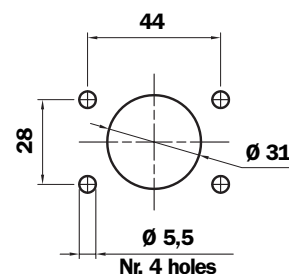
Instructions for using gauge isolators series: EM1 "B"

- 1**
Button not pressed: pressure gauge isolated.
- 2**
Button pressed: pressure gauge reading.
- 3**
Button pressed and turned (either to left or right): button remains in position and pressure gauge measures pressure continuously.
- 4**
To isolate the pressure gauge from pressure reading, turn the button until it returns to the not pressed position.



Dimensions

Mounting holes



Type	A
G1	G 1/4"
G2	1/4" NPT
G3	SAE 5 (1/2" 20 UNF)

Pressure gauge isolator EM1

Example: EM1

1	2	3	4
<input type="checkbox"/>	<input type="checkbox"/>	<input type="checkbox"/>	<input type="checkbox"/>
B	G1	A	P01

1 - Mounting type

B Panel mounting with screws

2 - Connections

G1	G 1/4"
G2	1/4" NPT
G3	SAE 5 (1/2" 20 UNF)

3 - Seal

A	NBR
V	FPM

4 - Options

P01	MP Filtri standard
------------	--------------------

Ordering information