



## Technical data

Damping rods are element to reduce the transmission of the vibrations and emission of noise generated of the system.

Damping rods are available for IEC Electric motors from size 71 to size 315L and for MP FILTRI foot bracket

### Compatibility with fluids

- Mineral oils types HH-LL-HM-HR-HV-HC, to ISO 6743/4 standard
- Water based emulsions types HFAE-HFAS, to ISO 6743/4 standard
- Water glycol type HFC, to ISO 6743/4 standard
- Ask for anodized version

### Materials

Plate: steel , black colour  
Damping element: NBR 60 Shore A

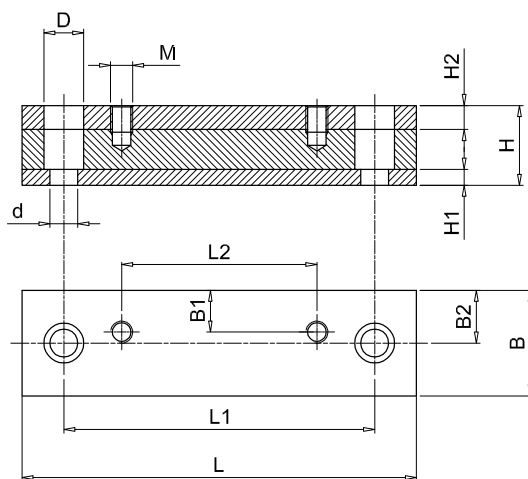
### Temperature

- From -20 °C to +80 °C

### Special Applications

Any applications not covered by the normal indications contained in this catalogue must be evaluated and approved by the MP Filtri Technical and Sales Department.

## Dimensions



Damping rods for foot brackets PDMA series.

For foot brackets see page 102

Code	Dimensions [mm]											Weights [kg]	
	L	L1	L2	B	B1	B2	H	H1	H2	D	d		M
<b>MPDR PDMA160</b>	196	156	80	50	21	25	40	8	12	20	14	M8	1.5
<b>MPDR PDMA200</b>	196	156	98	50	21	25	40	8	12	20	14	M10	1.5
<b>MPDR PDMA250</b>	240	205	130	50	24	25	40	8	12	20	14	M12	2.0
<b>MPDR PDMA300</b>	280	245	160	50	20	25	45	8	12	20	14	M12	2.5
<b>MPDR PDMA350</b>	446	400	279	70	35	35	60	15	15	26	14	M12	8.0

Damping rods for electrical motors UNEL-MEC

Code	Dimensions [mm]											Weights [kg]	
	L	L1	L2	B	B1	B2	H	H1	H2	D	d		M
<b>MPDR 71</b>	196	156	90	50	21	25	40	8	12	20	14	M6	1.5
<b>MPDR 80</b>	196	156	100	50	22	25	40	8	12	20	14	M8	1.7
<b>MPDR 90S</b>	196	156	100	50	24.5	25	40	8	12	20	14	M8	1.7
<b>MPDR 90L</b>	240	205	125	50	24	25	40	8	12	20	14	M8	2.0
<b>MPDR 100L</b>	240	205	140	50	22	25	40	8	12	20	14	M10	2.0
<b>MPDR 132S</b>	280	245	140	50	20	25	45	8	12	20	14	M10	2.5
<b>MPDR 132M</b>	280	245	178	50	20	25	45	8	12	20	14	M10	2.5
<b>MPDR 160M</b>	340	300	210	70	28	35	60	15	15	26	18	M12	6.0
<b>MPDR 160L</b>	416	370	254	70	28	35	60	15	15	26	18	M12	7.5
<b>MPDR 180M</b>	416	370	241	70	35	35	60	15	15	26	18	M12	7.5
<b>MPDR 180L</b>	446	400	279	70	35	35	60	15	15	26	18	M12	8.0
<b>MPDR 200L</b>	492	430	305	70	35	35	60	15	15	33	22	M16	8.9
<b>MPDR 225S</b>	492	430	286	70	35	35	60	15	15	33	22	M16	8.9
<b>MPDR 225M</b>	492	445	311	70	35	35	60	15	15	33	22	M16	8.9
<b>MPDR 250M</b>	492	445	349	100	50	50	60	15	15	33	22	M20	12.5
<b>MPDR 280S</b>	614	570	368	100	50	50	60	15	15	33	22	M20	15.1
<b>MPDR 280M</b>	614	570	419	100	50	50	60	15	15	33	22	M20	15.1
<b>MPDR 315S</b>	614	570	406	120	60	60	60	15	15	33	22	M24	26.5
<b>MPDR 315M</b>	614	570	457	120	60	60	60	15	15	33	22	M24	26.5
<b>MPDR 315L</b>	704	660	508	120	60	60	60	15	15	33	22	M24	29.2