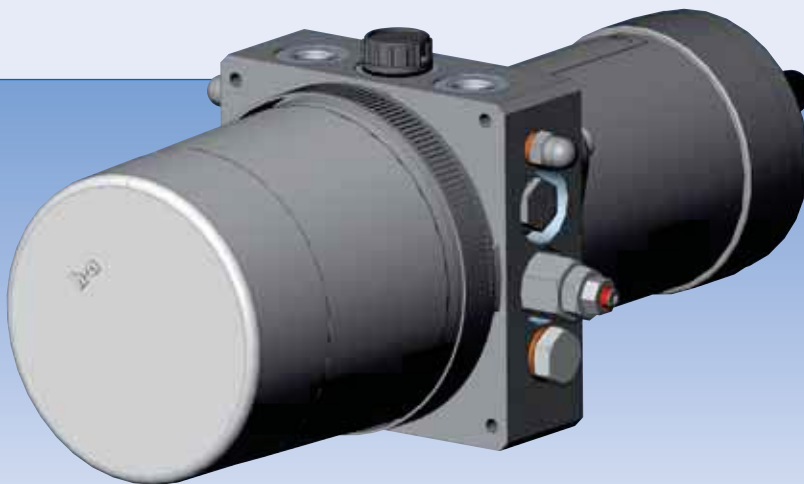


MW HYDRAULIC POWER UNIT

Technical Catalogue

March
2014





The company

Brevini Fluid Power was established in 2003 in Reggio Emilia where it has its head office.

Brevini Fluid Power manufactures hydraulic components and application packages: a very large range suited to several operational requirements and applications thanks to a strict interaction between mechanical, hydraulic and electronic components.

Brevini Fluid Power is among the top manufacturers in Italy and a major player in Europe and in the world.

International presence

Brevini Fluid Power operates internationally with 15 branches all over the world placed in major industrialized countries: Italy, France, Germany, English, Romania, Holland, Finland, China, India, Singapore and the United States. The network is constantly expanding by opening new branches in just a few years.

The branches are guided by managers that have an excellent knowledge of their own country.

The advantages this brings are evident:

- Reduced delivery times thanks to the branches warehouses;
- Easy customization of products and systems basing on the customer's needs, thanks to the competence and professional skills of the branches' own technical and servicing departments;
- Quick servicing;
- A ready sales staff at hand and closer to the customers, which ensures high flexibility plus experience.

The production facilities are located throughout Reggio Emilia, Ozano Emilia (BO), Noceto (PR), Novellara (RE), Yancheng (province of Jiangsu, China) which was inaugurated in 2009 and became operative since 2010.

Competitive Strategy

Innovation combined with the focus on customers is the strength of the Brevini Fluid Power "brand", born from the forty-year-long experiences of Aron, Hydr-App, SAM Hydraulik, Oleodinamica Reggiana, VPS Brevini and Brevini Hydraulics.

Brevini Fluid Power proposes itself as a "local hub", as it happened to BPE Electronics in 2008 and OT Oiltechnology in 2009, in order to create a new Made in Italy global player in the world of hydraulics, increasingly more integrated with electronics.

The purpose is still the development of a very large range of products forming together integrated packages able to meet various application needs. Our ten-year-long partnership relations with hundreds of customers all over the world are the best synthesis of Brevini Fluid Power's operational philosophy.

Sharing of know-how and several experiences have made Brevini Fluid Power a more global company, more incisive in international markets and closer to its customers.

Product lines

The product lines are numerous and well-structured aimed to cover every needs: a strong basis on which to develop the engineering of application packages and complete systems. The offer is improving in the direction of a solution supplier often developed in co-design with the customer, both for the mobile and industrial sector.

Hydr-App Product Line: Hydraulic power packs and mini hydraulic packs (whether standard or customised), cartridge valves and solenoid valves, gear boxes and transmission components.

S.A.M. Hydraulik Product Line: Axial piston pumps and motors for medium and high pressure, orbital motors.

Aron Product Line: Cetop directional, flow rate and pressure control valves, on/off and proportional valves. Modular and cartridge valves, subplates and blocks, bankable valves.

Brevini Hydraulics Product Line: Proportional directional valves, joysticks and electronic modules.

BPE Electronics Product Line: Sensors, load cells, boards and electronic controls via CAN, display units, planarity indicators.

VPS Brevini Product Line: Mono-block and modular mobile valves.

OT Oiltechnology Product Line: Gear pumps and motors, flow dividers.



© 2014 Brevini Fluid Power S.p.A. All rights reserved. Hydr-App, SAM Hydraulik, Aron, Brevini Hydraulics, BPE Electronics, VPS Brevini, OT Oiltechnology, logos are trademarks or are registered trademarks of Brevini Fluid Power S.p.A. or other companies of the Brevini Group in Italy and other countries.

The technical features supplied in this catalogue are non binding and no legal action can be taken against such material. Brevini Fluid Power will not be held responsible for information and specifications which may lead to error or incorrect interpretations. Given the continuous technical research aimed at improved technical features of our products, Brevini Fluid Power reserves the right to make change that are considered appropriate without any prior notice. This catalogue cannot be reproduced (in whole or in part) without the prior written consent of Brevini Fluid Power. This catalogue supersedes all previous ones.

Use of the products in this catalogue must comply with the operating limits given in the technical specifications. The type of application and operating conditions must be assessed as normal or in malfunction in order to avoid endangering the safety of people and/or items.

General terms and conditions of sale: see website www.brevinifluidpower.com.

The products shown on this catalog are parts of line.

MW HYDRAULIC POWER UNIT

ORDERING CODE

MW* - A* / A* - P* - M** - T** - F*

Hydraulic power unit type		Page
MW	Standard	2
MW1	With cylinder differential volume drain and manual override	3
MW2	With cylinder differential volume drain	4

A	Pressure relief valve on P1 (screw adjustment)
----------	---

Setting range		Page
A	25 ÷ 80 bar	2
B	75 ÷ 220 bar	
C	5 ÷ 30 bar	

A	Pressure relief valve on P2 (screw adjustment)
----------	---

Setting range		Page
A	25 ÷ 80 bar	2
B	75 ÷ 220 bar	
C	5 ÷ 30 bar	

P	Reverse pump PHV 0.5
----------	----------------------

Nominal displacement		Page
A	0.25 cc/rev	5
B	0.45 cc/rev	
C	0.56 cc/rev	
D	0.75 cc/rev	
J	0.92 cc/rev	
Z	1.26 cc/rev	

Mounting type		Page
0	Verticale without tank	11 12 13 14
1	Horizontal	
2	Vertical	
3		
4		
5		

F	Mounting position tank
----------	------------------------

Tank type		Page
K05	0.5 liters	11 12 12 13 13
K1	1 liter	
H1	1 liter	
Q1	1 liter	
Q2	2 liters	
01	1 liter	14
02	2 liters	
03	3 liters	
05	5 liters	
06	6 liters	
08	8 liters	

T	Tank
----------	------

0-5-6-7-8	Mounting position motors	Pages 8-6-10
------------------	--------------------------	--------------

DC motors		Page	AC motors		Page
GA	12V CC - 0.35 kW	6	R	Size 63	10
GB	24V CC - 0.40 kW	6	L	Size 71	10
HF	12V CC - 0.50 kW	7	M	Size 80	10
HE	24V CC - 0.50 kW	7			
GC	12V CC - 0.70 kW	8			
GD	24V CC - 0.80 kW	8			
GU	12V CC - 0.80 kW	9			
GZ	24V CC - 0.80 kW	9			

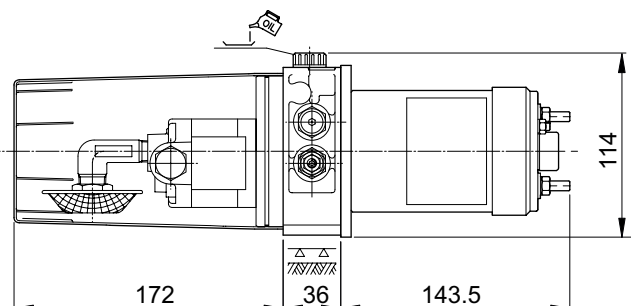
M	DC/AC motors
----------	--------------

ORDERING CODE EXAMPLE

MW- AA/AA- PB- MGB5- TK1-F1

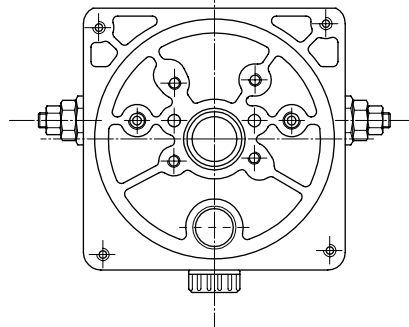
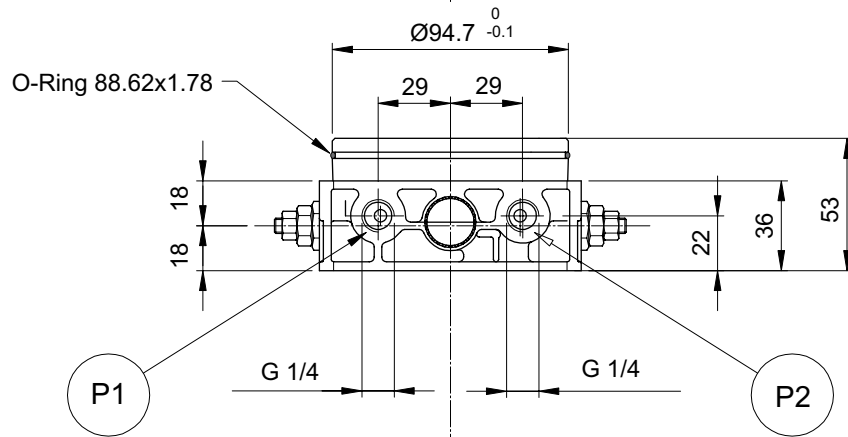
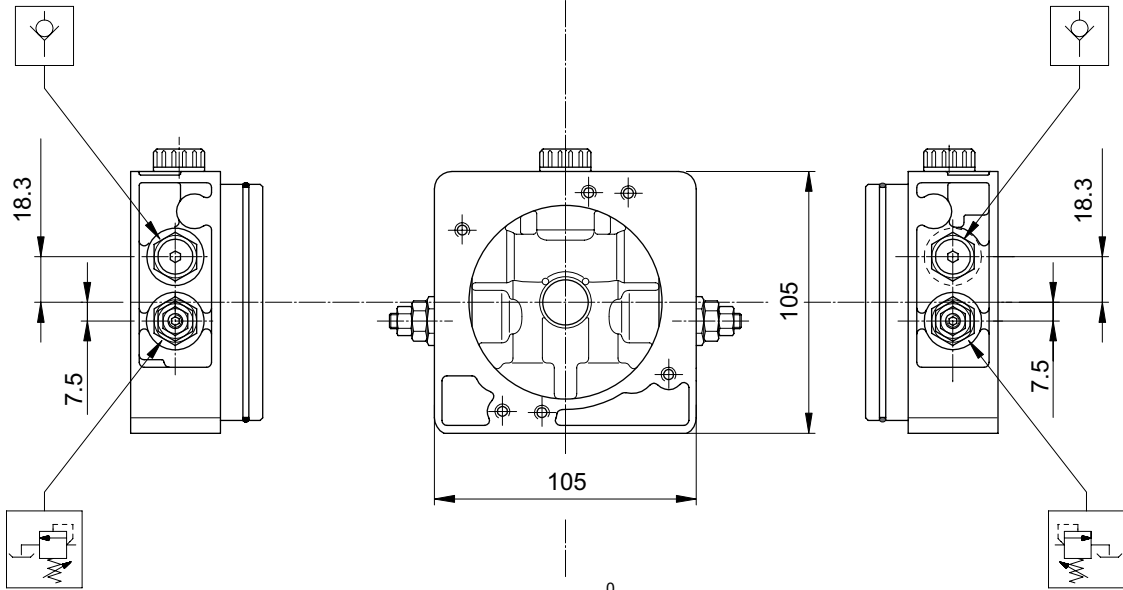
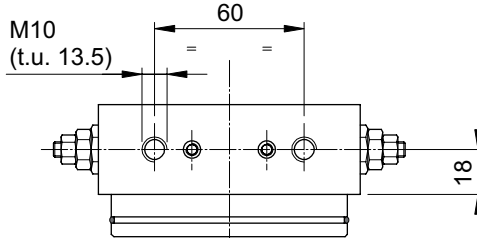
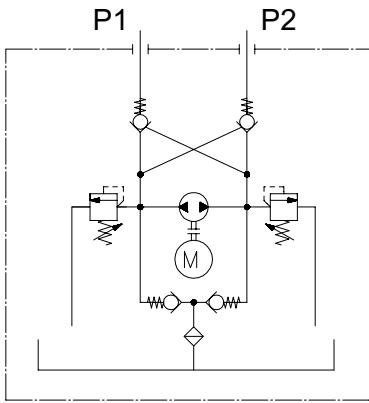
Hydraulic power unit type MW reversible type, with pressure relief valve on P1, setting 25 to 80 bar with adjustable screw, pressure relief valve on P2 setting 25 to 80 bar with adjustable screw, pump a 0.45 cc/rev, DC motor 24 Volt 0.4 kW in standard mounting position, standard 1-liter fuel tank mounted horizontally.

STANDARD VERSION OVERALL DIMENSIONS



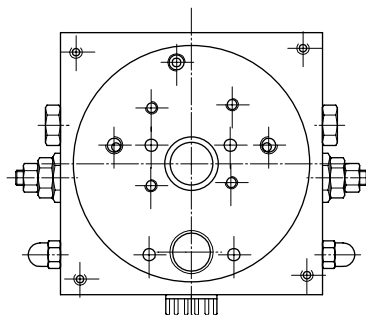
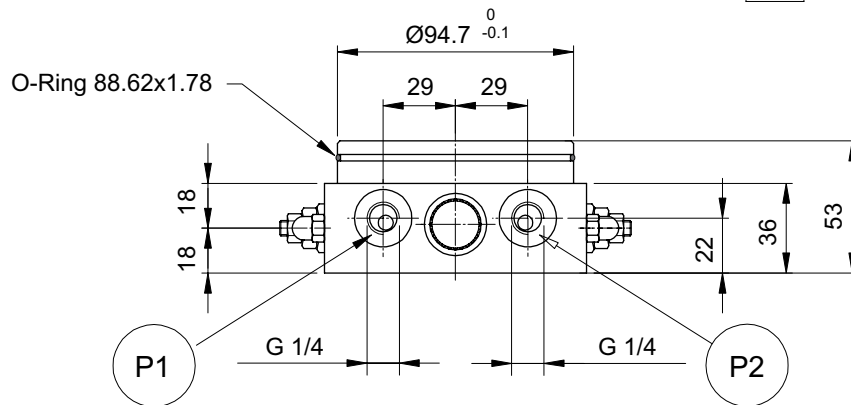
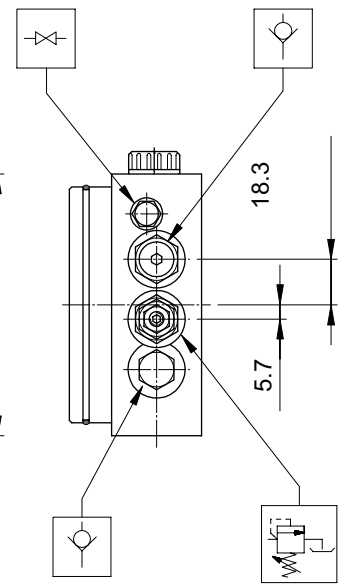
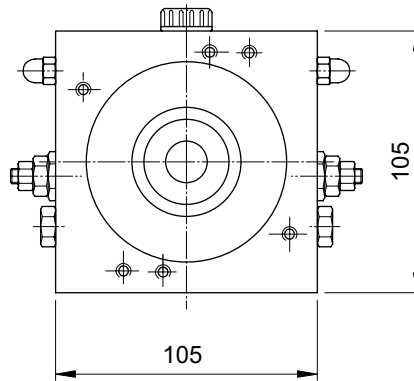
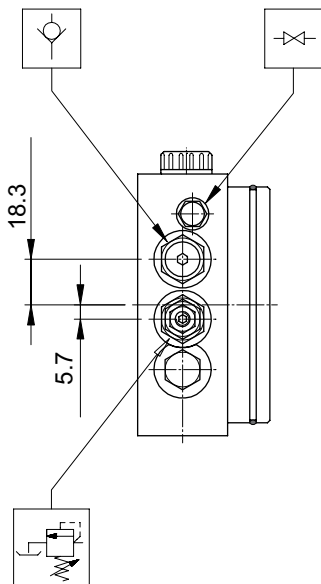
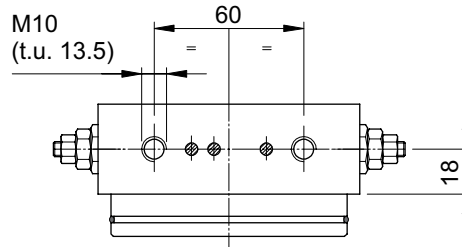
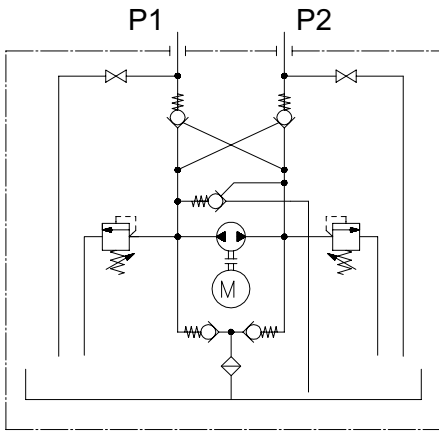
MW HYDRAULIC POWER UNIT

STANDARD VERSION



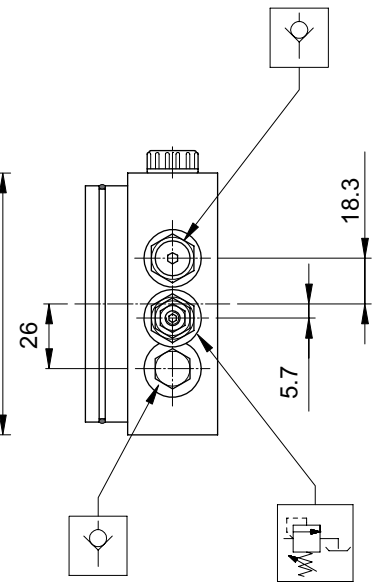
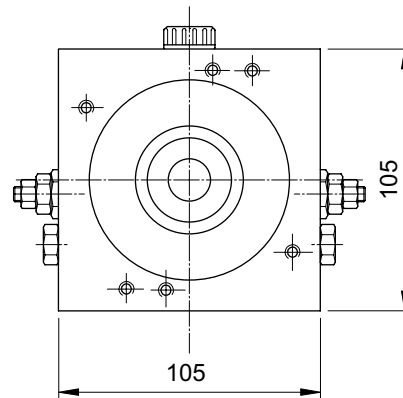
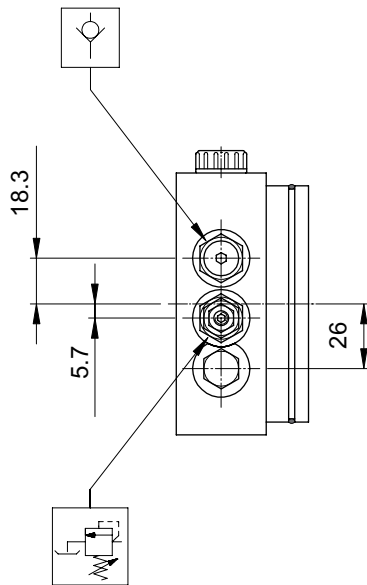
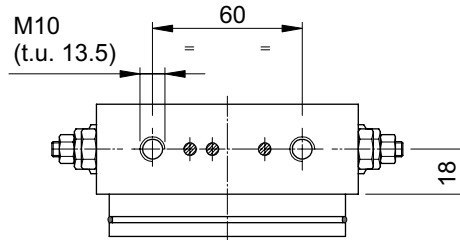
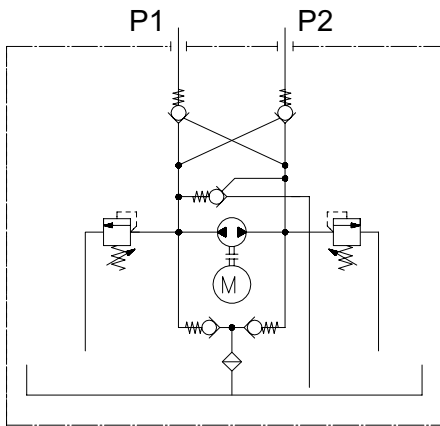
MW1 HYDRAULIC POWER UNIT

WITH CYLINDER DIFFERENTIAL VOLUME DRAIN AND MANUAL OVERRIDE

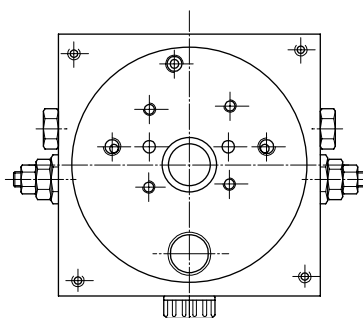
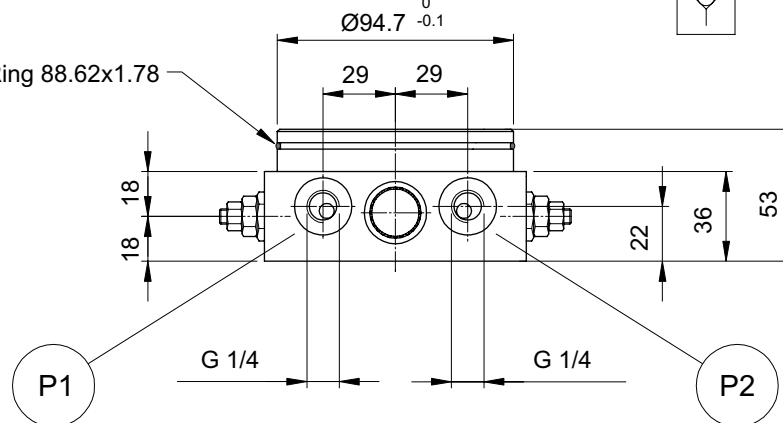


MW2 HYDRAULIC POWER UNIT

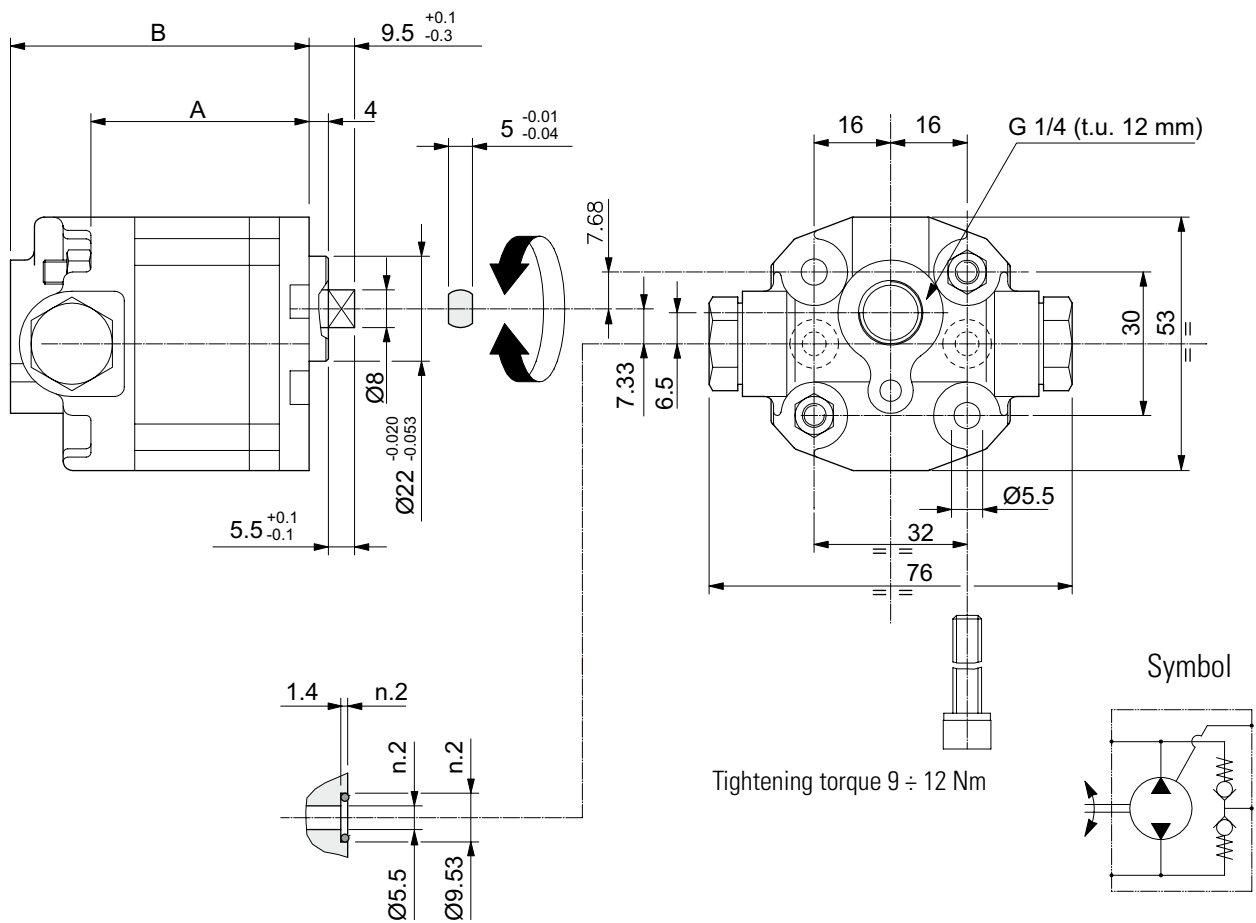
WITH CYLINDER DIFFERENTIAL VOLUME DRAIN



O-Ring 88.62x1.78

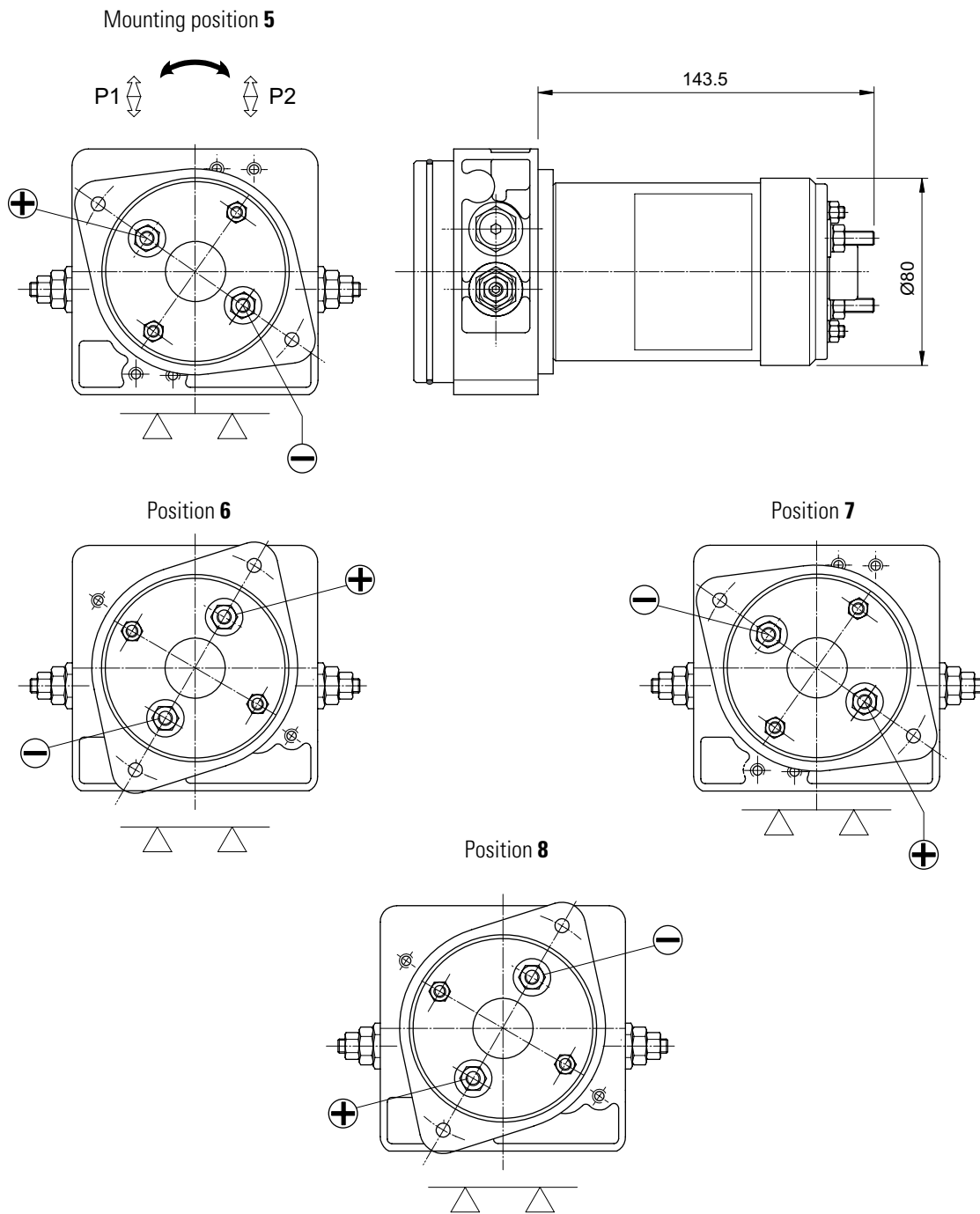


PUMP PHV 0.5 OVERALL DIMENSIONS



Code	Nominal displacement (cc/rev)	A (mm)	B (mm)	Pump code	Pump Kit code	Max working pressure (bar)	Dynamic pressure (bar)	Max RPM (rpm)	RPM at max pressure (rpm)
A	0.256	45.5	62.5	23006700.002	17050062.002	150	170	4000	1500
B	0.500	53.5	70.5	23006800.002	17050063.002	150	170	4000	1500
C	0.625	54.5	71.5	23006900.002	17050064.002	150	170	4000	1500
D	0.750	55.5	72.5	23007000.002	17050065.002	150	170	3000	1500
J	0.875	56.5	73.5	23008800.002	17050066.002	150	170	2500	1500
Z	1.250	59.5	76.5	23007100.002	17050067.002	140	160	1800	1400

12VDC 0.35 KW / 24VDC 0.40 KW MOTORS



For more details, features and performances DC motors, see catalog Brevini Fluid Power cod. DOC00053.

ORDERING CODE

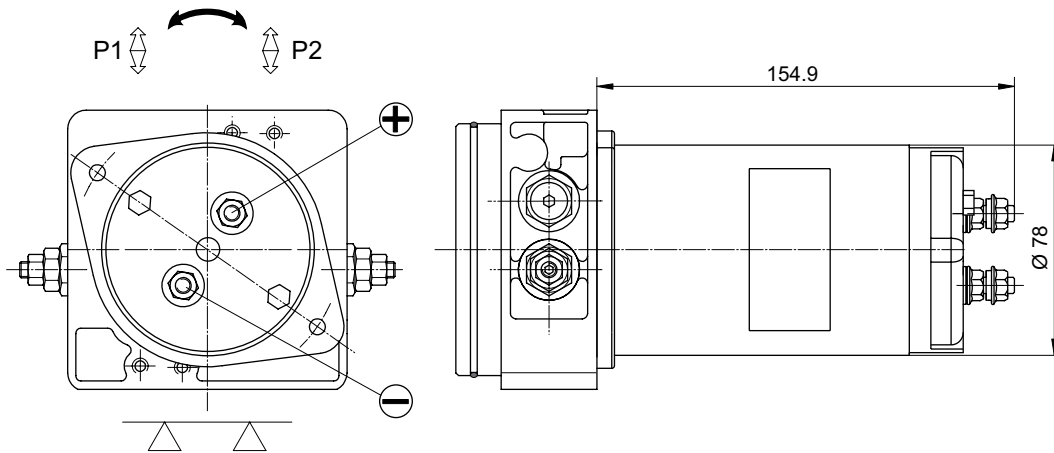
M	**	*	Code	Description	Motor
	GA		12VDC motor - 0.35 kW	25021400	
	GB		24VDC motor - 0.40 kW	25021500	

M	**	*	Code	Mounting position
	5		Position 5	
	6		Position 6	
	7		Position 7	
	8		Position 8	

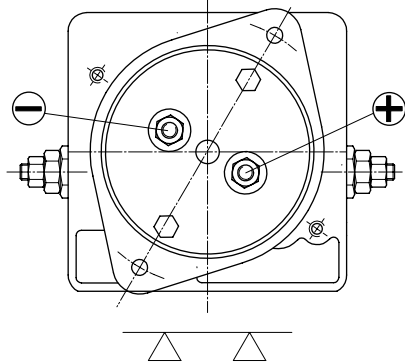
- DC motors permanent magnet
- Rotation CCW-CW
- Protection class IP54
- Insulation class F

12VDC 0.50 KW / 24VDC 0.50 KW MOTORS

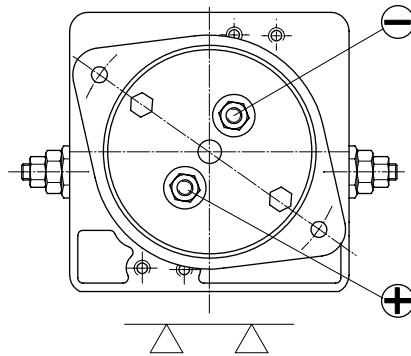
Mounting position 5



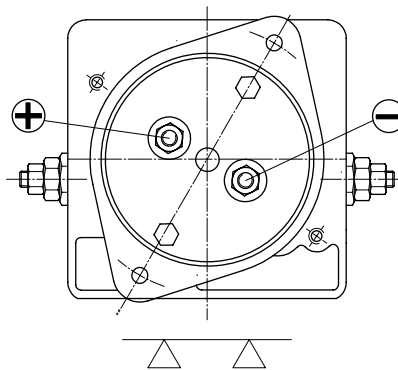
Position 6



Position 7



Position 8



For more details, features and performances DC motors, see catalog Brevini Fluid Power cod. DOC00053.

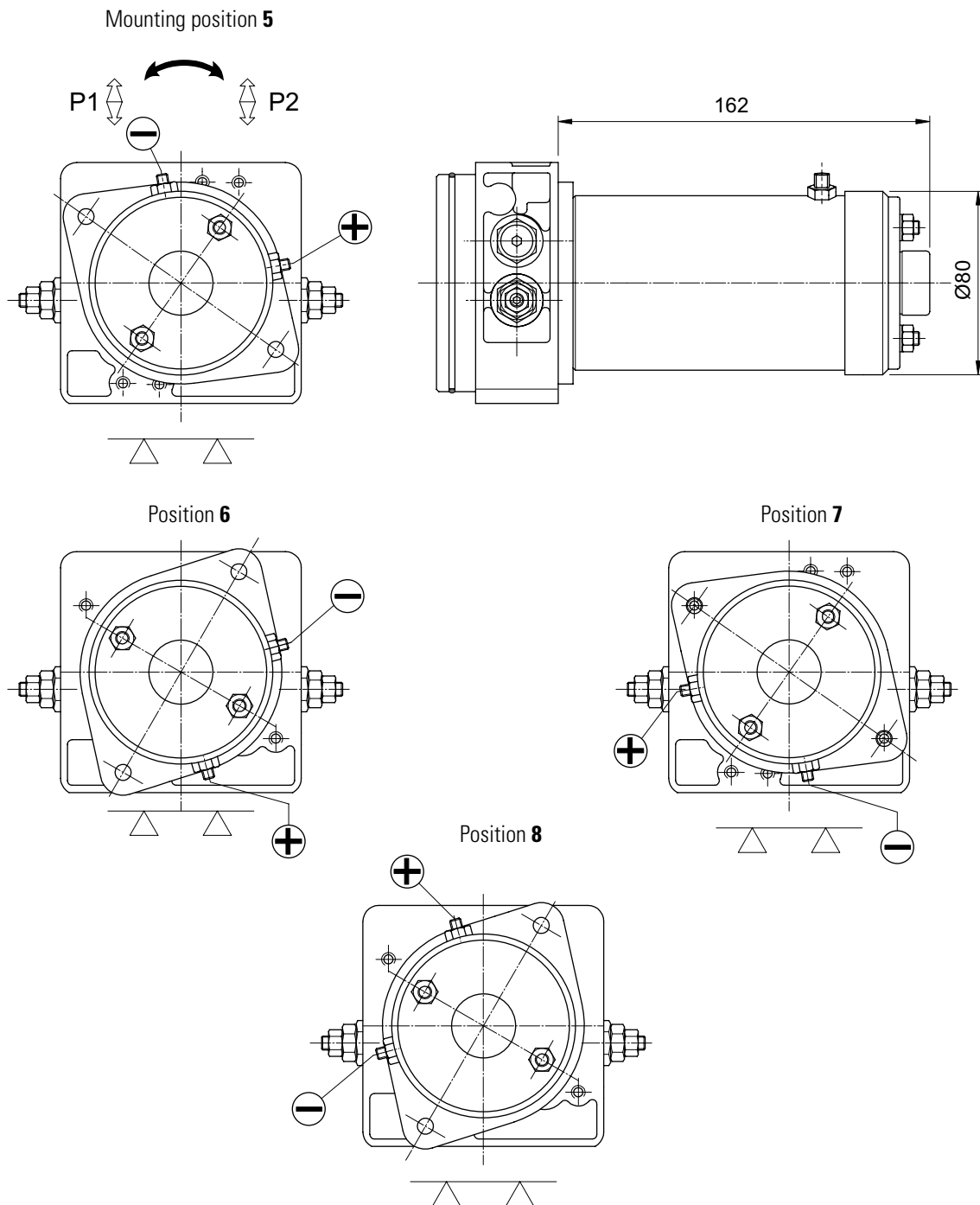
ORDERING CODE

M	**	*	Code	Description	Motor
			HF	Motor 12VDC - 0.50 kW	25024200
			HE	Motor 24VDC - 0.50 kW	25024300

M	**	*	Code	Mounting position
			5	Position 5
			6	Position 6
			7	Position 7
			8	Position 8

- DC motors permanent magnet
- Rotation CCW-CW
- Protection class IP54
- Insulation class F

12VDC 0,7 KW / 24VDC 0,8 KW MOTORS



For more details, features and performances DC motors, see catalog Brevini Fluid Power cod. DOC00053.

ORDERING CODE

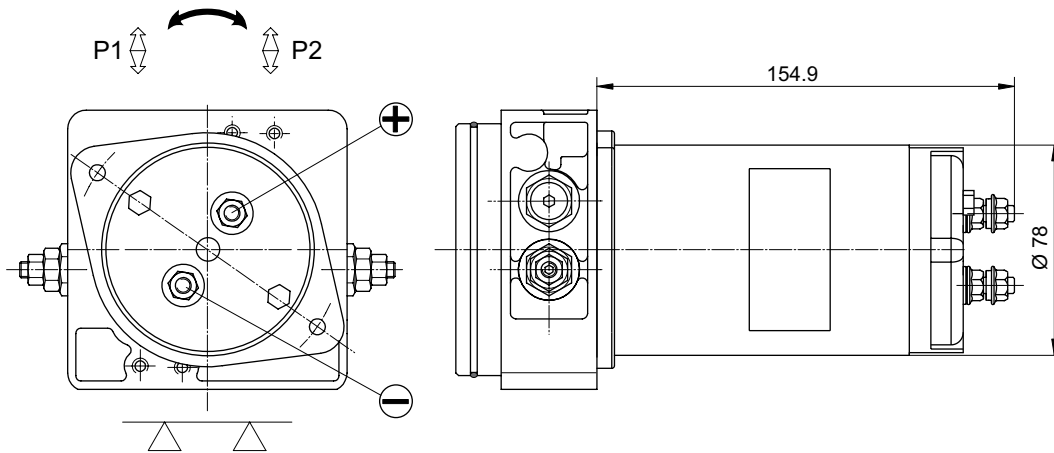
M	**	*	Code	Description	Motor
			GC	12VDC motor - 0.7 kW	25021600
			GD	24VDC motor - 0.8 kW	25021700

M	**	*	Code	Mounting position
			5	Position 5
			6	Position 6
			7	Position 7
			8	Position 8

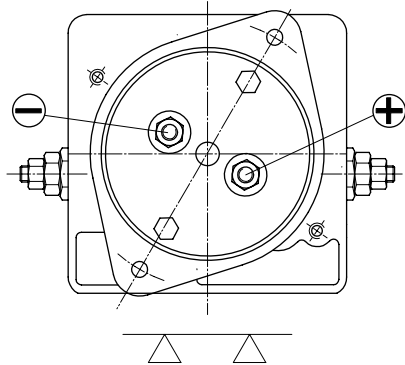
- DC motors permanent magnet
- Rotation CCW-CW
- Protection class IP54
- Insulation class F

12VDC 0.80 KW / 24VDC 0.80 KW MOTORS

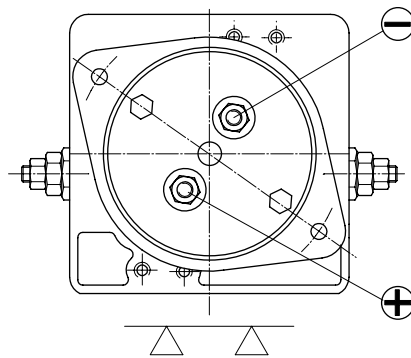
Mounting position 5



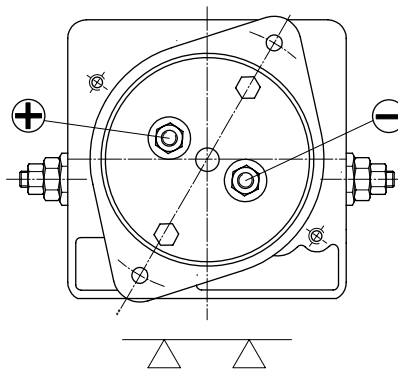
Position 6



Position 7



Position 8



For more details, features and performances DC motors, see catalog Brevini Fluid Power cod. DOC00053.

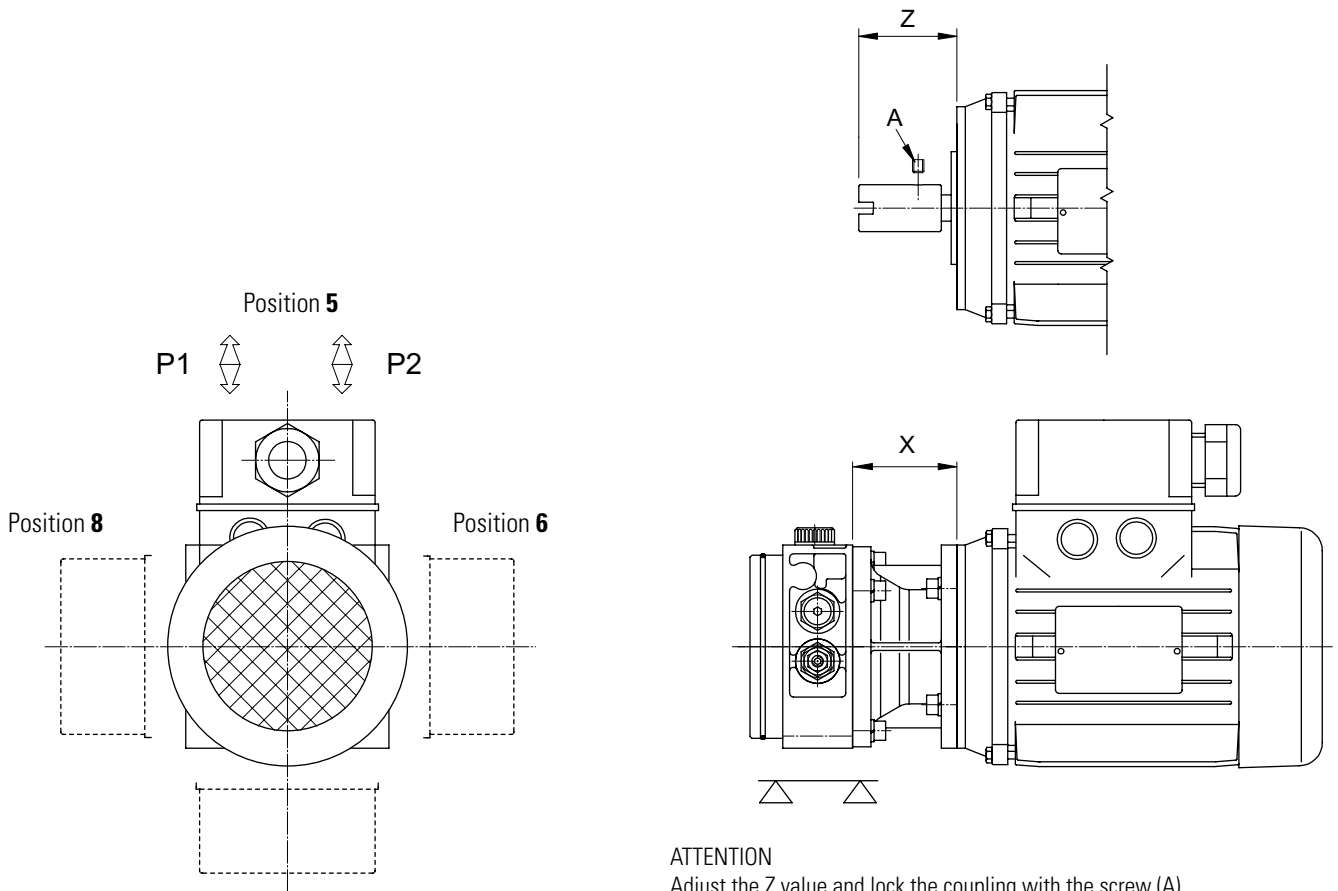
ORDERING CODE

M	**	*	Code	Description	Motor
			GU	Motor 12VDC - 0.80 kW	25021800
			GZ	Motor 24VDC - 0.80 kW	25021900

M	**	*	Code	Mounting position
			5	Position 5
			6	Position 6
			7	Position 7
			8	Position 8

- DC motors permanent magnet
- Rotation CCW-CW
- Protection class IP54
- Insulation class F

AC MOTOR - FRAME B14



ATTENTION

Adjust the Z value and lock the coupling with the screw (A).

- After the electrical connection, check the rotation direction for max 1 second (pump discharge), you will avoid irreparable damage to the pump.

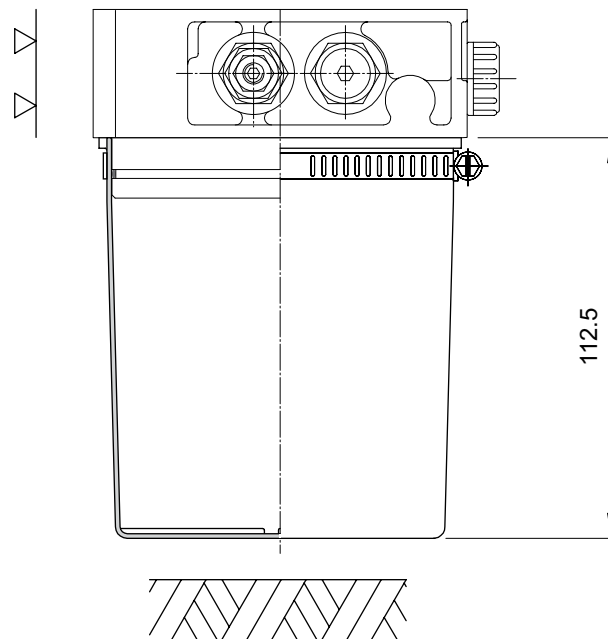
Code	Size	kW (2 poles)	kW (4 poles)	kW (6 poles)	Z (mm)	X (mm)	Frame
R	63	0.18 ÷ 0.25	0.12 ÷ 0.18	0.09 ÷ 0.12	42.8	54.7	B14
L	71	0.35 ÷ 0.55	0.25 ÷ 0.37	0.18 ÷ 0.25	42	53.9	
M	80	0.75 ÷ 1.10	0.55 ÷ 0.75	0.37 ÷ 0.55	53	54.7	

ORDERING CODE

M	*	*	Code	Description	Motor kit
			R	Motore taglia 63	KIT02008.001
			L	Motore taglia 71	KIT02008.002
			M	Motore taglia 80	KIT02008.003

M	**	*	Code	Mounting position
			0	Without motor
			5	Position 5
			6	Position 6
			7	Position 7
			8	Position 8

NYLON TANK TK05

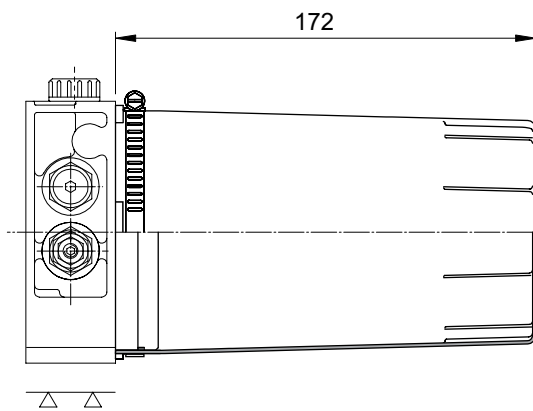


ORDERING CODE

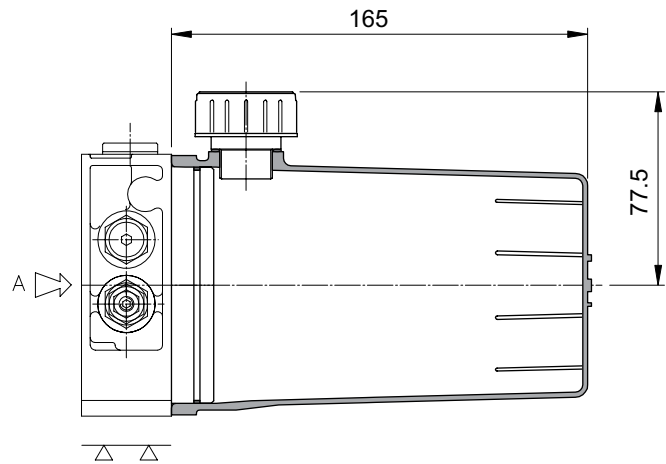
T	K05 *	Code	Capacity (nominal lt.)	Tank type	Tank kit	F	*	Code	Mounting position
		K05	0.5	Nylon (visual oil level)	90310177			02	Vertical

NYLON TANK TK1 - TH1

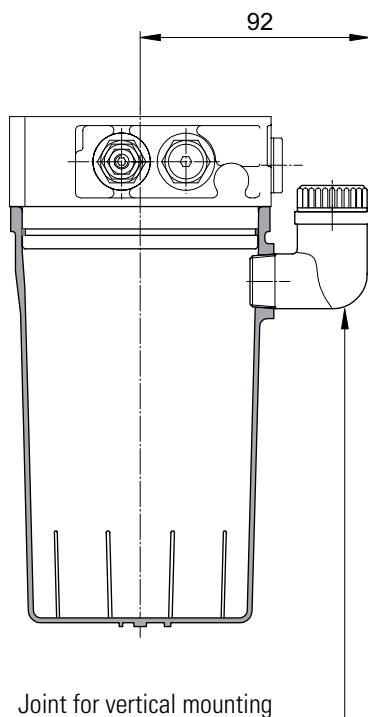
Tank **TK1** (horizontal)



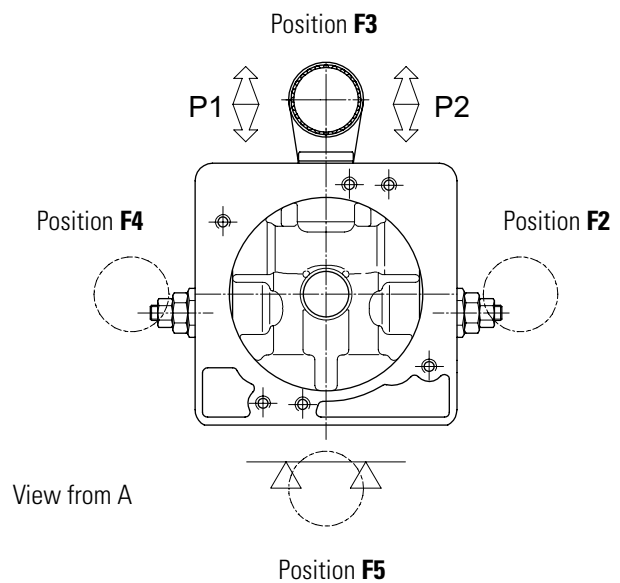
Tank **TH1** (horizontal)



Tank **TH1** (vertical)



Mounting position

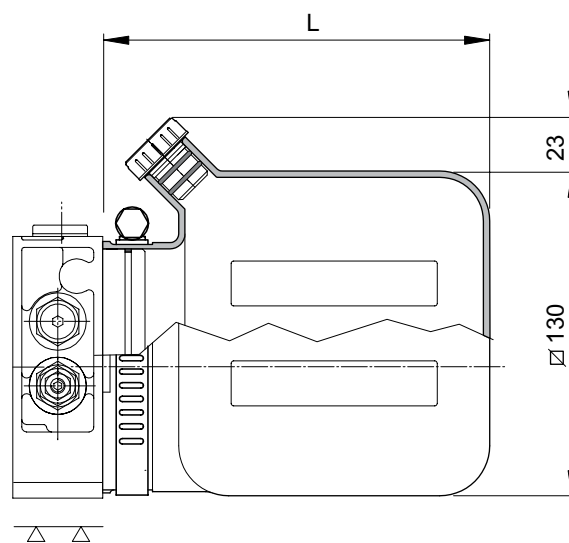


ORDERING CODE

T	*	*	Code	Capacity (nominal lt.)	Tank type	Tank kit
			K1	1	Nylon (visual oil level)	90310104
			H1	1	Nylon tank reinforced with fiberglass (visual oil level)	90310065 Horizontal
						90310066 Vertical

F	*	Code	Type	Mounting position	
			TK1	TH1	
		0	X	—	Vertical without tank
		1	X	X	Horizontal
		2	X	X	Vertical (referred to the filling cap)
		3	—	X	
		4	—	X	
		5	—	X	

NYLON TANK Q1 - Q2



ORDERING CODE

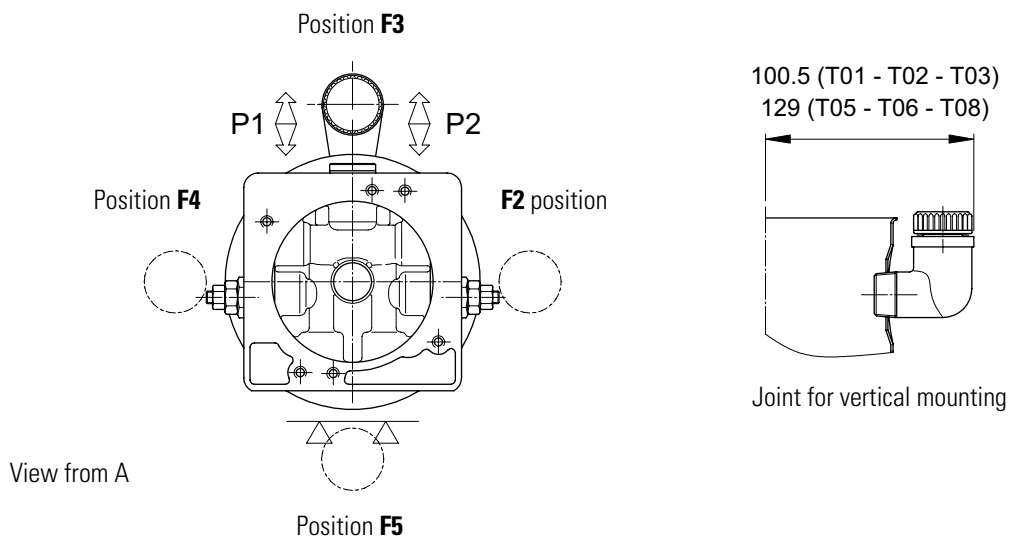
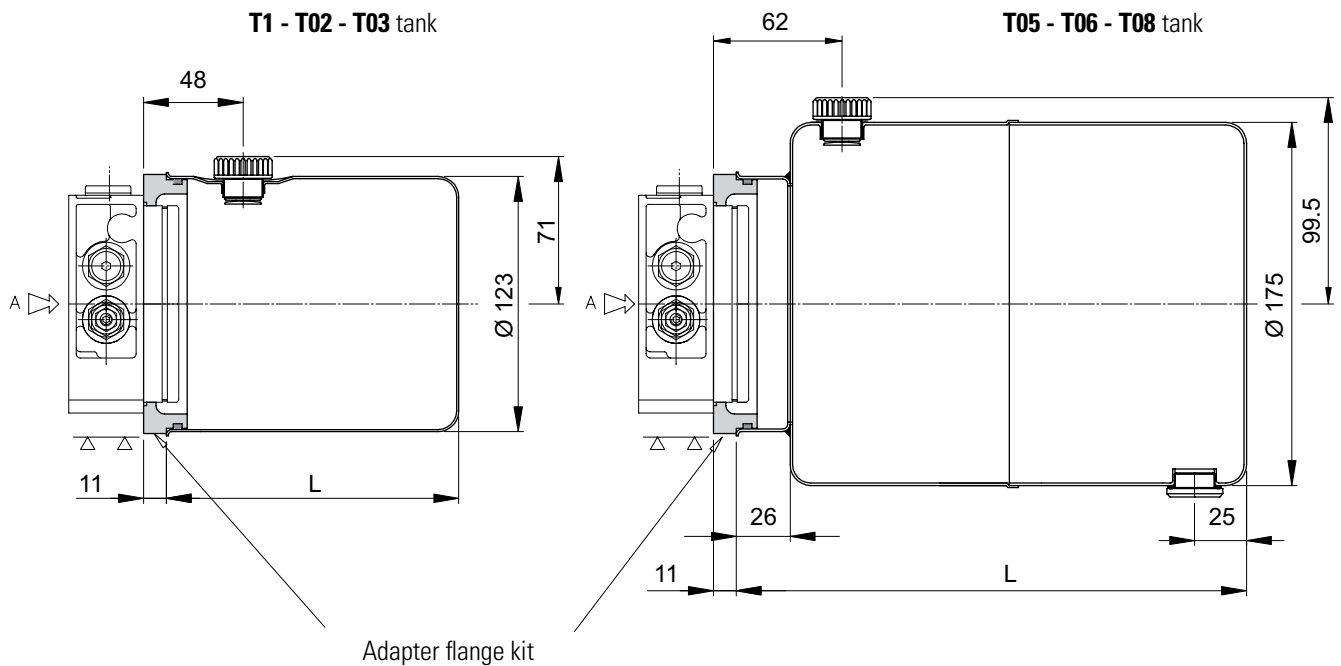
T	*	*
---	---	---

Code	Capacity (nominal lt.)	Tank type	L (mm)	Tank kit
Q1	1	In nylon (livello olio visivo)	155	90310278
Q2	2	In nylon (livello olio visivo)	223	90310279

F	*
---	---

Code	Mounting position
01	Horizontal

STEEL TANKS T01 - T02 - T03 - T05 - T06 - T08



ORDERING CODE

T	*	*	Code	Capacity (nominal lt.)	Tank type	L (mm)	Tank kit		Flange kit
							horizontal	vertical	
			01	1	Steel	141	90310000	90310009	17010022
			02	2	Steel	200	90310001	90310010	
			03	3	Steel	330	90310002	90310011	
			05	5	Steel	246	90310003	90310012	17010051
			06	6	Steel	308	90310004	90310013	
			08	8	Steel	370	90310005	90310014	

F	*	Code	Mounting position
		0	Vertical without tank
		1	Horizontal
		2	Vertical (referred to the filling cap)
		3	
		4	
		5	

Note

