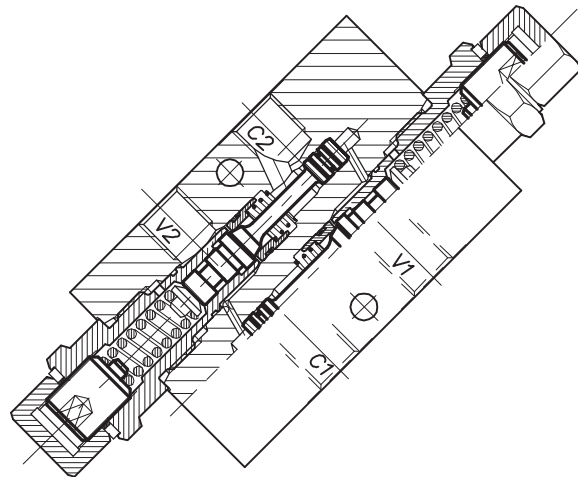
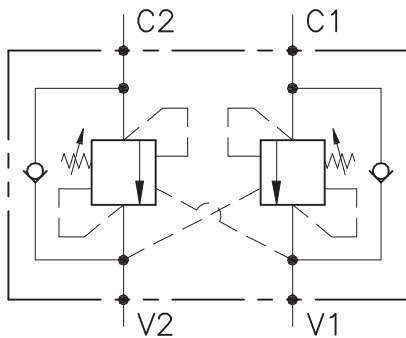


OWC-30-DEI-14-L



CARATTERISTICHE

Luce nominale
 Portata min/max
 Pressione max. di picco
 Pressione max. di taratura
 Rapporto di pilotaggio standard
 Temperatura ambiente
 Temperatura olio
 Filtraggio consigliato

DN 6
1/25 l/min - 0.26/6.6 GPM
350 bar - 5075 PSI
350 bar - 5075 PSI
Vedi tab. / See tab.
-30°C + 50°C
-30°C + 80°C
30 micron

PERFORMANCE

Rated size
 Min/max flow-rate
 Max peak pressure
 Max setting pressure
 Standard pilot ratio
 Room temperature
 Oil temperature
 Recommended filtration

NOTE:

La taratura deve essere **1.3** volte maggiore della pressione indotta dal carico.

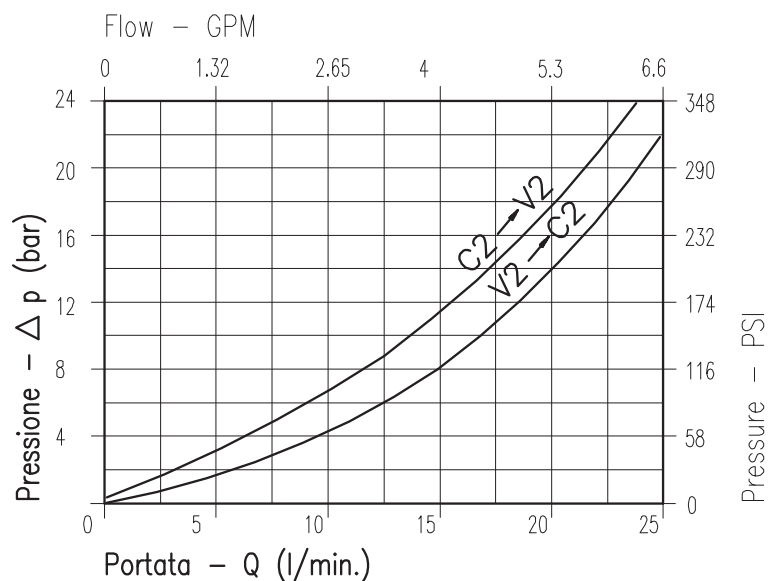
Valve should be set at **1.3** times load induced pressure.

ESEMPIO/EXAMPLE:

Pressione di lavoro max:

Max working pressure:

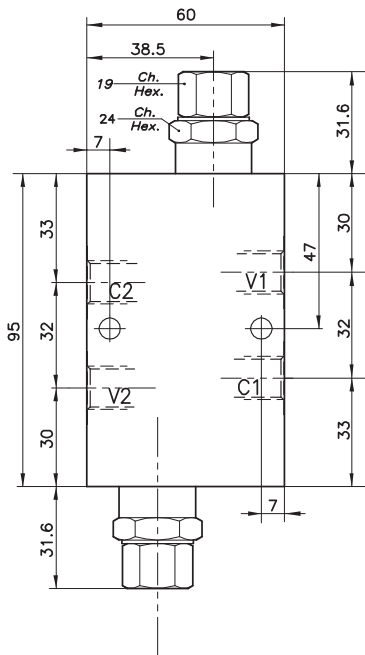
350 bar / 1.3 = 270 bar



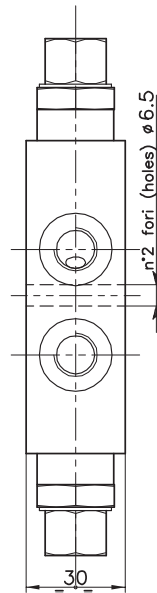
Viscosità olio 46 cSt a 50°C
Oil viscosity 46 cSt at 50°C

VALVOLA BILANCIAMENTO, BLOCCO E CONTROLLO MOVIMENTO A DOPPIO EFFETTO CON COLLETTORE IN LINEA
DOUBLE COUNTERBALANCE VALVE WITH IN LINE BODY

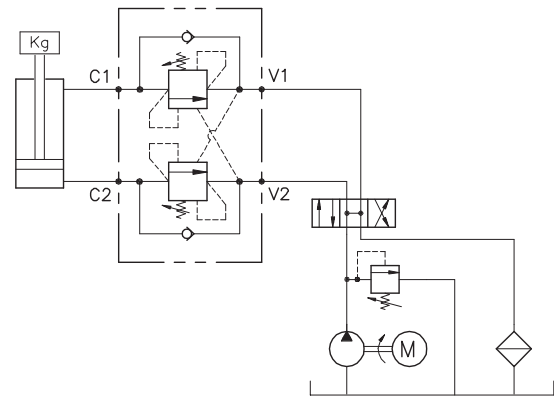
REGOLAZIONE
ADJUSTMENT



Grano
Dowel
(X)



ESEMPIO TIPICO DI CIRCUITO
TYPICAL CIRCUIT EXAMPLE



DIMENSIONI
DIMENSIONS

Campo taratura Setting range	Attacchi Port size V1-C1 V2-C2 GAS (BSPP)	Luce nominale Rated size	Portata max Max flow-rate
626	1/4"	DN 6	l/min - GPM 25-6

CODICE DI ORDINAZIONE
HOW TO ORDER

001 . 626 . 0 X 0 . A

Campo taratura / Setting range	
626	
Campo taratura 60÷350 bar (molla colore verde) Setting range 60÷350 bar (green spring)	
Taratura standard (Q=5 l/1') Std. bar setting Q=5 l/1')	Incr. press. - bar giro/vite Pressure rise - turn of screw
250 bar	(75)

Rapporto di pilotaggio Pilot ratios	Regolazione Adjustment	Collettore Body
O 4: 1 F 7: 1	X Grano - Dowel	A Acciaio zincato Zinc plated steel

626 Collettore possibile in AL togliendo "A"
Available aluminium body without "A"