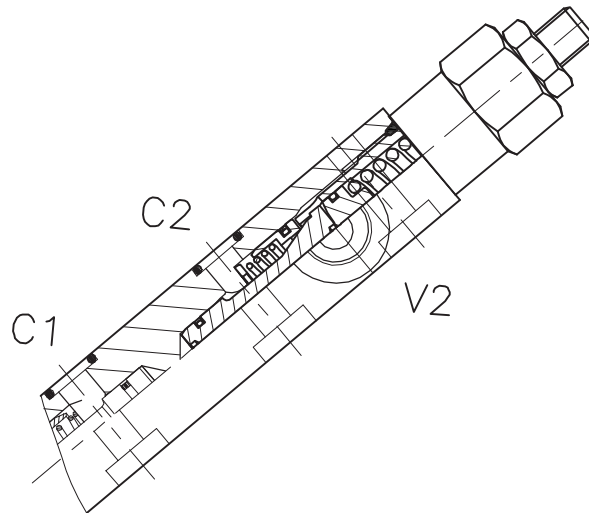
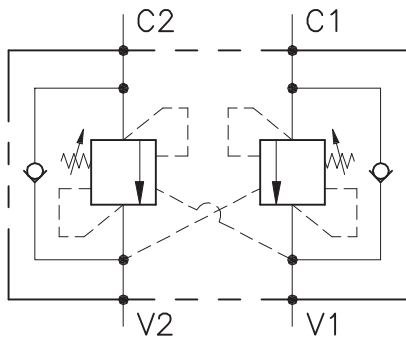


OWC-DE-...-LU-FC2-...



CARATTERISTICHE

Luce nominale	DN 10
Portata min/max	1/60 l/min - 0.26/15.9 GPM
Pressione max. di picco	350 bar - 5075 PSI
Pressione max. di taratura	350 bar - 5075 PSI
Rapporto di pilotaggio standard	Vedi tab. / See tab.
Temperatura ambiente	-30°C + 50°C
Temperatura olio	-30°C + 80°C
Filtraggio consigliato	30 micron
Peso	3/8" GAS 0.991 Kg
Peso	1/2" GAS 1.231 Kg

PERFORMANCE

Rated size
Min/max flow-rate
Max peak pressure
Max setting pressure
Standard pilot ratio
Room temperature
Oil temperature
Recommended filtration
Weight
Weight

NOTE:

La taratura deve essere **1.3** volte maggiore della pressione indotta dal carico.

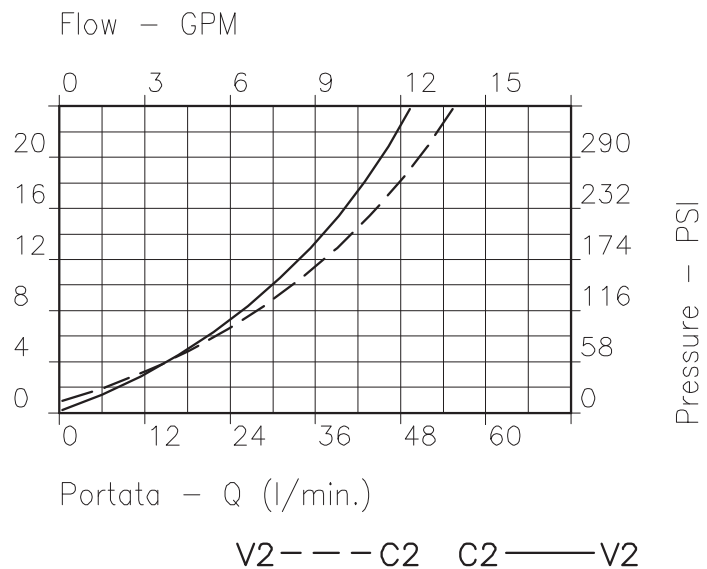
Valve should be set at **1.3** times load induced pressure.

ESEMPIO/EXAMPLE:

Pressione di lavoro max:

Max working pressure:

350 bar / 1.3 = 270 bar

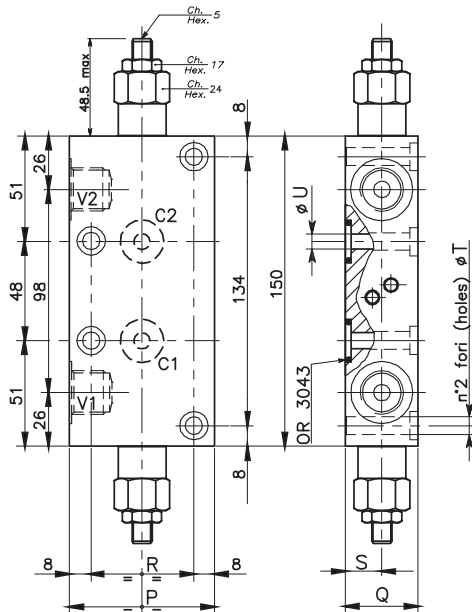


Viscosità olio 46 cSt a 50°C
Oil viscosity 46 cSt at 50°C

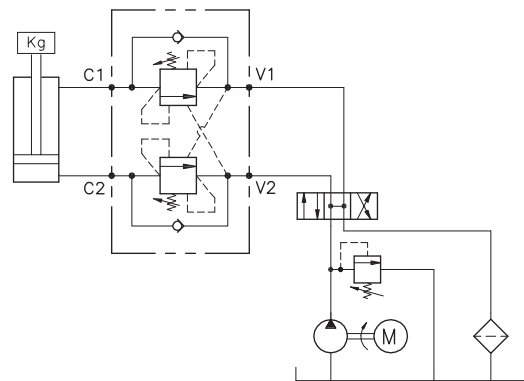
VALVOLA BILANCIAMENTO, BLOCCO E CONTROLLO MOVIMENTO A DOPPIO EFFETTO CON COLLETTORE FLANGIATO
DOUBLE COUNTERBALANCE VALVE WITH FLANGEABLE BODY

REGOLAZIONE
ADJUSTMENT

Grano
Dowel
(X)



ESEMPIO TIPICO DI CIRCUITO
TYPICAL CIRCUIT EXAMPLE



DIMENSIONI
DIMENSIONS

Campo taratura Setting range	P	Q	R	S	T	U	Attacchi Port size V2-V1 GAS (BSPP)	Luce nominale Rated size DN	Portata max Max flow-rate l/min - GPM
022	60	29.5	44	14.5	6.5	6	3/8"	8	40-10
023	70	34.5	54	17	8.5	8	1/2"	10	60-15

CODICE DI ORDINAZIONE
HOW TO ORDER

001 . 022 . 0 X 0

Campo taratura / Setting range
022
023

Campo taratura 60÷350 bar (molla colore giallo)
Setting range 60÷350 bar (yellow spring)

Taratura standard (Q=5 l/1')
Std. bar setting (Q=5 l/1')
250 bar

Incr. press. - bar giro/vite
Pressure rise - turn of screw
(90)

Rapporto di pilotaggio
Pilot ratios
O 4.25: 1
D 8: 1

Regolazione
Adjustment
X Grano - Dowel

Collettore in alluminio
Aluminum manifold