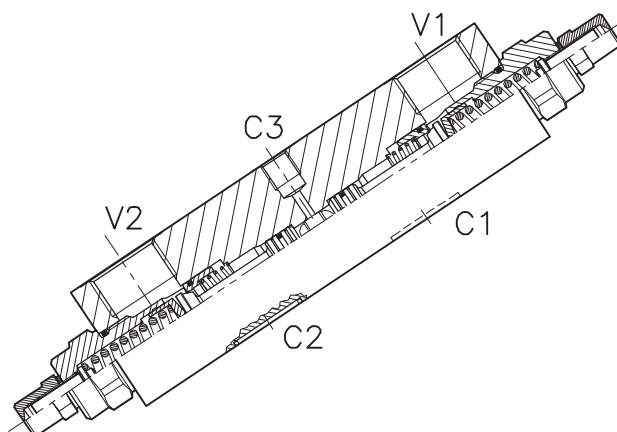
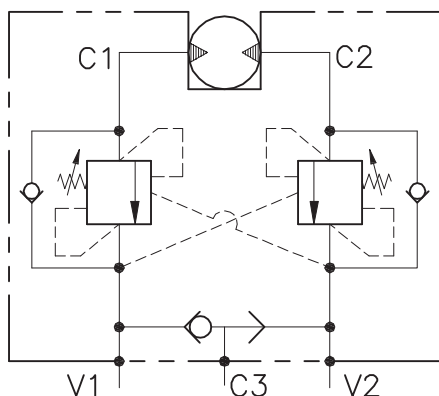


OWC-DE-VFF-...-14-FHV2-...



CARATTERISTICHE

Luce nominale	DN 14
Portata min/max	10/160 l/min - 2.5/42,3 GPM
Pressione max. di picco	350 bar - 5075 PSI
Pressione max. di taratura	350 bar - 5075 PSI
Rapporto di pilotaggio standard	Vedi tab. / See tab.
Temperatura ambiente	-30°C + 50°C
Temperatura olio	-30°C + 80°C
Filtraggio consigliato	30 micron

PERFORMANCE

Rated size
Min/max flow-rate
Max peak pressure
Max setting pressure
Standard pilot ratio
Room temperature
Oil temperature
Recommended filtration

NOTE:

La taratura deve essere **1.3** volte maggiore della pressione indotta dal carico.

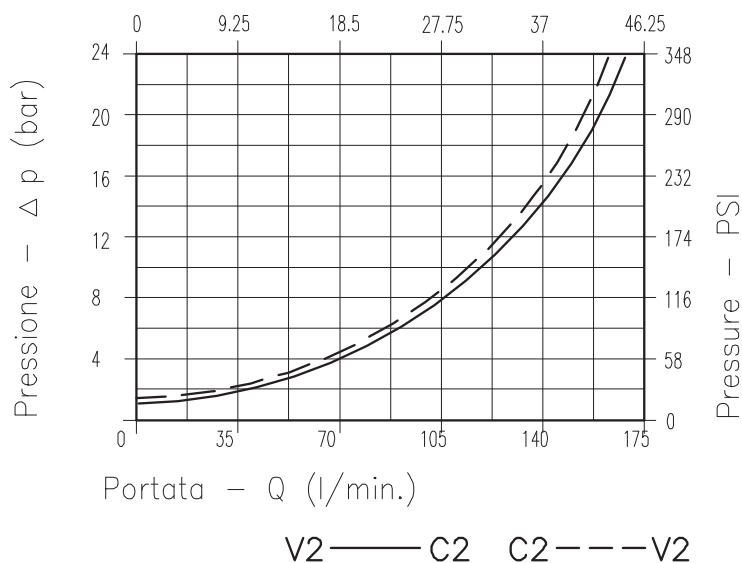
Valve should be set at **1.3** times load induced pressure.

ESEMPIO/EXAMPLE:

Pressione di lavoro max:

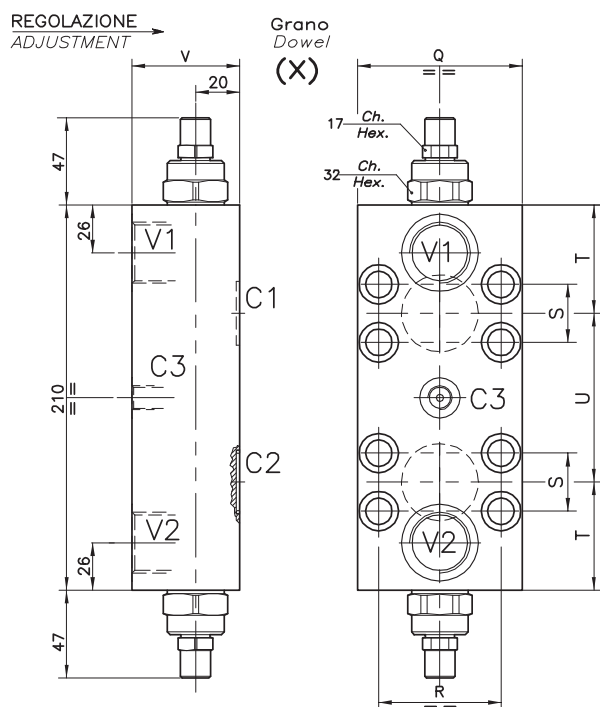
Max working pressure:

350 bar / 1.3 = 270 bar



Viscosità olio 46 cSt a 50°C
Oil viscosity 46 cSt at 50°C

VALVOLA BILANCIAMENTO, BLOCCO E CONTROLLO MOVIMENTO A DOPPIO EFFETTO FLANGIATA MOTORE
DOUBLE COUNTERBALANCE MOTOR FLANGEABLE VALVE



DIMENSIONI
DIMENSIONS

Campo taratura Setting range	Q	R	S	T	U	V	Attacchi Port size C1-C2 GAS (BSPP)	Attacchi Port size V1-V2 GAS (BSPP)	Attacchi Port size C3 GAS (BSPP)	Tipo Motore Motor type	Portata max Max flow-rate l/min - GPM
104	70	50.8	23.8	69	72	49	Ø 15	3/4"	1/4"	H2V 55	120-31
102	80	57.2	27.8	64	82	59	Ø 15	1"	1/4"	H2V 75-108	160-42

CODICE DI ORDINAZIONE
HOW TO ORDER

001 . 104 . 0 X 0

Campo taratura / Setting range
 104
 102

Campo taratura 60÷350 bar (molla colore giallo)
 Setting range 60÷350 bar (yellow spring)

Taratura standard (Q=5 l/1')
 Std. bar setting Q=5 l/1')
250 bar

Incr. press. - bar giro/vite
 Pressure rise - turn of screw
(125)

Rapporto di pilotaggio
 Pilot ratios
 O 6.2: 1
 G 4.1: 1

Regolazione
 Adjustment
 X Grano - Dowel

Collettore in alluminio
 Aluminum manifold