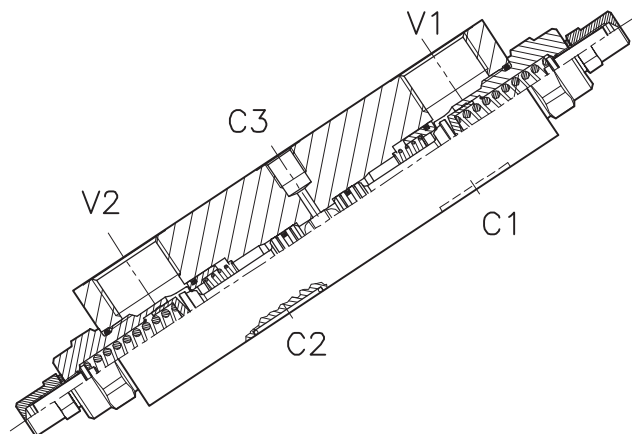
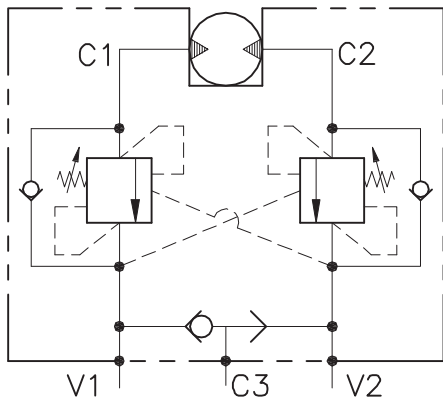


OWC-DE-VFF-...-14-FMV2-...



CARATTERISTICHE

Luce nominale	DN 14
Portata min/max	1/160 l/min - 0.26/42,3 GPM
Pressione max. di picco	350 bar - 5075 PSI
Pressione max. di taratura	350 bar - 5075 PSI
Rapporto di pilotaggio standard	Vedi tab. / See tab.
Temperatura ambiente	-30°C + 50°C
Temperatura olio	-30°C + 80°C
Filtraggio consigliato	30 micron

PERFORMANCE

Rated size
Min/max flow-rate
Max peak pressure
Max setting pressure
Standard pilot ratio
Room temperature
Oil temperature
Recommended filtration

NOTE:

La taratura deve essere **1.3** volte maggiore della pressione indotta dal carico.

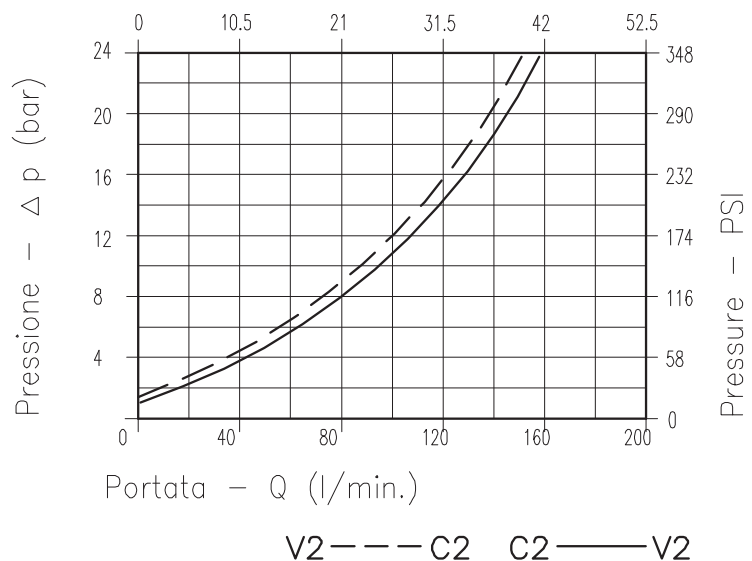
Valve should be set at **1.3** times load induced pressure.

ESEMPIO/EXAMPLE:

Pressione di lavoro max:

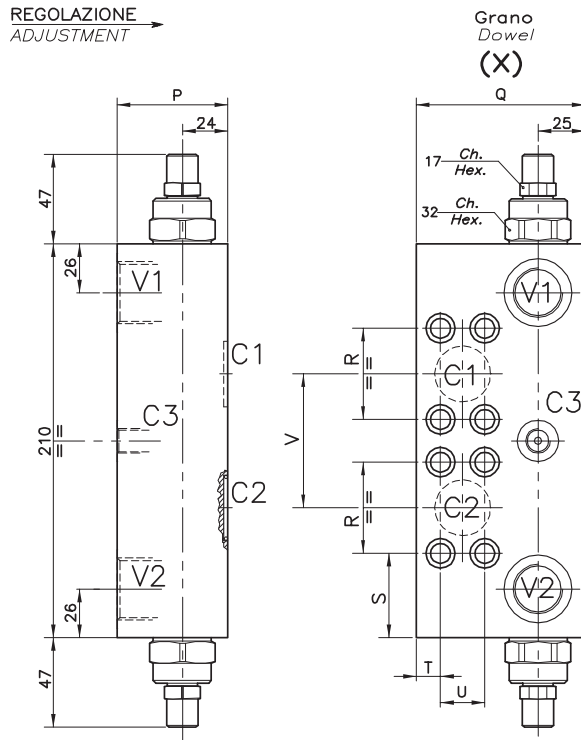
Max working pressure:

350 bar / 1.3 = 270 bar



Viscosità olio 46 cSt a 50°C
Oil viscosity 46 cSt at 50°C

VALVOLA BILANCIAMENTO, BLOCCO E CONTROLLO MOVIMENTO A DOPPIO EFFETTO FLANGIATA MOTORE
DOUBLE COUNTERBALANCE MOTOR FLANGEABLE VALVE



DIMENSIONI
DIMENSIONS

Campo taratura Setting range	P	Q	R	S	T	U	V	Attacchi	Attacchi	Attacchi	Tipo Motore Motor type	Portata max Max flow-rate
								Port size C1-C2	Port size V1-V2 GAS (BSPP)	Port size C3 GAS (BSPP)		
094	69	100	57.2	34.4	12	27.8	84	Ø 15	1"	1/4"	H1CR 90-108 HMT (84)	180-47
101	59	90	50.8	42.1	13	23.8	75	Ø 15	3/4"	1/4"	H1CR 45-55-75 HMT (75)	120-31
095	59	80	40.5	55.2	16.8	18.2	59	Ø 15	1/2"	1/4"	H1CR 20-30 HMT (59)	70-18

CODICE DI ORDINAZIONE
HOW TO ORDER

001 . 094 . 0 X 0

Campo taratura / Setting range 094 101 095		Rapporto di pilotaggio Pilot ratios O 6.2: 1 G 4.1: 1		Regolazione Adjustment X Grano - Dowel
Campo taratura 60÷350 bar (molla colore giallo) Setting range 60÷350 bar (yellow spring)				
Taratura standard (Q=5 l/1') Std. bar setting Q=5 l/1') 250 bar	Incr. press. - bar giro/vite Pressure rise - turn of screw (125)	Collettore in alluminio Aluminum manifold		