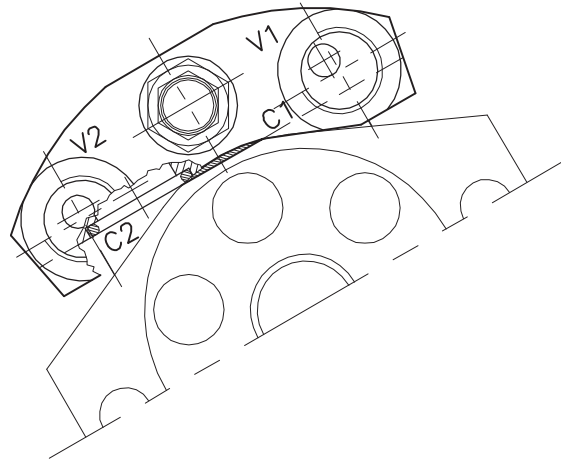
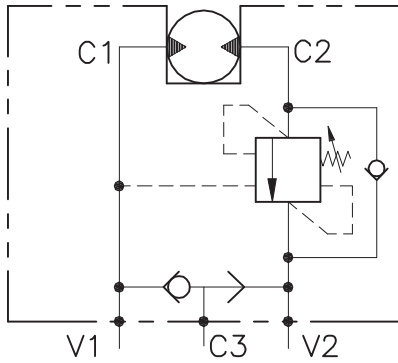


OWC-SE-12-FMD-G-...



CARATTERISTICHE

Luce nominale	DN 10
Portata min/max	1/60 l/min - 0.26/15.9 GPM
Pressione max. di picco	350 bar - 5075 PSI
Pressione max. di taratura	220 bar - 3190 PSI
Rapporto di pilotaggio standard	4.25: 1
Temperatura ambiente	-30°C + 50°C
Temperatura olio	-30°C + 80°C
Filtraggio consigliato	30 micron

PERFORMANCE

Rated size
Min/max flow-rate
Max peak pressure
Max setting pressure
Standard pilot ratio
Room temperature
Oil temperature
Recommended filtration

NOTE:

La taratura deve essere **1.3** volte maggiore della pressione indotta dal carico.

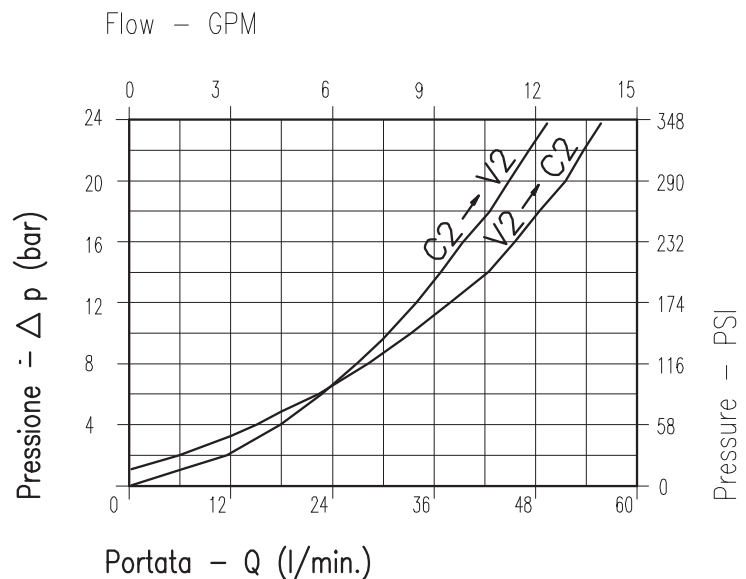
Valve should be set at **1.3** times load induced pressure.

ESEMPIO/EXAMPLE:

Pressione di lavoro max:

Max working pressure:

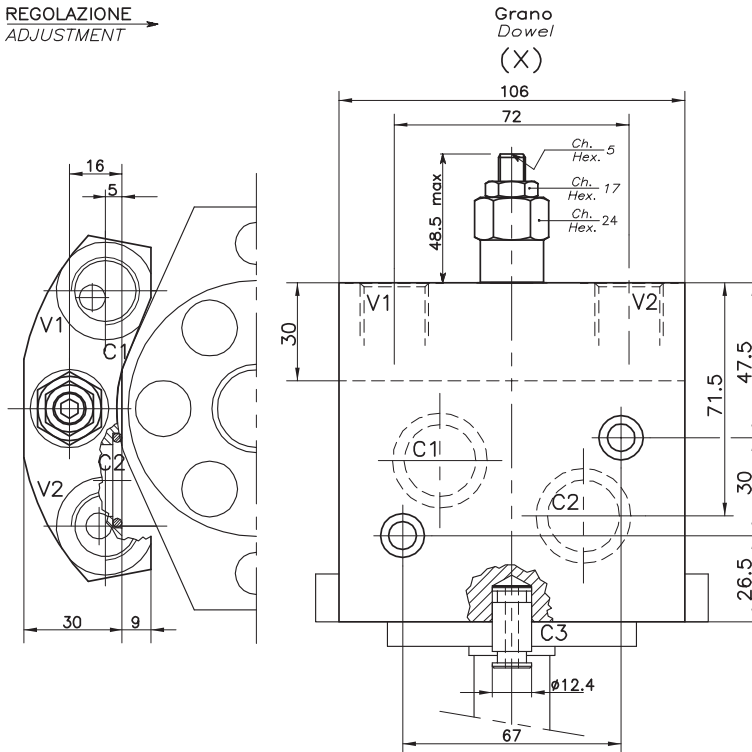
350 bar / 1.3 = 270 bar



Viscosità olio 46 cSt a 50°C
Oil viscosity 46 cSt at 50°C

VALVOLA BILANCIAMENTO BLOCCO E CONTROLLO MOVIMENTO A SEMPLICE EFFETTO FLANGIATA MOTORE SINGLE COUNTERBALANCE MOTOR FLANGEABLE VALVE

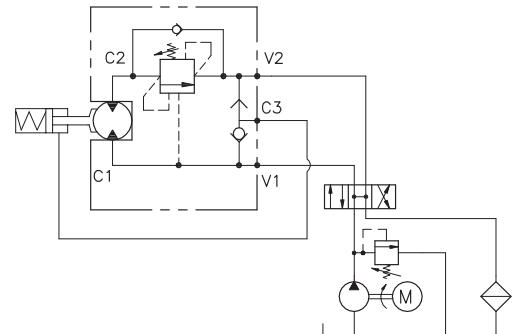
REGOLAZIONE
ADJUSTMENT



DIMENSIONI DIMENSIONS

Campo taratura Setting range	Attacchi Port size V1-C1 GAS (BSPP)	Attacchi Port size C3 GAS (BSPP)	Tipo motore Motor type	Portata max Max flow-rate l/min - GPM
202	1/2"	Ø12	Oil drive (44x17)	60-15

ESEMPIO TIPICO DI CIRCUITO TYPICAL CIRCUIT EXAMPLE



CODICE DI ORDINAZIONE HOW TO ORDER

N01 . 202 . 0 X 0

Campo taratura / Setting range

202

Campo taratura 30÷220 bar (molla colore verde)
Setting range 30÷220 bar (green spring)

Taratura standard (Q=5 l/1')
Std. bar setting (Q=5 l/1')
180 bar

Incr. press. - bar giro/vite
Pressure rise - turn of screw
(50)

Rapporto di pilotaggio
Pilot ratios

0 | 4.25: 1

Regolazione
Adjustment

X | Grano - Dowel