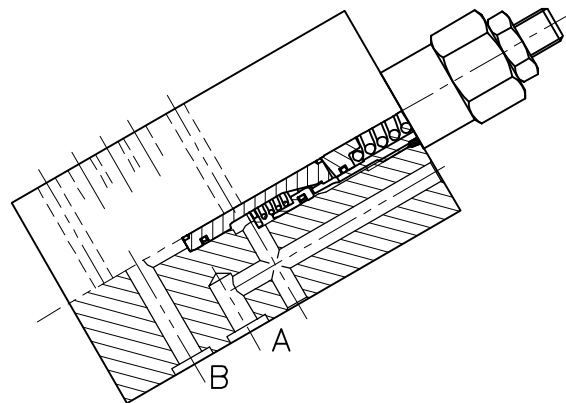
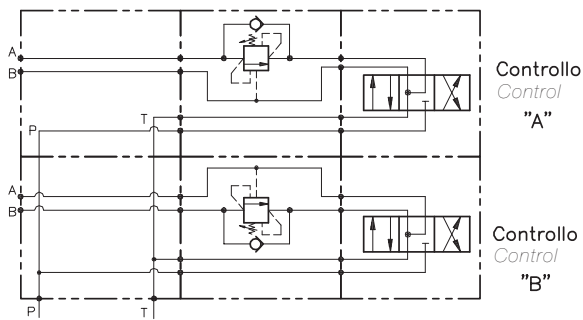


# OWC-SE-L6-...



## CARATTERISTICHE

Luce nominale	<b>DN 6</b>
Portata min/max	<b>1/50 l/min - 0.26/12.5 GPM</b>
Pressione max. di picco	<b>350 bar - 5075 PSI</b>
Pressione max. di taratura	<b>350 bar - 5075 PSI</b>
Rapporto di pilotaggio standard	<b>Vedi tab. / See tab.</b>
Temperatura ambiente	<b>-30°C + 50°C</b>
Temperatura olio	<b>-30°C + 80°C</b>
Filtraggio consigliato	<b>30 micron</b>

## PERFORMANCE

Rated size
Min/max flow-rate
Max peak pressure
Max setting pressure
Standard pilot ratio
Room temperature
Oil temperature
Recommended filtration

### NOTE:

La taratura deve essere **1.3** volte maggiore della pressione indotta dal carico.

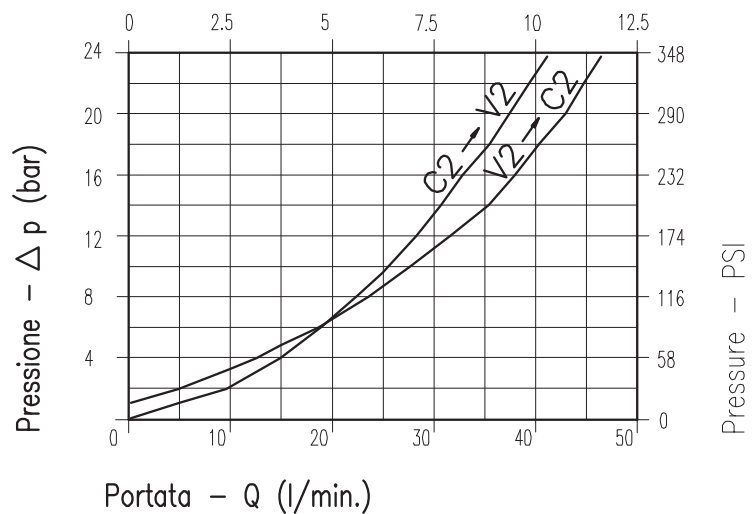
Valve should be set at **1.3** times load induced pressure.

### ESEMPIO/EXAMPLE:

Pressione di lavoro max:

Max working pressure:

**350 bar / 1.3 = 270 bar**

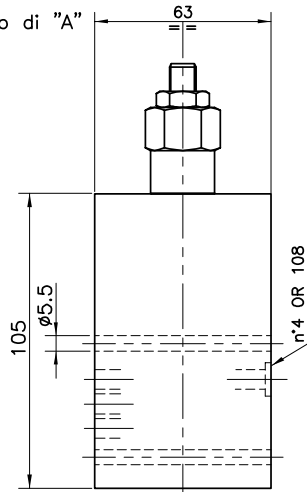


Viscosità olio 46 cSt a 50°C  
Oil viscosity 46 cSt at 50°C

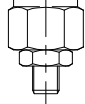
# VALVOLA BILANCIAMENTO, BLOCCO E CONTROLLO DISCESA A SEMPLICE EFFETTO CON MONTAGGIO CETOP SINGLE COUNTERBALANCE WITH SANDWICH INSTALLATION (CETOP)

REGOLAZIONE  
ADJUSTMENT →

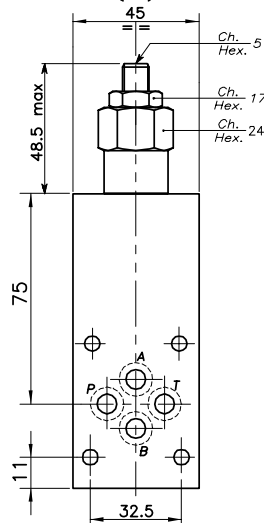
Controllo di "A"



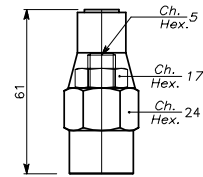
Controllo di "B"



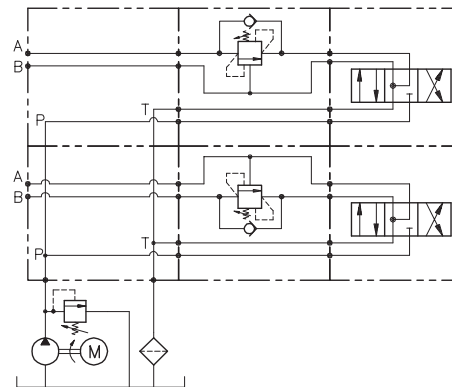
Grano  
Dowel  
(X)



Piombata  
Sealed  
(K)



## ESEMPIO TIPICO DI CIRCUITO TYPICAL CIRCUIT EXAMPLE



## DIMENSIONI DIMENSIONS

Campo taratura Setting range		Tipo flangia Flange type	Portata max Max flow-rate l/min - GPM	Controllo Control
229	228	CETOP 03	50-12.5	A
231	230	CETOP 03	50-12.5	B

## CODICE DI ORDINAZIONE HOW TO ORDER

N01 . 229 . 0 X 0 . A

Campo taratura / Setting range				Rapporto di pilotaggio Pilot ratios	Regolazione Adjustment	Collettore Body
229	228	231	230			
Campo taratura 30÷220 bar (molla colore verde) Setting range 30÷220 bar (green spring)	Campo taratura 60÷350 bar (molla colore giallo) Setting range 60÷350 bar (yellow spring)	Taratura standard (Q=5 l/1') Std. bar setting (Q=5 l/1') <b>180 bar</b>	Taratura standard (Q=5 l/1') Std. bar setting (Q=5 l/1') <b>250 bar</b>	Incr. press. - bar giro/vite Pressure rise - turn of screw <b>(50)</b>	Incr. press. - bar giro/vite Pressure rise - turn of screw <b>(90)</b>	