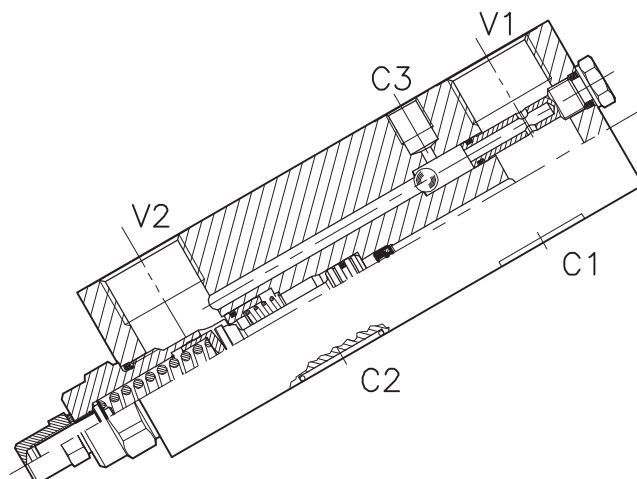
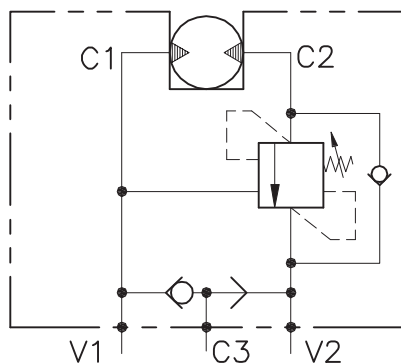


# OWC-SE-VFF-...-14-FMV2-...



## CARATTERISTICHE

Luce nominale  
 Portata min/max  
 Pressione max. di picco  
 Pressione max. di taratura  
 Rapporto di pilotaggio standard  
 Temperatura ambiente  
 Temperatura olio  
 Filtraggio consigliato

**DN 14**  
**1/160 l/min - 0.26/42,3 GPM**  
**350 bar - 5075 PSI**  
**350 bar - 5075 PSI**  
**Vedi tab. / See tab.**  
**-30°C + 50°C**  
**-30°C + 80°C**  
**30 micron**

## PERFORMANCE

Rated size  
 Min/max flow-rate  
 Max peak pressure  
 Max setting pressure  
 Standard pilot ratio  
 Room temperature  
 Oil temperature  
 Recommended filtration

### NOTE:

La taratura deve essere **1.3** volte maggiore della pressione indotta dal carico.

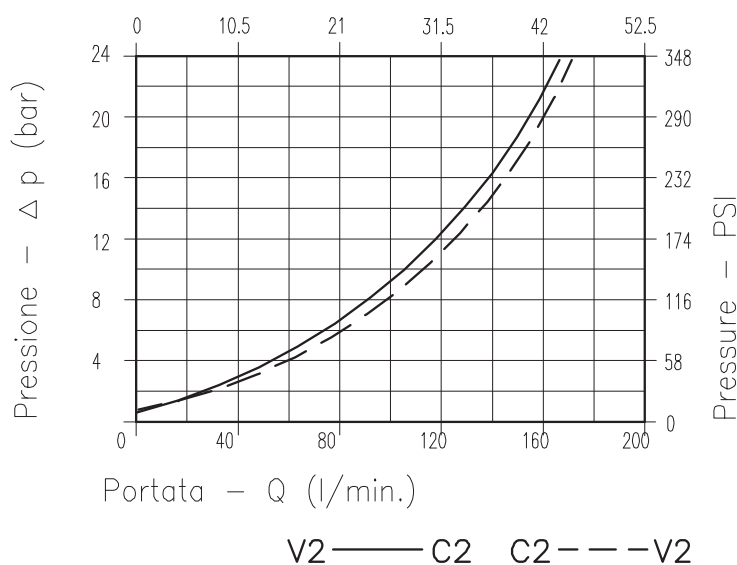
Valve should be set at **1.3** times load induced pressure.

### ESEMPIO/EXAMPLE:

Pressione di lavoro max:

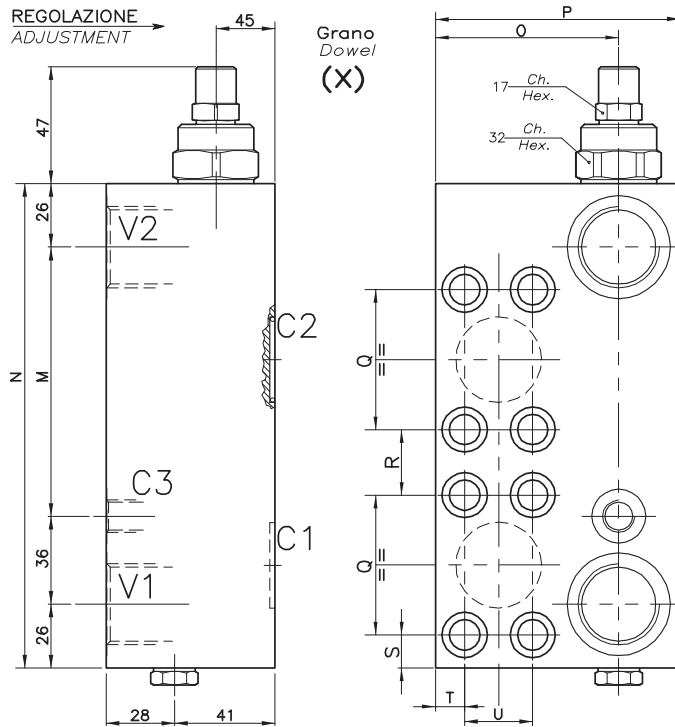
Max working pressure:

**350 bar / 1.3 = 270 bar**



Viscosità olio 46 cSt a 50°C  
 Oil viscosity 46 cSt at 50°C

**VALVOLA BILANCIAMENTO BLOCCO E CONTROLLO MOVIMENTO A SEMPLICE EFFETTO FLANGIATA MOTORE  
SINGLE COUNTERBALANCE MOTOR FLANGEABLE VALVE**



**DIMENSIONI  
DIMENSIONS**

Campo taratura Setting range	M	N	O	P	Q	R	S	T	U	Attacchi Port size C1-C2	Attacchi Port size V1-V2 GAS (BSPP)	Attacchi Port size C3 GAS (BSPP)	Tipo Motore Motor type
	564	110	198	75	100	57.2	26.8	13.4	12	27.8	Ø 15	1"	1/4"
565	95	183	65	90	50.8	24.2	11	13	23.8	Ø 15	3/4"	1/4"	H1CR 45-55-75 HMT (75)
566	67	155	55	80	40.6	18.4	9	9	18.2	Ø 15	1/2"	1/4"	H1CR 20-30 HMT (59)

**CODICE DI ORDINAZIONE  
HOW TO ORDER**

001 564 0 X 0

Campo taratura / Setting range  
564  
565  
566

Campo taratura 60÷350 bar (molla colore giallo)  
Setting range 60÷350 bar (yellow spring)

Taratura standard (Q=5 l/1')  
Std. bar setting Q=5 l/1')  
**250 bar**

Incr. press. - bar giro/vite  
Pressure rise - turn of screw  
**(125)**

Rapporto di pilotaggio  
Pilot ratios  
O 6.2: 1  
G 4.1: 1

Regolazione  
Adjustment  
X | Grano - Dowel

Collettore in alluminio  
Aluminum manifold