

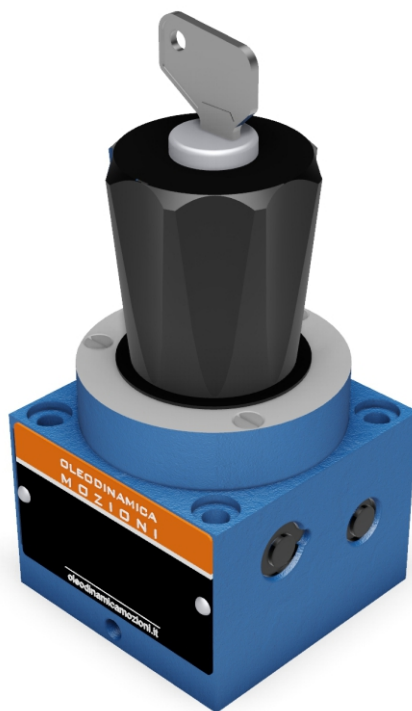


VALVOLE DI FLUSSO

2FRM5

FLOW CONTROL VALVES

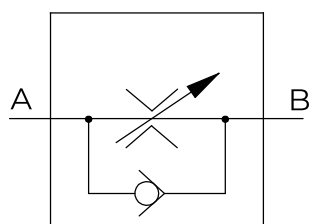
2FRM5 SERIES ARE RESTRICTIVE FLOW REGULATORS, WITHOUT AFFECTED BY PRESSURE AND TEMPERATURE. THIS VALVES MAY BE MOUNTED IN A HYDRAULIC CIRCUIT IN ANY POSITION.



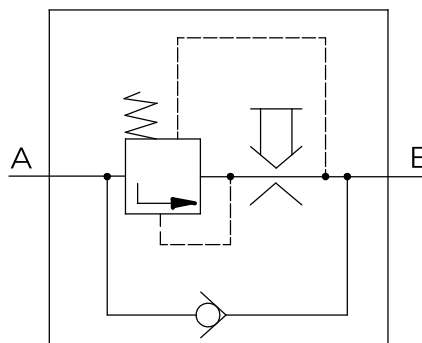
TECHNICAL DATA

SIZE	5
MAX. FLOW RATE (L/MIN)	15
OPERATING PRESSURE (MPA)	21
FLUID TEMPERATURE (°C)	-20 - 70
FILTRATION ACCURACY (µM)	16 (Q<5 L/MIN); 10 (Q<0.5 L/MIN)
WEIGHT (KG)	1.6
VALVE BODY (MATERIAL)	CASTING PHOSPHATING SURFACE

SCHEMES



SIMPLIFIED

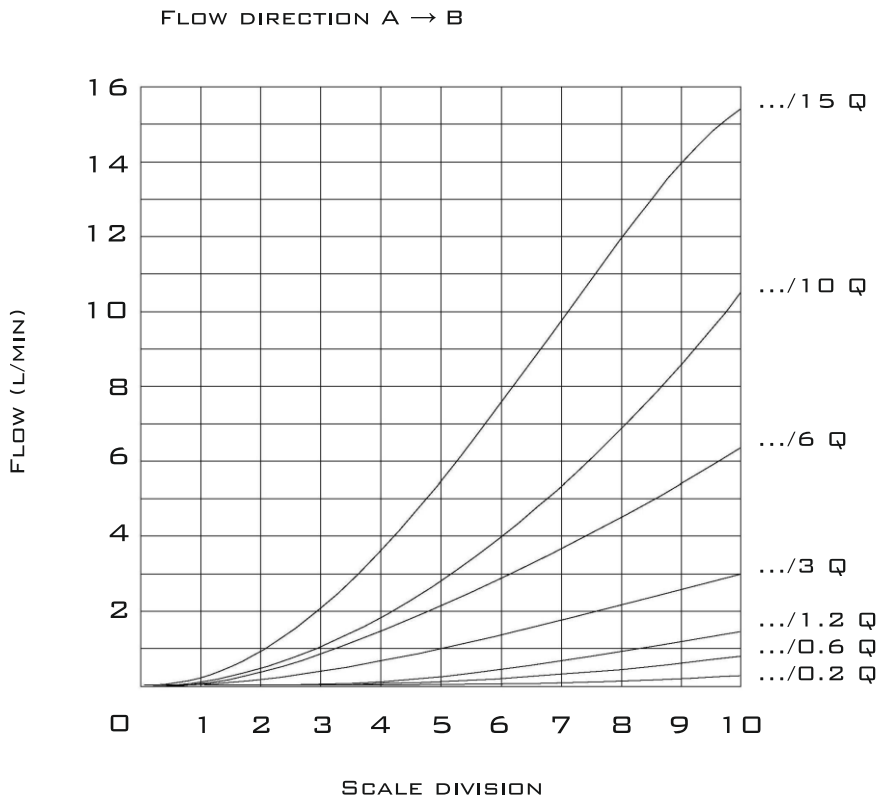


STANDART



CHARACTERISTIC CURVES

CHARACTERISTIC CURVES OF FLOW RELATION TO HANDKNOB POSITION ON SCALE FOR FLOW CONTROL VALVES WITH DIFFERENT SETTABLE FLOW RANGES



2FRM5

VALVOLE DI FLUSSO



FLOW CONTROL VALVES

ORDER CODE

2FRM	5	30					
------	---	----	--	--	--	--	--

5=5 SIZE

30=30 SERIES

0.2Q=To 0.2 L/MIN
0.6Q=To 0.6 L/MIN
1.2Q=To 1.2 L/MIN
3Q=To 3 L/MIN
6Q=To 6 L/MIN
10Q=To 10 L/MIN
15Q=To 15 L/MIN

EXPLAIN OTHER DETAILS

NO CODE=NBR SEALS
V=FKM SEALS

A=WITH EXTERNAL SWITCH OF
PRESSURE COMPENSATION
(RESTRAIN THROB WHEN START)
B=WITHOUT EXTERNAL SWITCH OF
PRESSURE COMPENSATION