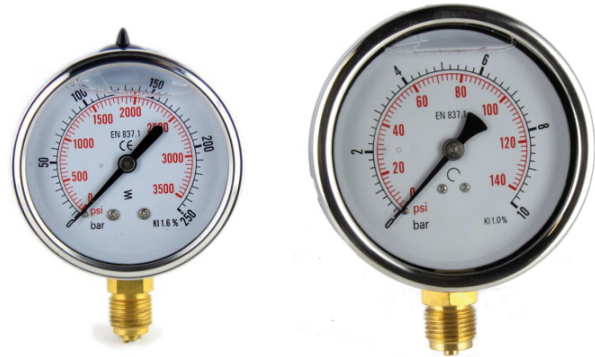


**PRESSURE GAUGES
STAINLESS STEEL CASE (GLYNERINE) BOTTOM**

PRESSURE GAUGES SUITABLE FOR ALL PROCESS GASEOUS AND LIQUID THAT DON'T ATTACK COPPER ALLOY PARTS. INTENDED FOR ADVERSE SERVICE CONDITIONS WHERE PULSATING OR VIBRATION ESE SERVICE CONDITIONS WHERE PULSATING OR VIBRATION EXISTS. MADE ACCORDING UNI EN 837.1 NORMS.

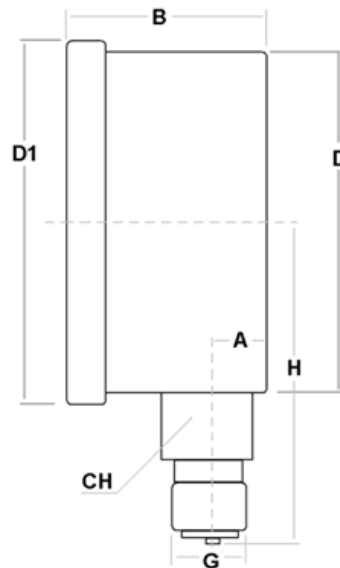


TECHNICAL DATA

| | | |
|----------------------------|--------------------------------------|------------------|
| DIAL | 40 - 50 - 63 - 80 - 100 - 150 MM | |
| THREAD CONNECTION | DIAL 40 MM - 1/8" BSPT | |
| | DIAL 50, 63, 80 - 1/4" BSPP | |
| | DIAL 100, 150 - 1/2" BSPP | |
| ACCURACY | DIAL 40, 50 - 2,5% | |
| | DIAL 63 - 1,6% | |
| | DIAL 80, 100, 150 - 1% | |
| WORKING TEMPERATURE | -10 +60 OC (+14 +140 OF) | |
| WORKING PRESSURE | STEADY | 75% OF THE SCALE |
| | VARIABLE | 60% OF THE SCALE |
| WORKING TEMPERATURE | 25% <60 BAR> 15% (ACCORDING EN873.1) | |

| VACUUM | COMPOUND | MANOMETR |
|--------------------|----------|-----------|
| -1 - 0 BAR+CMHG | | 0,6 |
| | | 1 |
| | | 1,6 |
| | | 2,5 |
| | | 4 |
| | | 6 |
| | | 10 |
| | | 16 |
| | | 25 |
| | | 40 |
| | | 60 |
| | | 100 |
| | | 160 |
| | | 250 |
| | | 315 |
| | 400 | |
| | 600 | |
| | 1000 | |
| | 1600 | |
| | BAR ONLY | BAR + Psi |

OPTIONS



| DIAL | A | B | D | D1 | H | G | CH | WEIGHT (KG) |
|------|-----|----|------|-----|-----|-----------|----|-------------|
| 40 | 0.5 | 25 | 40.5 | 44 | 38 | 1/8" BSPT | 11 | 0.11 |
| 50 | 10 | 30 | 52 | 57 | 49 | 1/4" BSPP | 14 | 0.15 |
| 63 | 10 | 29 | 62 | 68 | 57 | 1/4" BSPP | 14 | 0.20 |
| 80 | 10 | 38 | 79 | 88 | 69 | 1/4" BSPP | 14 | 0.45 |
| 100 | 10 | 38 | 98.5 | 110 | 82 | 1/2" BSPP | 22 | 0.65 |
| 150 | 18 | 54 | 149 | 160 | 110 | 1/2" BSPP | 22 | 0.85 |

- STAINLESS STEEL CASE;
- PROTECTION DEGREE - IP65;
- BRASS SPRING, MOVEMENT AND PIVOT;
- ALUMINIUM INDEX;
- ALUMINIUM DIAL;
- WHITE BACKGROUND;

**ORDER CODE**

| | | | |
|--|---|--|-----|
| | R | | MGE |
|--|---|--|-----|

DIAL

40=40MM

50=50MM

63=63MM

80=80MM

100=100MM

150=150MM

R=RADIAL

PRESSURE RANGE

-1-0=-1-0BAR+CMHG

-1+0,6=-1-+0,6 BAR

-1+1,5=-1-+1,5 BAR

-1+3=-1-+3 BAR

-1+5=-1-+5 BAR

-1+9=-1-+9 BAR

-1+15=-1-+15 BAR

0,6=0-0,6, BAR+Psi

1=0-1, BAR+Psi

1,6=0-1,6, BAR+Psi

2,5=0-2,5, BAR+Psi

4=0-4, BAR+Psi

6=0-6, BAR+Psi

10=0-10, BAR+Psi

16=0-16, BAR+Psi

25=0-25, BAR+Psi

40=0-40, BAR+Psi

60=0-60, BAR+Psi

100=0-100, BAR+Psi

160=0-160, BAR+Psi

250=0-250, BAR+Psi

315=0-315, BAR+Psi

400=0-400, BAR+Psi

600=0-600, BAR+Psi

1000=0-1000, BAR+Psi

1600=0-1600, BAR+Psi