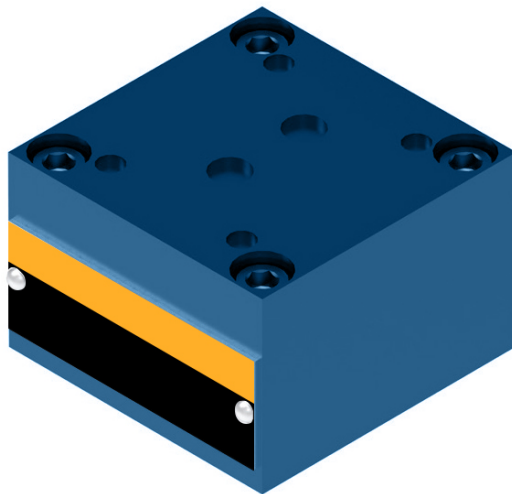




RECTIFIER SANDWICH PLATE

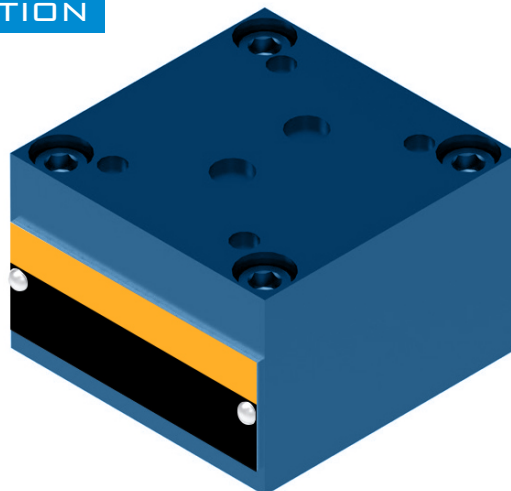
TYPE Z4S



WWW.OLEDDINAMICAMOZIONI.IT

Z4S INTRODUCTION

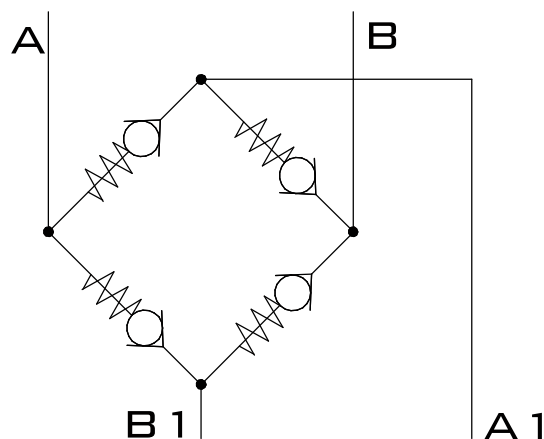
RECTIFIER SANDWICH PLATE TYPE **Z4S...** IS USED TO SET FLUID FLOW DIRECTION ON OUTLET FROM **A** TO **B** INDEPENDENT OF SUPPLY DIRECTION ON INLET **A1**; **B1**. THE PLATE IS MOUNTED UNDER FLOW CONTROL VALVE TYPE **2FRM...**



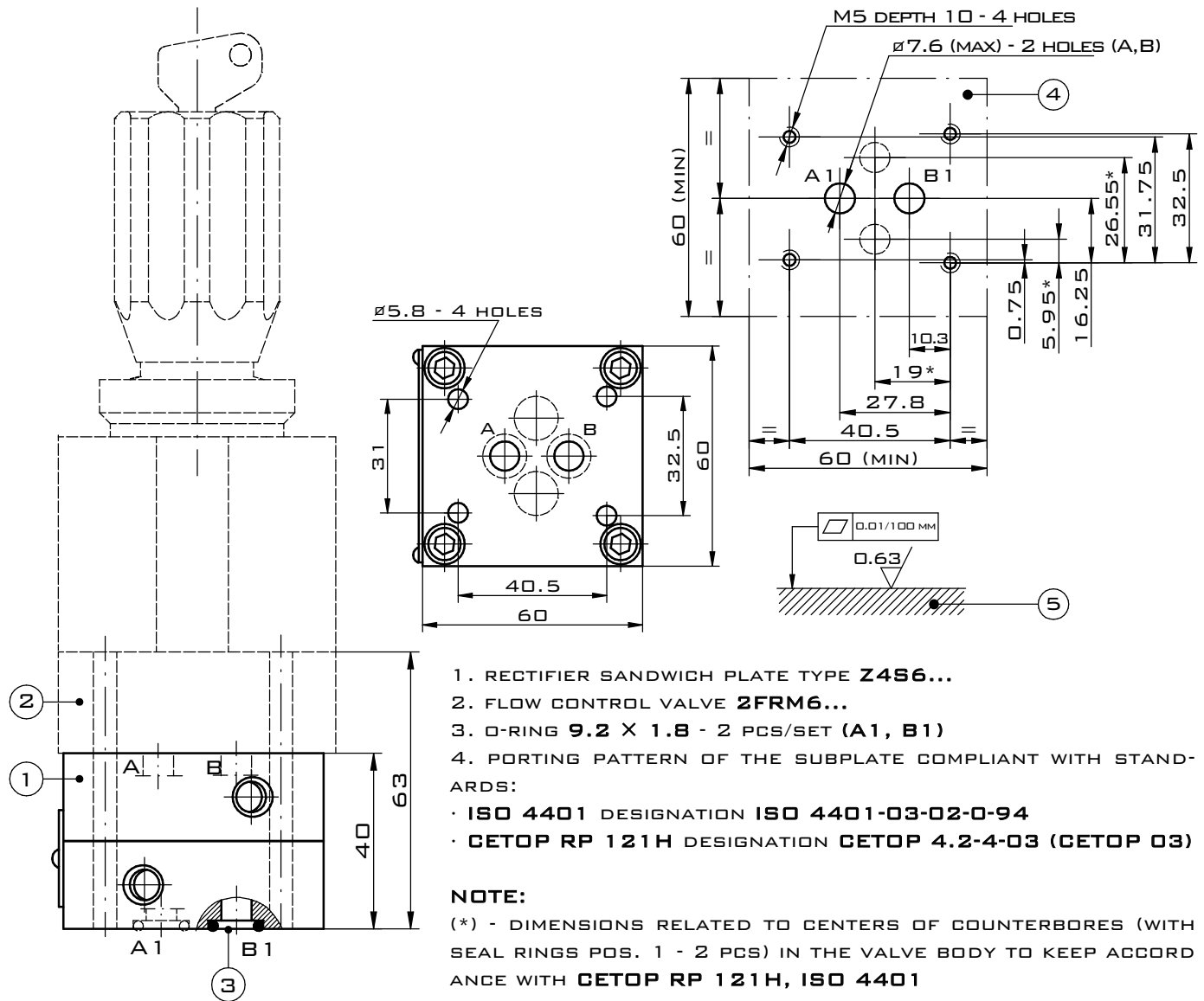
Z4S TECHNICAL PARAMETERS

SIZE	6	10	16
HYDRAULIC FLUID	MINERAL OIL		
REQUIRED OIL CLEANLINESS CLASS	ISO 4406 CLASS 20/18/15		
NOMINAL FLUID VISCOSITY	37 MM ² /S AT TEMPERATURE 55°C		
VISCOSITY RANGE	2.8 ÷ 380 MM ² /S		
FLUID TEMPERATURE RANGE (IN THE TANK)	REC.: 40 ÷ 55°C; MAX. -20 ÷ +70°C		
AMBIENT TEMPERATURE RANGE	-20 ÷ 70°C		
MAX. WORKING PRESSURE	35 MPA		
CHECK VALVES CRACKING PRESSURE	0.07 MPA	0.15 MPA	0.15 MPA
WEIGHT	1.4 KG	3.9 KG	3.9 KG

HYDRAULIC DIAGRAM



Z456 OVERALL AND CONNECTION DIMENSIONS



- 1. RECTIFIER SANDWICH PLATE TYPE **Z456...**
- 2. FLOW CONTROL VALVE **2FRM6...**
- 3. O-RING **9.2 X 1.8** - 2 PCS/SET (**A1, B1**)
- 4. PORTING PATTERN OF THE SUBPLATE COMPLIANT WITH STANDARDS:
 - ISO 4401 DESIGNATION **ISO 4401-03-02-0-94**
 - GETOP RP 121H DESIGNATION **GETOP 4.2-4-03 (GETOP 03)**

NOTE:
 (*) - DIMENSIONS RELATED TO CENTERS OF COUNTERBORES (WITH SEAL RINGS POS. 1 - 2 PCS) IN THE VALVE BODY TO KEEP ACCORDANCE WITH **GETOP RP 121H, ISO 4401**

5. REQUIRED SURFACE QUALITY OF THE VALVE CONTACT SURFACE

SUBPLATES

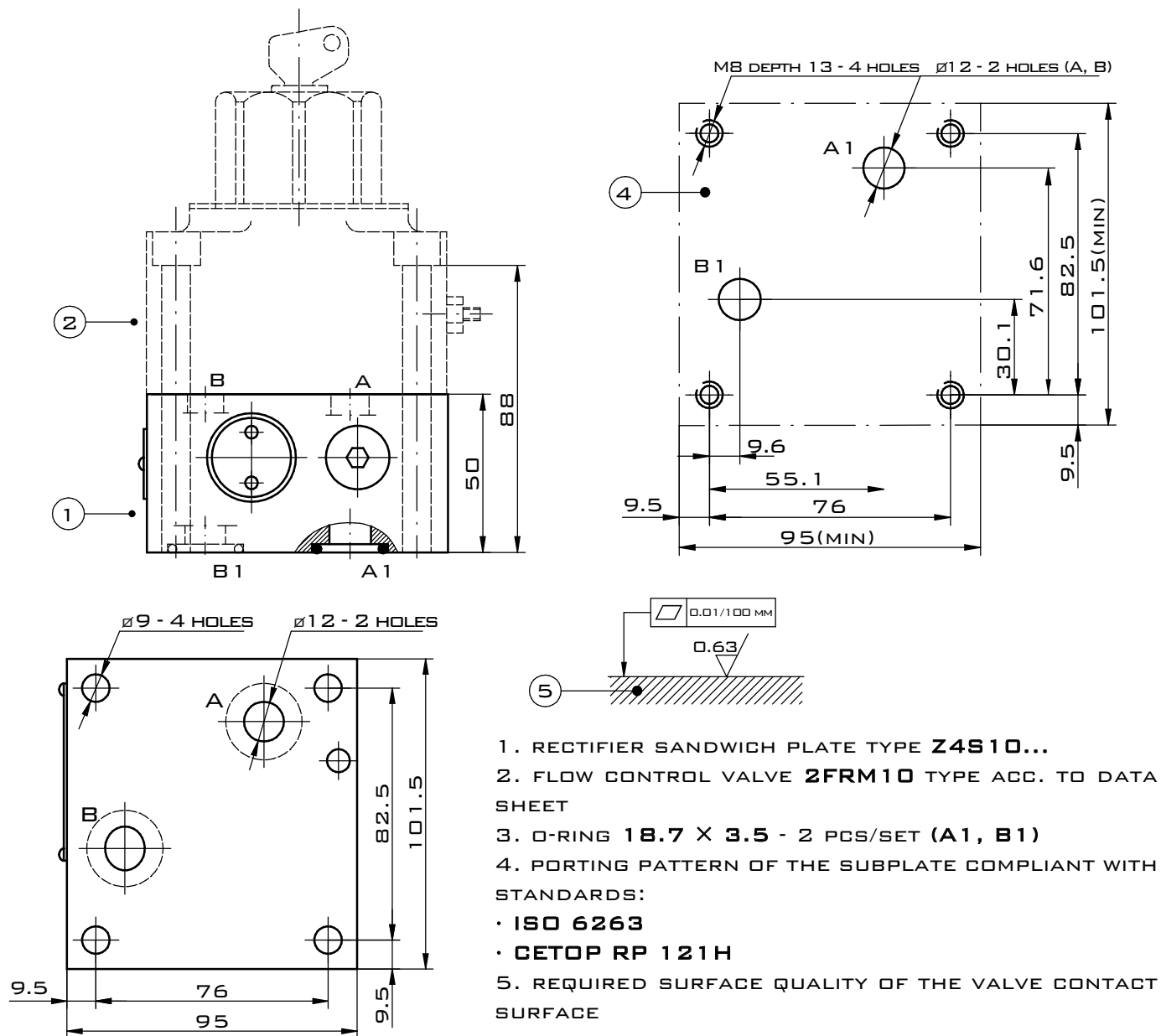
SUBPLATES MUST BE ORDERED IN ACCORDANCE TO THE TYPE OF THE SUBPLATE, TAKING INTO CONSIDERATION DIMENSIONS OF THREADED CONNECTIONS ACCORDING TO DATA SHEET: **G 342/01 - THREADED CONNECTIONS G 3/8**

MOUNTING SCREWS:

FOR MOUNTING RECTIFIER SANDWICH PLATE **Z456...** AND FLOW CONTROL VALVE **2FRM6...**: **M5 X 70 - 10.9** ACC. TO PN - EN ISO 4762 (PN/M-82302) 4 PCS/SET **DELIVERED ON SEPARATE ORDER.**

TIGHTENING TORQUE OF SCREWS $M_D = 9 \text{ NM}$

Z4S10 OVERALL AND CONNECTION DIMENSIONS



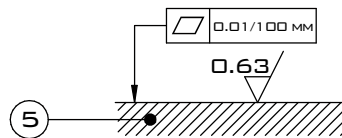
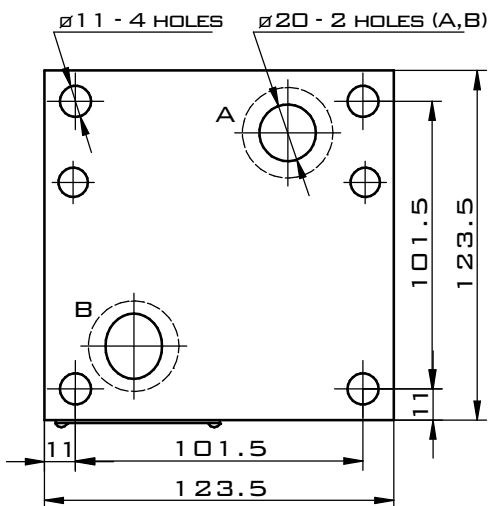
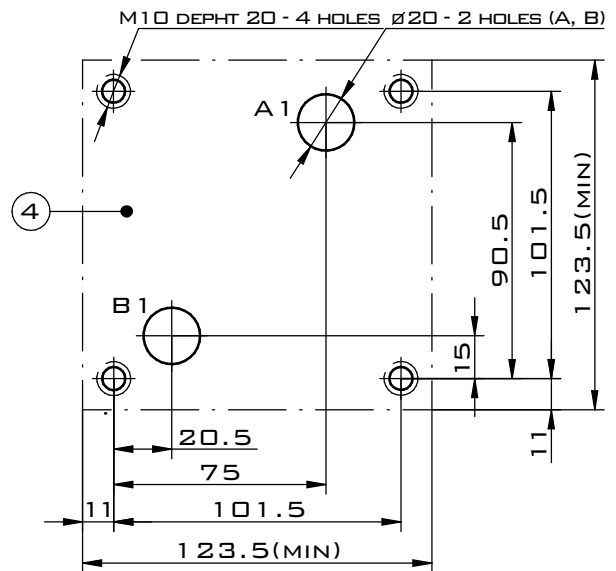
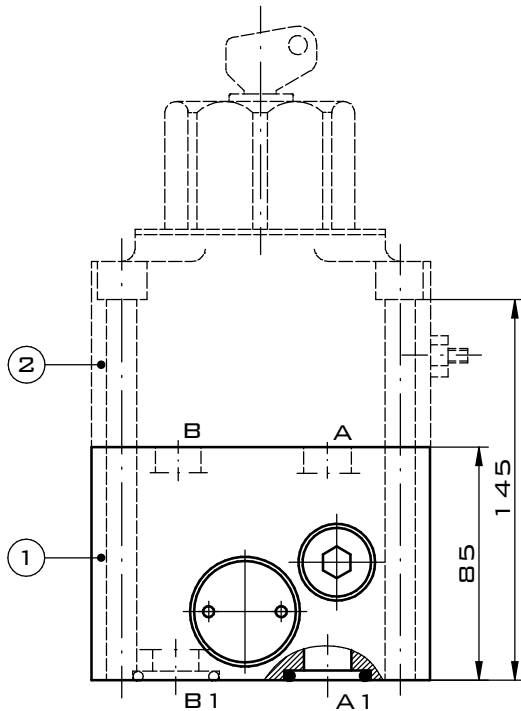
SUBPLATES

SUBPLATES MUST BE ORDERED IN ACCORDANCE TO THE TYPE OF THE SUBPLATE, TAKING INTO CONSIDERATION DIMENSIONS OF THREADED CONNECTIONS ACCORDING TO DATA SHEET:
G 280/01 - THREADED CONNECTIONS G 3/4

MOUNTING SCREWS:

FOR MOUNTING RECTIFIER SANDWICH PLATE **Z4S10**... AND FLOW CONTROL VALVE **2FRM10**...:
M8 X 100 - 10.9 ACC. TO PN - EN ISO 4762 (PN/M-82302) 4 PCS/SET DELIVERED ON SEPARATE ORDER.
 TIGHTENING TORQUE OF SCREWS
 $M_p = 35$ NM.

Z4S16 OVERALL AND CONNECTION DIMENSIONS



1. RECTIFIER SANDWICH PLATE TYPE **Z4S16...**
2. FLOW CONTROL VALVE **2FRM16** TYPE TO DATA SHEET
3. O-RING **26.6 X 3.5** - 2 PCS/SET (**A1, B1**)
4. PORTING PATTERN OF THE SUBPLATE COMPLIANT WITH STANDARDS:
 - **ISO 6263**
 - **CETOP RP 121H**
5. REQUIRED SURFACE QUALITY OF THE VALVE CONTACT SURFACE

SUBPLATES

SUBPLATES MUST BE ORDERED IN ACCORDANCE TO THE TYPE OF THE SUBPLATE, TAKING INTO CONSIDERATION DIMENSIONS OF THREADED CONNECTIONS ACCORDING TO DATA SHEET:
G 282/01 - THREADED CONNECTIONS G 1 1/4

MOUNTING SCREWS:

FOR MOUNTING RECTIFIER SANDWICH PLATE **Z4S16...** AND FLOW CONTROL VALVE **2FRM16...**:
M10 X 160 - 10.9 ACC. TO **PN - EN ISO 4762 (PN/M-82302)** 4 PCS/SET **DELIVERED ON SEPARATE ORDER.**
 TIGHTENING TORQUE OF SCREWS:
M_d = 75 NM.

Z4S

VALVOLE DI FLUSSO



RECTIFIER SANDWICH PLATE

ORDER CODE

Z4S / *

NOMINAL SIZE

NS6 =	6
NS10 =	10
NS16 =	16

SERIES 23 = 23

(20-29) CONNECTION AND INSTALLATION
DIMENSIONS UNCHANGED

FURTHER REQUIREMENTS = *

(TO BE AGREED UPON WITH THE MANUFACTURER)

SEALING

NBR (FOR FLUIDS ON MINERAL OIL BASE) = Ø

FKM (FOR FLUIDS ON PHOSPHATE ESTER BASE) = V