

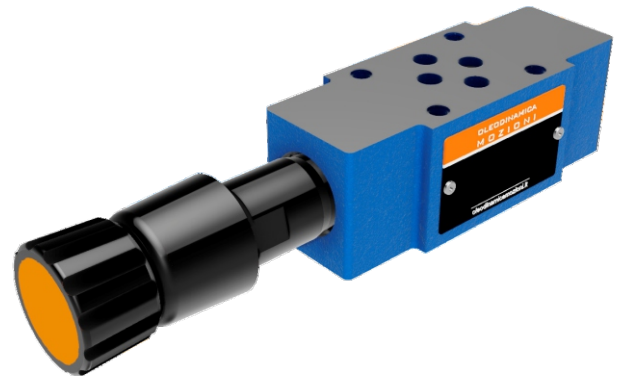


VALVOLE DI PRESSIONE

ZDB6

MODULAR PRESSURE
RELIEF VALVES

ZDB6 IS DIRECT OPERATED PRESSURE RELIEF VALVE FOR MODULAR MOUNTING. THIS SERIES USED TO LIMIT PRESSURE IN HYDRAULIC SYSTEM.

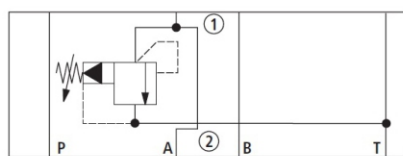


TECHNICAL DATA

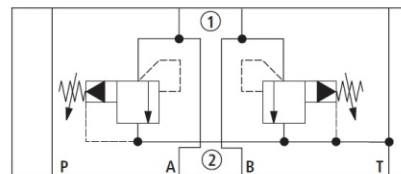
SIZE		6
OPERATING PRESSURE (MPA)		31.5
MAX. FLOW RATE (L/MIN)		60
FLUID TEMPERATURE (°C)		-20 - 70
WEIGHT (KG)	ZDB6	1.3
	Z2DB6	1.9
VALVE BODY (MATERIAL)		CASTING PHOSPHATING SURFACE

SCHEMES

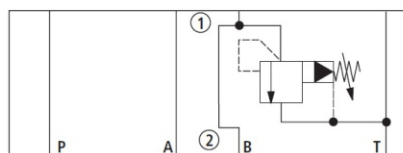
1 = COMPONENT SIDE, 2 = PLATE SIDE



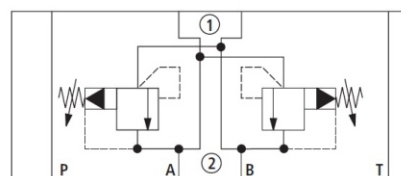
ZDB6VA



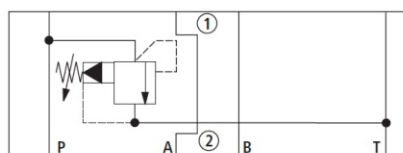
ZDB6VC



ZDB6VB



ZDB6VD

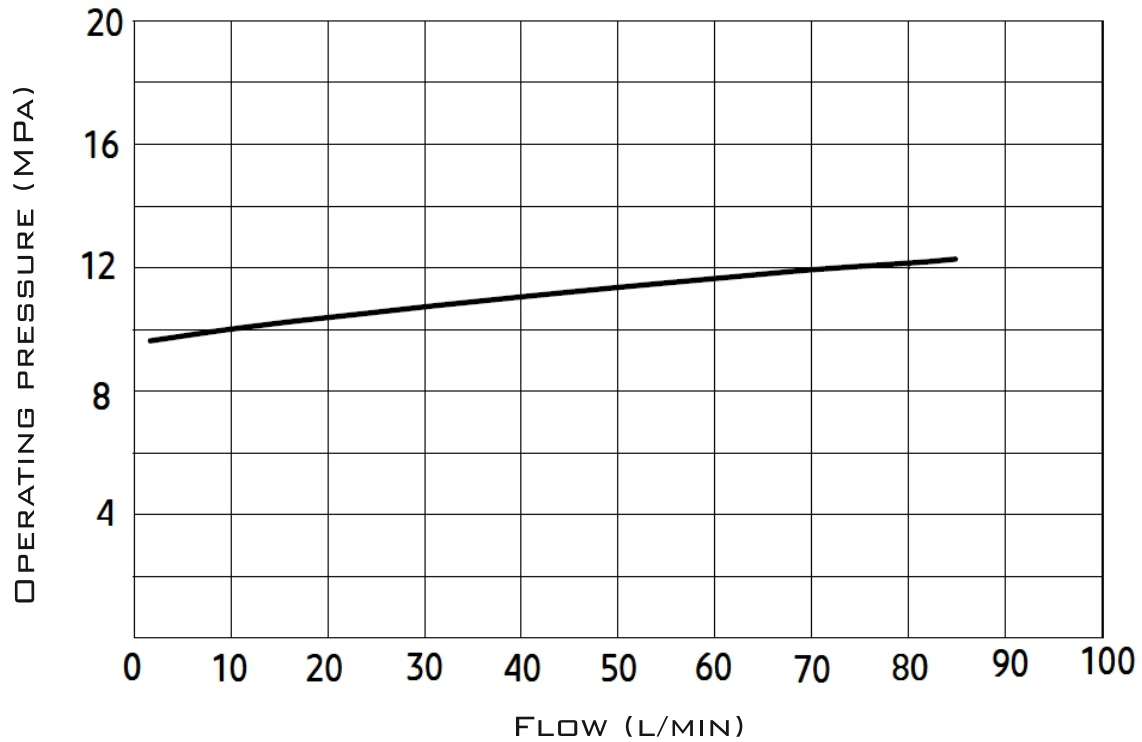


ZDB6VP

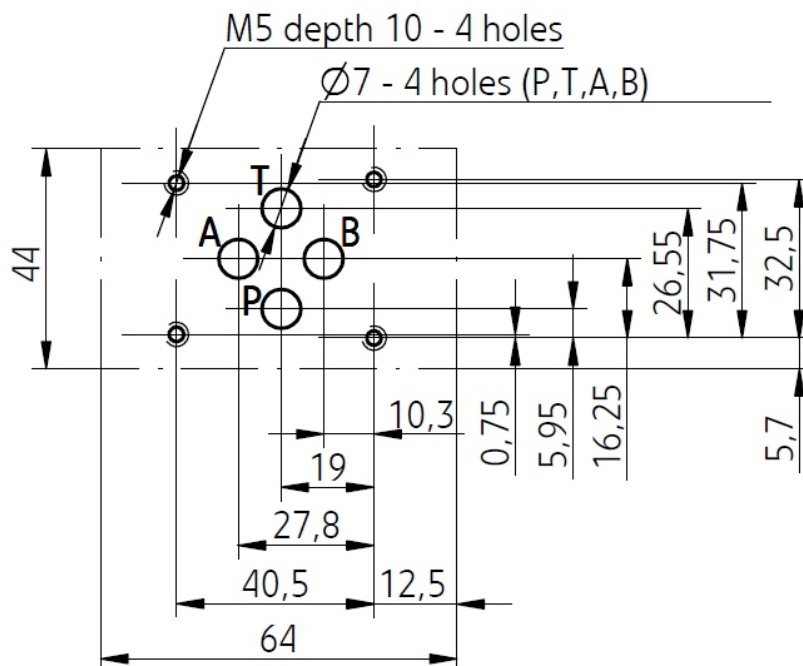


MODULAR PRESSURE
RELIEF VALVES

CHARACTERISTIC CURVES



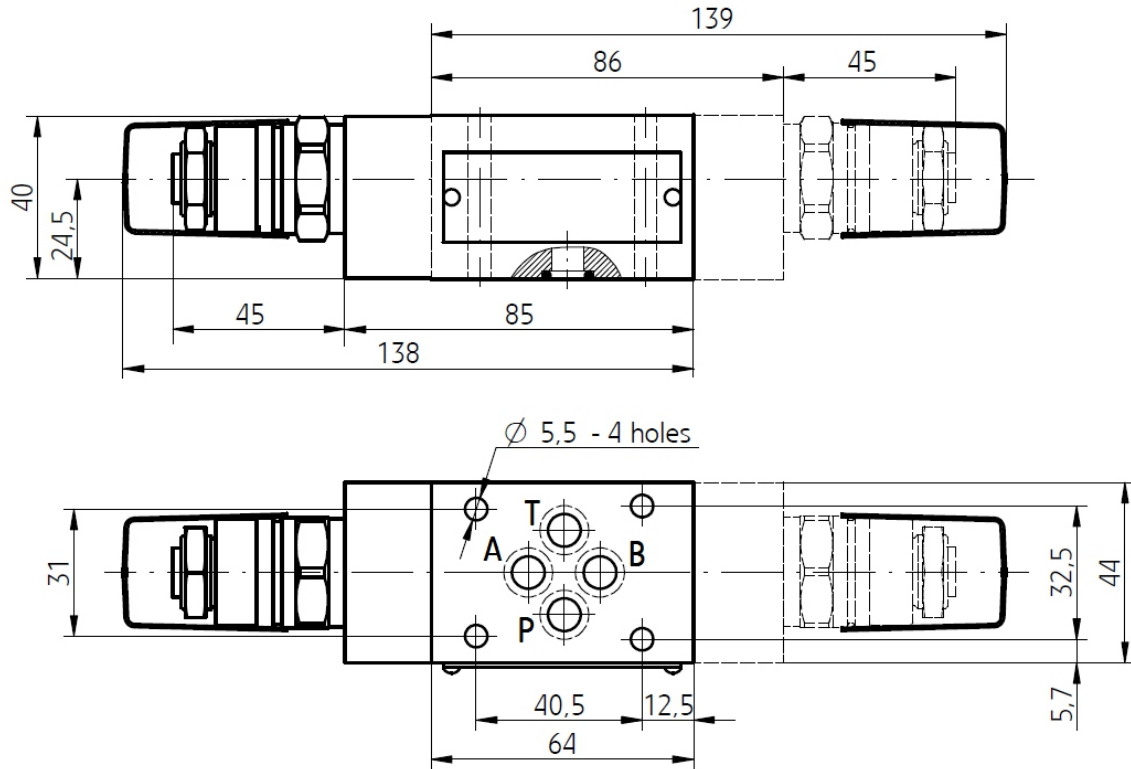
SUBPLATE INSTALLATION DIMENSIONS



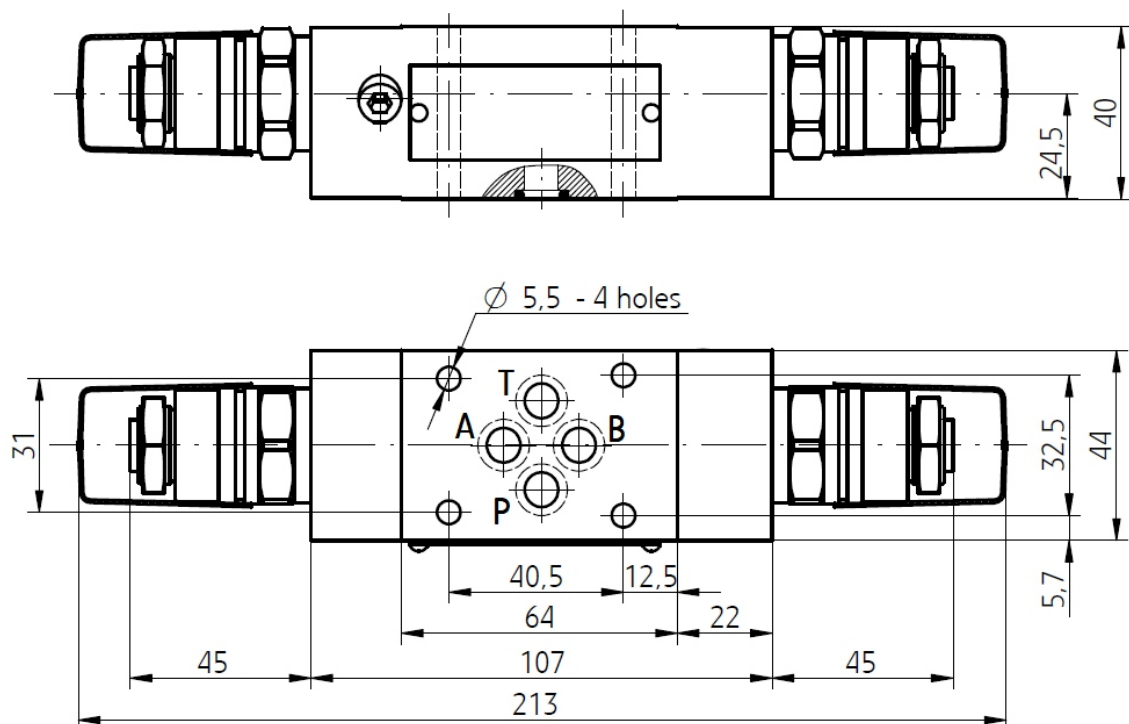
SEE ALSO:
DB, DBD

SUBPLATE INSTALLATION DIMENSIONS

ZDB VA (VB, VP) 2



ZDB VC (VD) 2



ZDB6

VALVOLE DI PRESSIONE



MODULAR PRESSURE
RELIEF VALVES

ORDER CODE

Z		DB	6						
---	--	----	---	--	--	--	--	--	--

Z=MODULAR
MOUNTING

2=JUST APPLICABLE
VC AND VD WITH 2
PLUG IN RELIEF VALVE

6=6 SIZE

A→TA=VA
B→TB=VB
P→TA=VP
A→TA, B→TB=VC
A→B, B→A=VD

NO CODE=NBR SEALS
V=FKM SEALS

50=MAX. PRESSURE 5 MPA
100=MAX. PRESSURE 10 MPA
200=MAX. PRESSURE 20 MPA
315=MAX. PRESSURE 31.5 MPA

40=40 SERIES

1=WITH HANDLE
2=ADJUSTING BOLT WITH
PROTECT COVER
3=LOCKING WITH SCALE
4=KNOB WITH SCALE