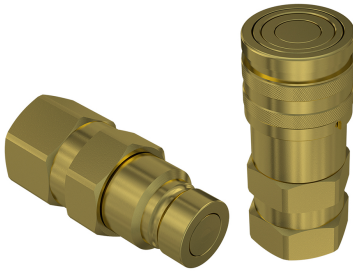


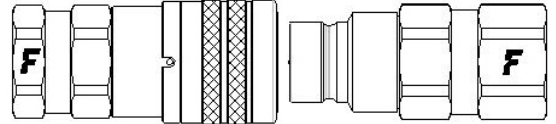
2FFI brass

Flat face couplings, ISO 16028, brass

Flat face couplings, with brass components and seals in FKM (Viton). Suitable for industrial applications. ISO 16028 interchange.



Applications



Technical Specifications

Size (Inch)	Working Pressure (MPa)	Flow Rate (l/min)	Spillage (ml)	Force to Connect (N)	Burst pressure (MPa)		
					Male	Female	Male & Female
1/2	12	100	0,01	220	50	50	50

Seals	FKM
Material	Brass
Valve Type	Flat
Working temperatures	-20 °C to 200 °C
Series Interchange	ISO 16028
Connection	Push to Connect
Disconnection	Sleeve Retraction
Connection Under Pressure	Not Allowed

