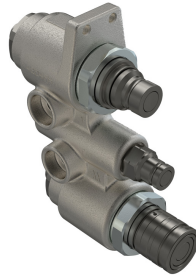


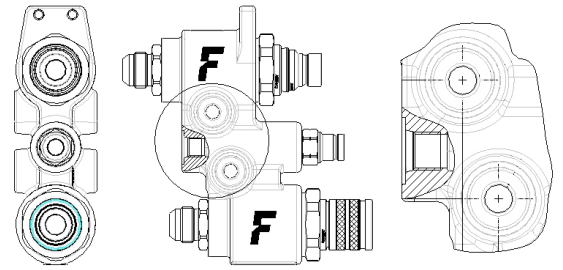
# 4BD4FH

## Castings with couplings for construction equipment

The first cast iron block ever designed allowing a quick connection and disconnection of attachments for skid steer loaders and other construction equipment machines. Cartridges share all the benefits of the FFH series technology. The decompression feature allows to connect the circuit with residual pressure on both ends. Higher flow capability is guaranteed when using 3/4" cartridges instead of 1/2" (both the sizes fit into the same block).



## Applications



## Technical Specifications

Size (Inch)	Working Pressure (MPa)	Flow Rate (l/min)	Spillage (ml)	Force to Connect (N)	Burst pressure (MPa)		
					Male	Female	Male & Female
1/2	35	100	0,01	200	125	125	125
3/4	35	145	0,02	230	125	125	125

Seals	<b>NBR &amp; PUR</b>
Material	<b>Cast Iron &amp; Steel</b>
Valve Type	<b>Flat</b>
Working temperatures	<b>-25 °C to 100 °C</b>
Surface treatment	<b>MATE 500 (CrIII) &amp; MATE 1000 (ZnNi)</b>
Series Interchange	<b>ISO 16028</b>
Connection	<b>Push to Connect</b>
Disconnection	<b>Sleeve Retraction</b>
Connection Under Pressure	<b>Allowed Both Halves up to W.P.</b>

