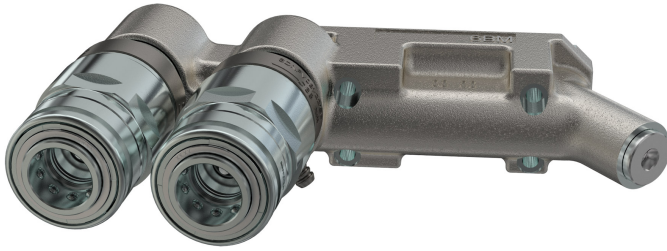
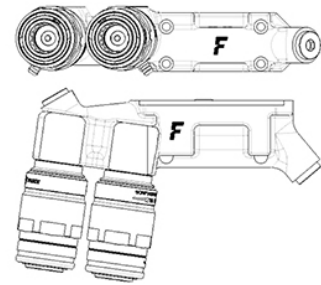


6BM6DNPV

Castings with couplings for agriculture



Applications



Technical Specifications

Size (Inch)	Working Pressure (MPa)	Flow Rate (l/min)	Spillage (ml)	Force to Connect (N)	Burst pressure (MPa)		
					Male	Female	Male & Female
1/2	25	38	1,4	200		100	100

Seals	NBR & PUR
Material	Cast Iron & Steel
Valve Type	Poppet
Working temperatures	-25 °C to 125 °C
Surface treatment	MATE 500 (CrIII)
Series Interchange	ISO 7241-A
Connection	Push to Connect
Disconnection	Pull to Disconnect
Connection Under Pressure	Allowed Male Half up to W.P. and residual in Female Half

