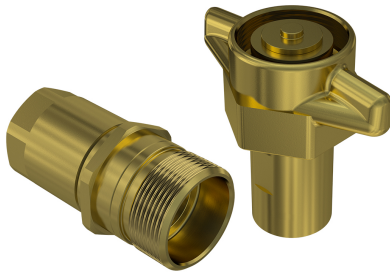


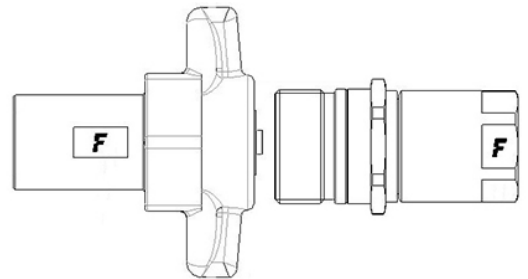
## FB

### Screw-to-connect couplings for road machines applications

Screw-on flat face brass couplings suitable to vehicles and road machines applications. A wing-shaped sleeve helps to connect and disconnect by hand. Interchangeable for US market.



### Applications

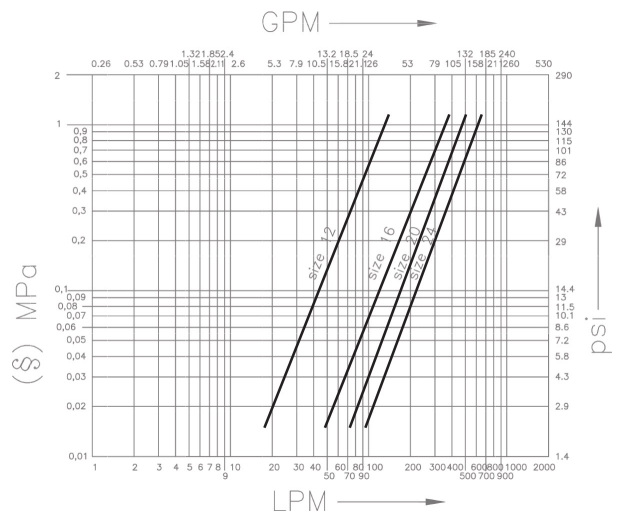


## Technical Specifications

Size (Inch)	Working Pressure (MPa)	Flow Rate (l/min)	Spillage (ml)	Force to Connect (N)	Burst pressure (MPa)		
					Male	Female	Male & Female
3/4	25	62	0,1	0	100	75	82
1	23	160	0,2	0	130	70	80
1-1/4	21	220	0,5	0	78	64	68
1-1/2	20	300	0,7	0	60	60	62

Seals	<b>NBR</b>
Material	<b>Brass</b>
Valve Type	<b>Flat</b>
Working temperatures	<b>-25 °C to 125 °C</b>
Series Interchange	<b>MARKET</b>
Connection	<b>Screw to Connect</b>
Disconnection	<b>Unscrew to Disconnect</b>
Connection Under Pressure	<b>Allowed Residual</b>

### Pressure Drop



Data shown in the diagram are indicative and not binding.  
 (§) 1 MPa = 10 bar. Dash size are specified.