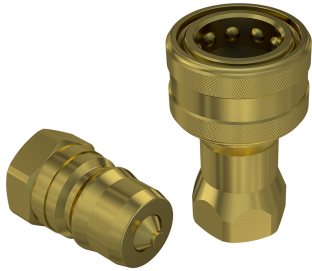


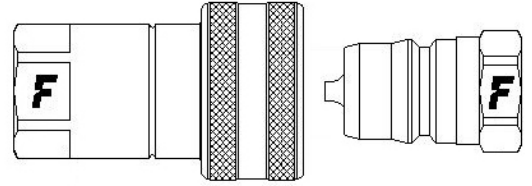
HNV brass

Standard couplings for industrial applications, ISO 7241-B interchange, brass versions

Standard couplings for industrial applications with brass components. Available with NBR or FKM (Viton) seals. ISO 7241 part B interchange.



Applications



Technical Specifications

Size (Inch)	Working Pressure (MPa)	Flow Rate (l/min)	Spillage (ml)	Force to Connect (N)	Burst pressure (MPa)		
					Male	Female	Male & Female
1/8	22	6	0,5	110	90	140	150
1/4	20	16	1	75	80	120	120
3/8	15	25	1,5	78	60	70	100
1/2	17	60	2,8	97	70	90	90
3/4	10	110	10	180	40	50	100
1	14	150	13	180	56	58	80
1-1/2	7	750	80	185	30	33	40

Seals	NBR
Material	Brass
Valve Type	Poppet
Working temperatures	-25 °C to 125 °C
Series Interchange	ISO 7241-B
Connection	Sleeve Retraction
Disconnection	Sleeve Retraction
Connection Under Pressure	Not Allowed

