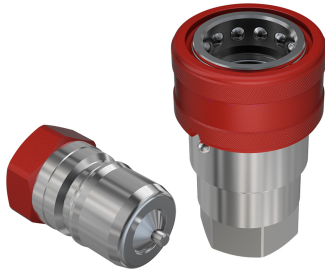


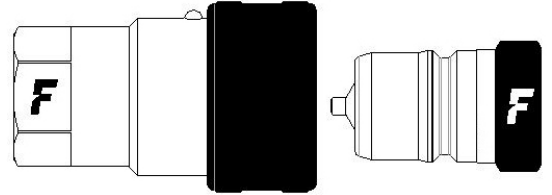
HNVFR

Standard couplings for industrial applications, ISO 7241-B interchange, BOP certified

Special version derived from HNV couplings purposely designed for BOP applications and API certified. Interchangeable according to ISO 7241-B standards.



Applications

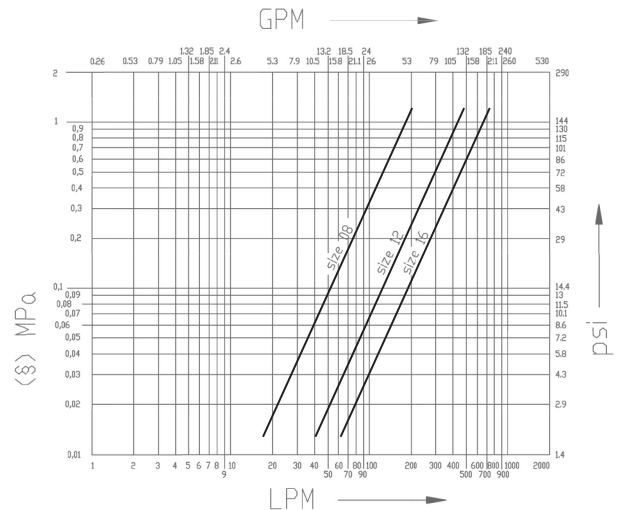


Technical Specifications

Size (Inch)	Working Pressure (MPa)	Flow Rate (l/min)	Spillage (ml)	Force to Connect (N)	Burst pressure (MPa)		
					Male	Female	Male & Female
1/2	21	75	2,8	97	140	140	150
3/4	21	190	10	120	110	100	100
1	23	270	13	180	120	120	120

Seals	SPECIAL
Material	Steel
Valve Type	Poppet
Working temperatures	BOP to BOP
Surface treatment	MATE 500 (CrIII) & Paint
Series Interchange	ISO 7241-B
Connection	Sleeve Retraction
Disconnection	Sleeve Retraction
Connection Under Pressure	Not Allowed

Pressure Drop



Data shown in the diagram are indicative and not binding.
 (§) 1 MPa = 10 bar. Dash size are specified.