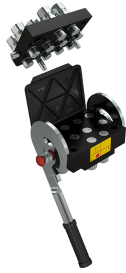
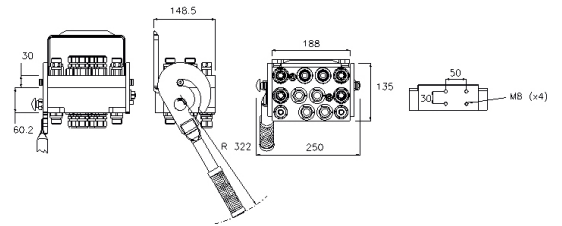


P12A

Multifaster 12 lines



Applications



Seals	NBR & PUR
Material	Aluminium & Stainless Steel & Steel
Valve Type	Flat
Working temperatures	-25 °C to 100 °C
Surface treatment	MATE 500 (CrIII) & Paint
Series Interchange	MULTIFASTER
Connection	Lever
Disconnection	Lever
Connection Under Pressure	Allowed Residual