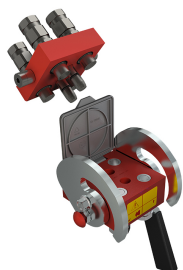


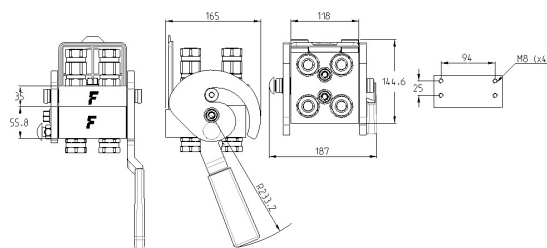
PH408

Multifaster, high pressure version, 4 lines size o8

New multiconnection system specifically designed to withstand high pressure applications (42 MPa). Equipped with 4 lines size o8. Red paint plates and zn-ni surface protection.



Applications



Technical Specifications

Size (Inch)	Working Pressure (MPa)	Flow Rate (l/min)	Spillage (ml)	Force to Connect (N)	Burst pressure (MPa)		
					Male	Female	Male & Female
1/2	46	60	0,01		138	138	138

Seals	NBR & PUR
Material	Aluminium & Steel
Valve Type	Flat
Working temperatures	-25 °C to 100 °C
Surface treatment	MATE 1000 (ZnNi) & Paint
Series Interchange	MULTIFASTER
Connection	Lever
Disconnection	Lever
Connection Under Pressure	Allowed Residual