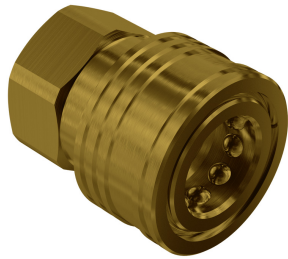


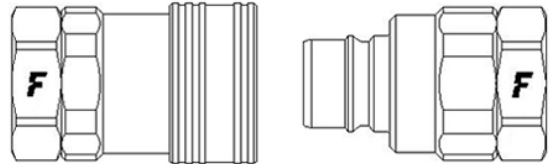
TNL brass

Standard couplings, US interchange, free flow, brass versions

TNL series couplings are commonly used in US market as an alternative to standard series. Assembled without internal valves they have been designed to maximize flow. Fully interchangeable with TNV versions. Brass construction.



Applications



Technical Specifications

Size (Inch)	Working Pressure (MPa)	Flow Rate (l/min)	Spillage (ml)	Force to Connect (N)	Burst pressure (MPa)		
					Male	Female	Male & Female
1	7,5	280	0	100			30
1-1/2	5,5	450	0	150			22

Seals	NBR
Material	Brass
Valve Type	None
Working temperatures	-25 °C to 125 °C
Series Interchange	MARKET
Connection	Sleeve Retraction
Disconnection	Sleeve Retraction
Connection Under Pressure	Not Allowed