

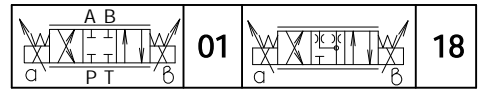
**GENERAL DESCRIPTION**

List: PDCVC5-1-Oct 2015

The RHP10...-...-F... valve is used to control the speed and direction of hydraulic actuators.



**Symbol**



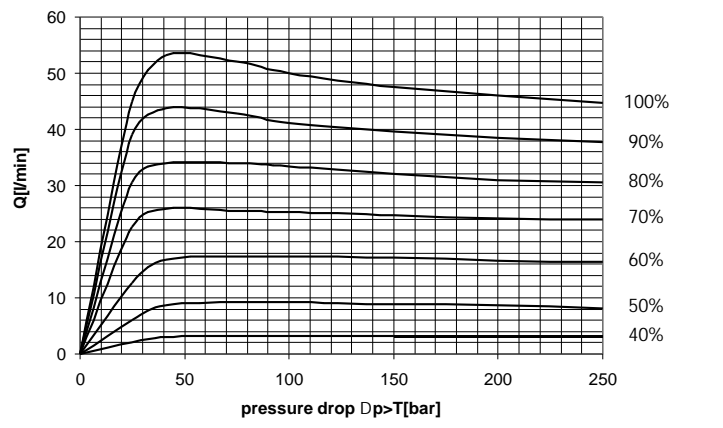
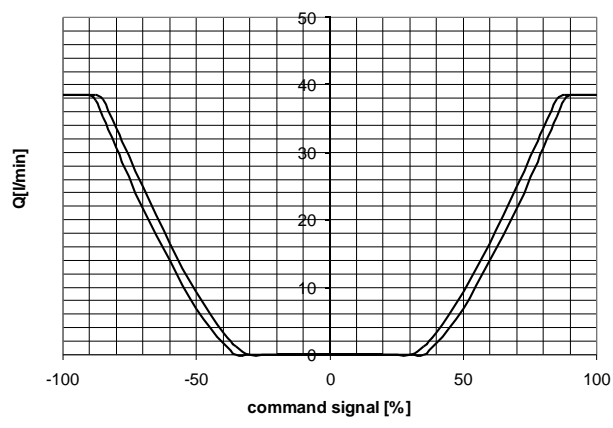
- ✓ 4/3- way directional control valves with proportional solenoid operation without feedback
- ✓ Removable coils-quick replacement and rotation in any direction without leakage from the system
- ✓ Manual override option (push button)
- ✓ Mounting surface CETOP5 (NG10)

**ORDERING CODE**

<b>RHP</b>	<b>10</b>	...	-	<b>38</b>	-	<b>F</b>	...	...
Proportional directional control valve						Climatic realization:		
Nominal size						N - normal		
Functional symbol:						T - tropical		
						Connectors:		
						C1 - without connectors		
						C2 - with connectors without light indicator		
						C3 - with connectors with light indicator		
Nominal flow:			38l/min			Modification		

**CHARACTERISTICS**

Measured at: PWM 100Hz. ,  $I_{max.}=2,5A$  ,  $I_{min.}=0A$  ,  $t=45+5^{\circ}C$



**TECHNICAL DATA**
**GENERAL**

DATA	UNIT	VALUE/RANGE
Installation position		optional , preferably horizontal
Ambient temperature range	°C	-20...+50
Weight double solenoid valve	kg	6,700
Hysteresis	%	< 6
Repeatability	%	±1,5

**HYDRAULIC**

Max. pressure	port P , A & B port T	MPa MPa	32 16
Rated flow (at Dp 0,5MPa. per metering edge)		l/min	38
Hydraulic fluid-mineral oil: -viscosity -filtration degree to acc. ISO 4406 -temperature		mm <sup>2</sup> /s class °C	10...400 18/16/13 -20...80

**ELECTRICAL**

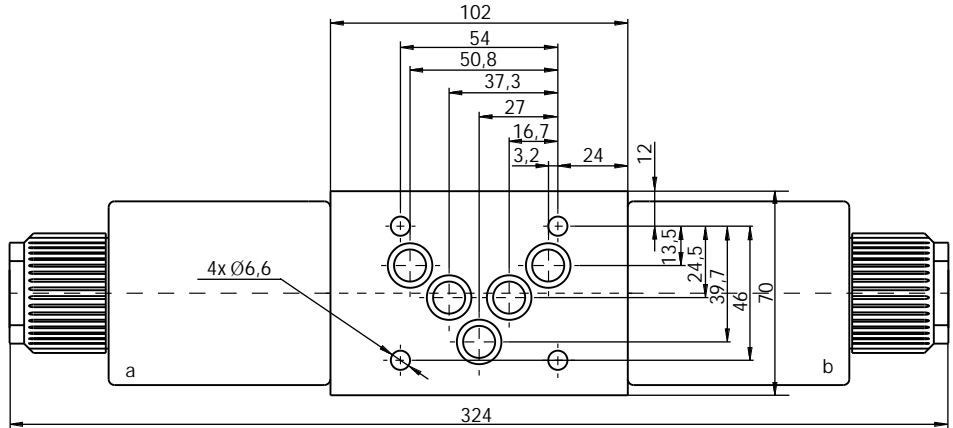
Cyclic duration		%	100
Waterproof			IP65
Heat insulation			H
Coil resistance	cold warm	W	2,2 3
Max current		A	2,5

**AMPLIFIER**
**EDAR 1211-2-25 - Order separately**

These digital amplifier EDAR 1211-2-25 is designed to control direct operated proportional directional control valves without feedback - see "List: EDAR1211-2-25" and "OI:EDAR1211-...".

**DIMENSIONS**

All dimensions are shown in mm.



Gray or white plug connectors for solenoid "a", black connectors for solenoid "b" and transparent for solenoids with light indicator.

Standard fixing bolts M6x40 (10,9 class recommended). Torque 11...14 Nm.

