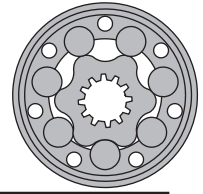




Quality assured company - ISO 9001 certified

**M+S HYDRAULIC**

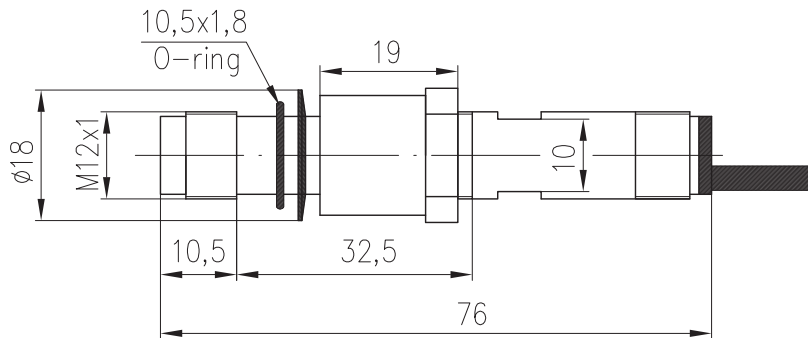
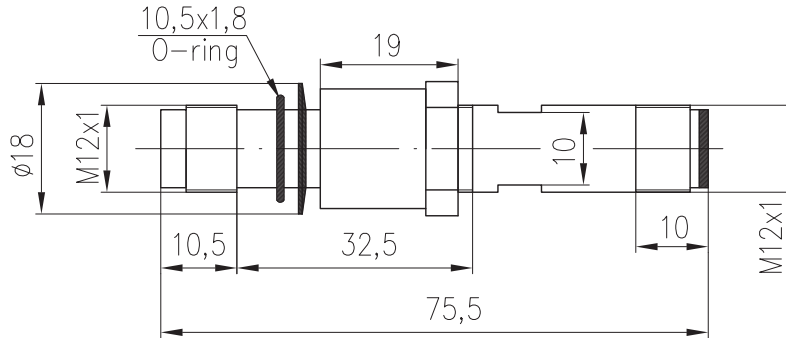


Product Tech News

## Speed Sensor type RS...

### INTRODUCTION

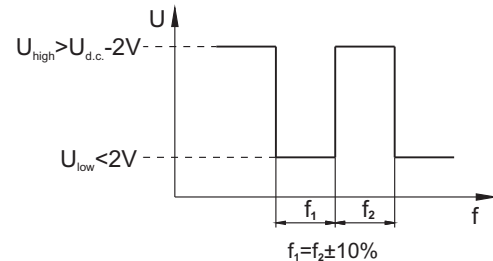
"M+S Hydraulic" introduces new series of Speed sensor type RS...



### Technical data

Frequency range	0...15 000 Hz
Output	Universal PUSH PULL
Power supply	10-30 VDC
Current input	<20 mA (@24 VDC)
Ambient Temperature	-40...+125°C [-40...+257°F]
Protection	IP 67
Plug connector	M12-Series
Mounting principle	ISO 6149

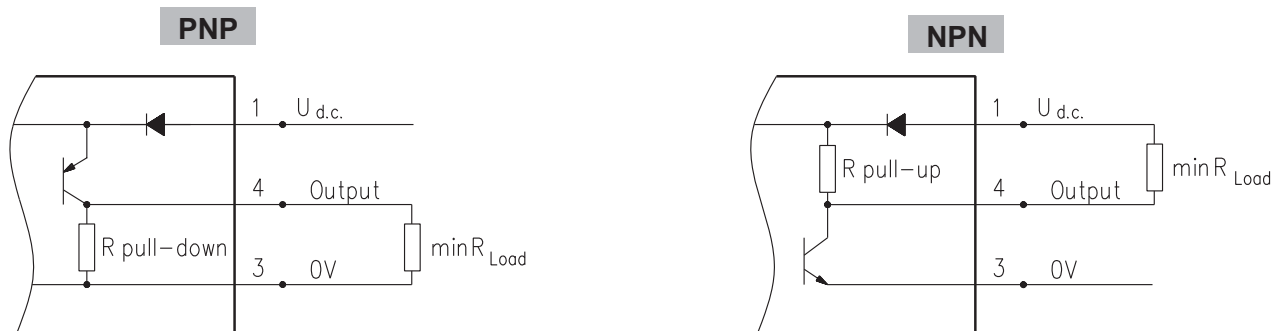
### Output signal



Load max.:  $I_{high} = I_{low} < 50mA$

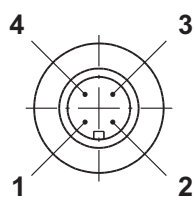
Motor type	MM	MP	MR	MH	MS	MT	MV
Pulses per revolution	30	36	36	42	54	84	102

**Wiring diagrams**



$$R_{Load} [k\Omega] = U_{d.c.} [V] / I_{max} [mA]$$

**Stick type**



Terminal No.	Connection	Cable Output
1	U <sub>d.c.</sub>	Brown
2	No connection	White
3	0V	Blue
4	Output signal	Black

**Order Code for Speed Sensor**

Sensor Code	Electric connection
RS	Connector BINDER 713 series
RSL2,5	Cable output 3x0,25; 2,5 m [98 in] long
RSL3,5	Cable output 3x0,25; 3,5 m [138 in] long
RSL5	Cable output 3x0,25; 5 m [196 in] long
RSL10	Cable output 3x0,25; 10 m [394 in] long

**NOTE:** \*- The speed sensor is not fitted at the factory, but is supplied in a plastic bag with the motor. For installation see enclosed instructions.