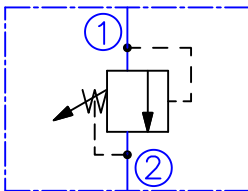


DESCRIPTION

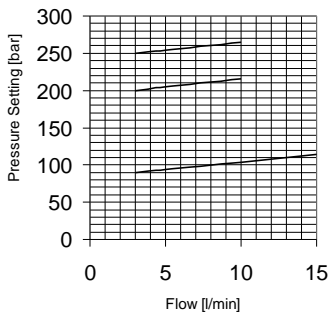
A screw-in , cartridge-style , direct-acting , poppet-type , hydraulic relief valve intended for lower flow circuits requiring low internal leakage.

OPERATION

The RV06-2A blocks flow from 1 to 2 until sufficient pressure is present at 1 to force the spring-opposed poppet from its seat.

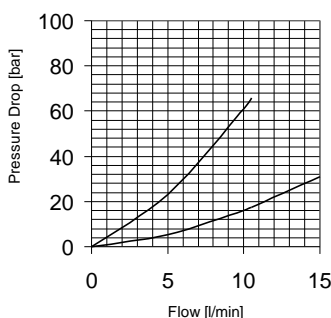
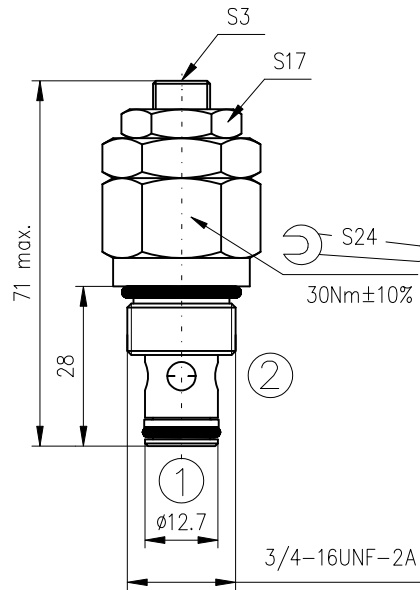
SYMBOL

PERFORMANCE

Cartridge only
32cSt oil at 40°C



The Performance Chart illustrates flow handling capacity at max. setting for each spring range option. Pressure rise will vary with spring (range) and with setting within range due to flow forces.

32cSt oil at 40°C


DIMENSIONS

ORDERING CODE

RV06-2A

Relief valve

Pressure adjustment range:

0...90bar - 8

20...200bar - 16

30...250bar - 25

Seals:

Buna N - N

Viton V - V

TECHNICAL DATA

Operating pressure		250bar
Pressure adjustment range:	RV06-2A8...	0...90 bar
	RV06-2A16...	20...200 bar
	RV06-2A25...	30...250 bar
Rated flow - See Performance Chart		
Internal leakage:		0,25cc/min at 200bar
Working liquid-hydraulic oils with characteristics:		10...400 cSt 0,025 mm -20...+80°C
	-viscosity	
	-degree of filtration	
	-temperature	
Cavity: See "Cavities and bodies" brochure		CC06-2