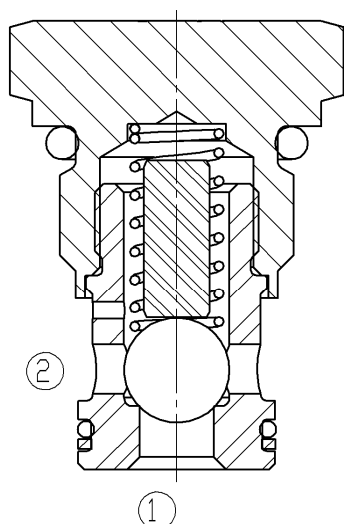


SYMBOL



up to 20 l/min
up to 350 bar

FUNCTION



The check valve RV06A is a direct acting, spring loaded ball valve. In the valve the spring holds the ball in closed position and blocks the flow therefore from port 2 to 1. The valve opens, if the pressure at port 1 is higher than the pressure at port 2 including the spring force.

Check Valve

Ball type

Cartridge-Minivalve – 350 bar

RV06A-01

UNF

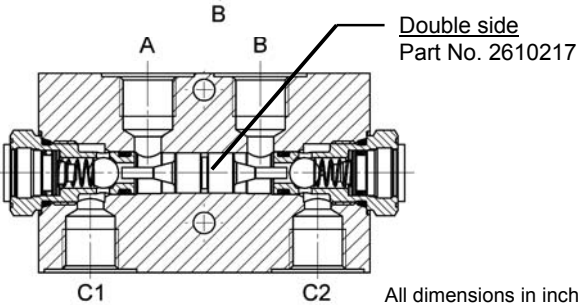
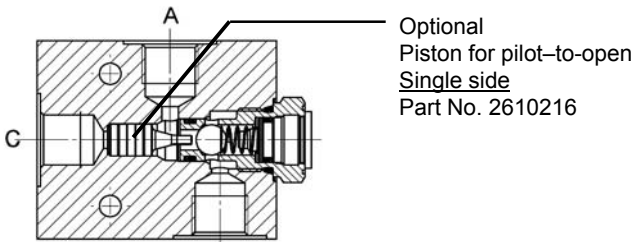
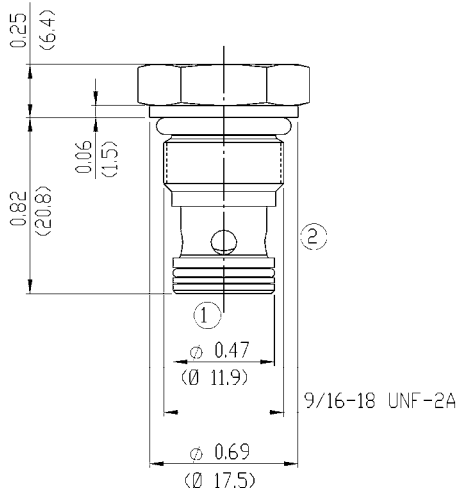
FEATURES

- All exposed surfaces corrosion-proof
- All valve parts made of high-strength steel with hardened and ground components to ensure minimal wear and extend service life
- Superior stability throughout the entire flow range

SPECIFICATIONS

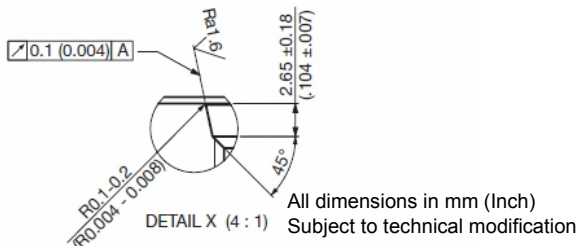
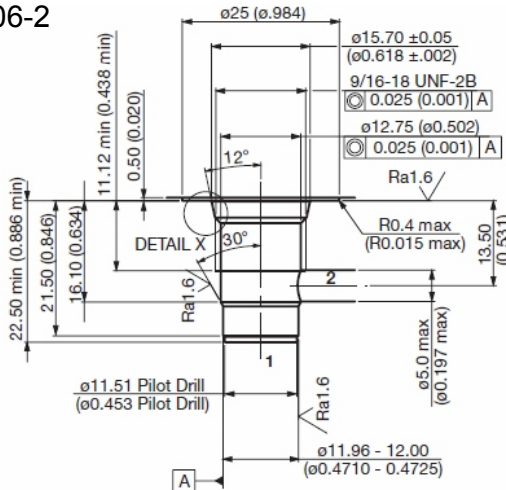
| | |
|---------------------------------------|--|
| Operating pressure: | max. 350 bar |
| Nominal flow: | max. 20 l/min |
| Cracking pressures: | 0,35 bar 2,10 bar |
| Leakage: | leakage-free, < max. 0,35 cm ³ /min at nominal pressure |
| Temperature range of operating fluid: | Min. – 30°C up to max. +100° C |
| Ambient temperature range: | Min. – 30°C up to max. + 60° C |
| Fluid: | Hydraulic fluid to DIN 51524 T1 + T2 |
| Viscosity range: | min. 7,4 mm ² /s up to max. 420 mm ² /s |
| Filtration: | Class 21 / 19 /16 according to ISO 4406 or cleaner |
| Installation: | no orientation restrictions |
| Materials: | Valve body: steel with hardened work surfaces Ball: hardened steel Seals: NBR (Standard) FKM (optional, temperature range -20°C up to +120°C) |
| Cavity: | Back-up rings: TPE-E |
| Weight: | FC06-2 0,045 kg |

DIMENSIONS



All dimensions in inch (mm)
Subject to technical modification

Cavity FC06-2



All dimensions in mm (Inch)
Subject to technical modification

Tools

| Code | Part No. | Image |
|-------------|----------|-------|
| Twist drill | 2582046 | |
| Countersink | 2582047 | |

MODEL CODE

RV06A - 01 - C - N - 30

Basic model
Check valve

Type
01 = Standard

Body & ports
C = cartridge only
*versions in line bodies on request

Seals
N = NBR (Standard)
V = FKM (optional)

Setting
5 = 0.35 bar (5 PSI)
15 = 1.0 bar (15 PSI)
30 = 2.1 bar (30 PSI)
70 = 4.8 bar (70 PSI)

Standard models

| Name | Part No. |
|-----------------|----------|
| RV06A-01-C-N-05 | 2610212 |
| RV06A-01-C-N-30 | 2610154 |

Other types on request

*Line bodies

| Code | Part No. | Material | Ports | Pressure |
|-----------|----------|--------------------|-------|----------|
| FH062-SB2 | 3740528 | steel, zinc plated | G1/4 | 420 bar |
| FH062-AB2 | 3741297 | Alu, anodized | G1/4 | 245 bar |

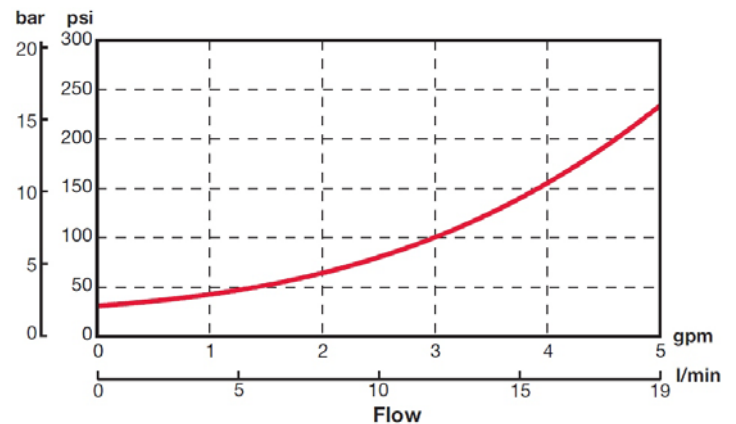
other line bodies on request

Seal kits

| Code | Part No. |
|--------------|----------|
| Seal kit-NBR | 2610184 |
| Seal kit-FKM | 2610185 |

PERFORMANCE

Measured at 28 mm²/s and T oil = 38°C



Annotation

The technical information in this brochure are relating to the operating conditions and applications. At deviant applications and/or operating conditions please contact the technical dept. Technical information are subject to technical modifications.

HYDAC Fluidtechnik GmbH
Justus-von-Liebig-Str. 5
66280 Sulzbach / Saar
Tel.: 06897 / 509 -0
Fax: 06897 / 509 -598
Email: flutec@hydac.com