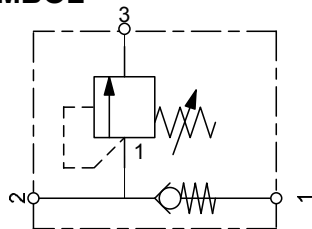
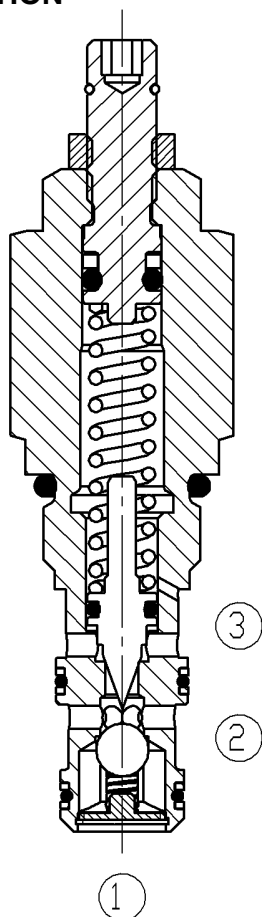


## SYMBOL



up to 20 l/min  
up to 350 bar

## FUNCTION



The check valve RV06C is a direct acting, spring loaded ball valve with integrated pressure relief valve. If there is no flow the spring holds the ball in closed position and blocks therefore flow from port 1 to 2. The check valve opens, if the pressure at port 2 is higher than the pressure at port 1 including the spring force. If the pressures rises in the inlet pipe over the pre-adjusted pressure the relief valve opens to tank. Any pressure at port 3 is additive to the relief pressure setting.

## Check Valve

### Ball type

### with pressure relief function

### Cartridge-Minivalve – 350 bar

### RV06C-01

UNF

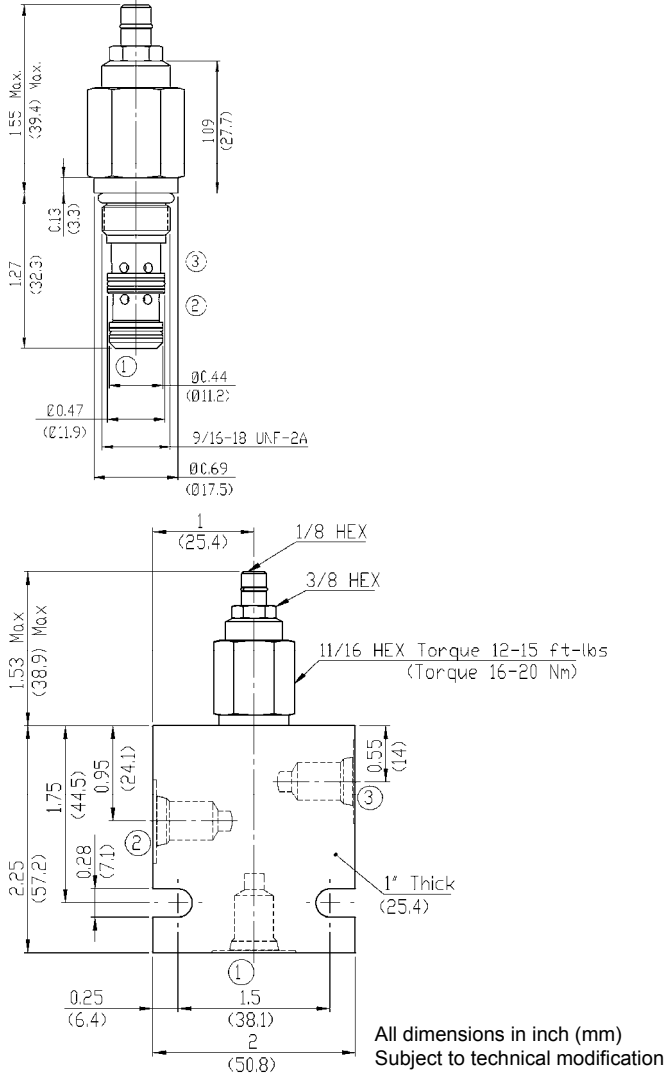
## FEATURES

- All exposed surfaces corrosion-proof
- All valve parts made of high-strength steel with hardened and ground components to ensure minimal wear and extend service life
- Combination of two functions in one valve
- Pressure ranges up to 350 bar
- adjustable under full pressure
- fast closing
- protecting the system and the pump before pressure peaks
- Pressure relief with damped piston making the valve less prone to vibrations

## SPECIFICATIONS

Operating pressure:	max. 350 bar
Nominal flow:	max. 20 l/min
Pressure ranges (DB):	0 up to 125 bar
	0 up to 210 bar
	35 up to 350 bar
	0,35 bar
Cracking pressure (check function):	0,35 bar
Leakage:	leakage-free, < max. 0,35 cm <sup>3</sup> /min at 75% nominal pressure
Temperature range of operating fluid:	Min. – 30°C up to max. +100° C
Ambient temperature range:	Min. – 30°C up to max. + 60° C
Fluid:	Hydraulic fluid to DIN 51524 T1 + T2
Viscosity range:	min. 7,4 mm <sup>2</sup> /s up to max. 420 mm <sup>2</sup> /s
Filtration:	Class 21 / 19 /16 according to ISO 4406 or cleaner
MTTF <sub>d</sub> :	150 years
Installation:	no orientation restrictions
Materials:	Valve body: steel with hardened work surfaces
	Piston: hardened and ground steel
	Seals: NBR (Standard) FKM (optional, temperature range -20°C up to +120°C)
Back-up rings:	TPE-E
Cavity:	FC06-3
Weight:	0,027 kg

**DIMENSIONS**



**MODEL CODE**

**RV06C - 01 - C - N - 180 V 100**

**Basic model**  
Check valve, direct acting

**Type**  
01 = Standard

**Body & ports**  
C = cartridge only  
\*versions in line bodies on request

**Seals**  
N = NBR (Standard)  
V = FKM (optional)

**Pressure range**  
180 = 0 up to 125 bar (1800 PSI)  
300 = 0 up to 210 bar (3000 PSI)  
500 = 35 up to 350 bar (5000 PSI)

**Adjustment option**  
V = adjustable by tool

**Setting**  
none = 50% of max. Pressure  
100 = 69 bar (1000 PSI) – factory preset pressure

**Standard models**

Name	Part No.
RV06C-01-C-N-180V	2610323
RV06C-01-C-N-300V	2610325
RV06C-01-C-N-400V	2610343
Other types on request	

**\*Line bodies**

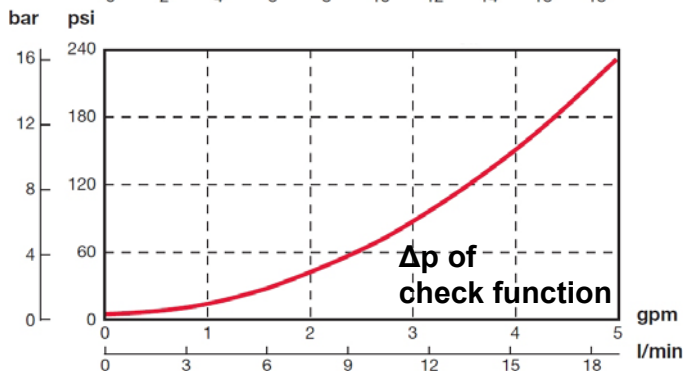
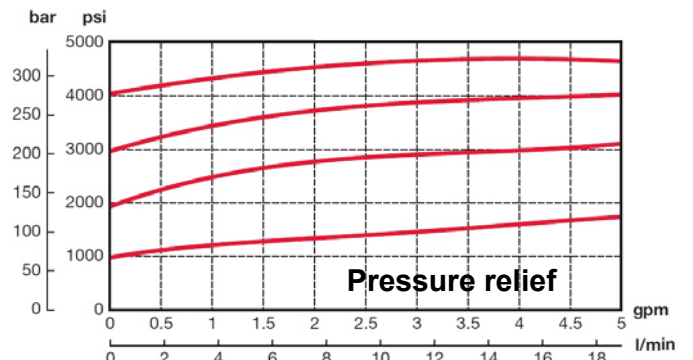
Code	Part No.	Material	Ports	Pressure
FH063-SB2	3740562	steel, zinc plated	G1/4	420 bar
FH063-AB2	3741286	Alu, anodized	G1/4	245 bar
other line bodies on request				

**Seal kits**

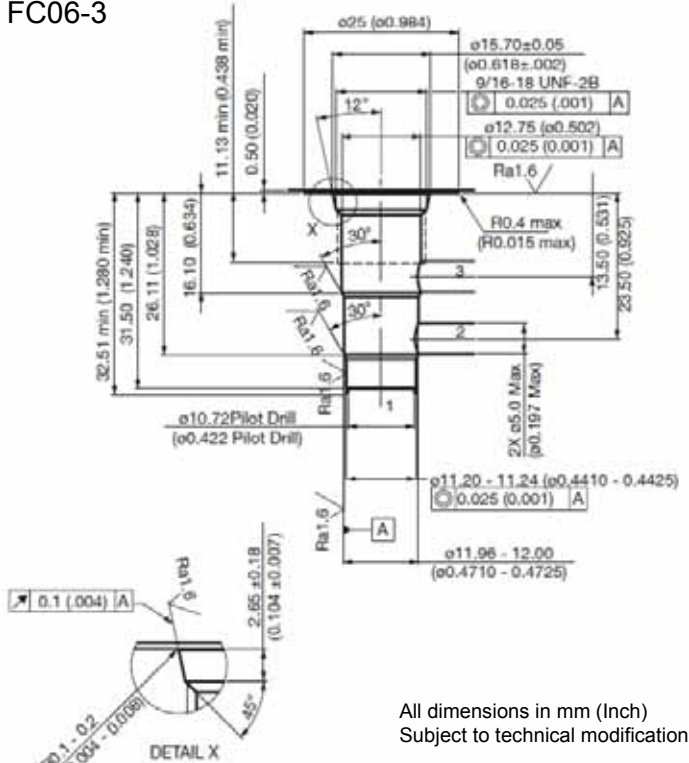
Code	Part No.
Seal kit-NBR	2610186
Seal kit-FKM	2610187

**PERFORMANCE**

Measured at 28 mm<sup>2</sup>/s and T oil = 38°C



**Cavity  
FC06-3**



**Tools**

Code	Part No.
Twist drill	2582050
Countersink	2582051



HYDAC Fluidtechnik GmbH  
Justus-von-Liebig-Str. 5  
66280 Sulzbach / Saar  
Tel.: 06897 / 509-0  
Fax: 06897 / 509-598  
Email: flutec@hydac.com