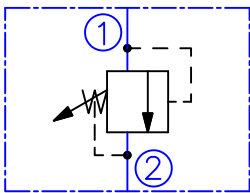


**DESCRIPTION**

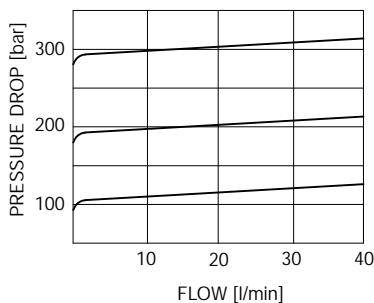
A screw-in , cartridge-style , direct-acting , poppet-type , hydraulic relief valve intended for medium flow circuits requiring low internal leakage.

**OPERATION**

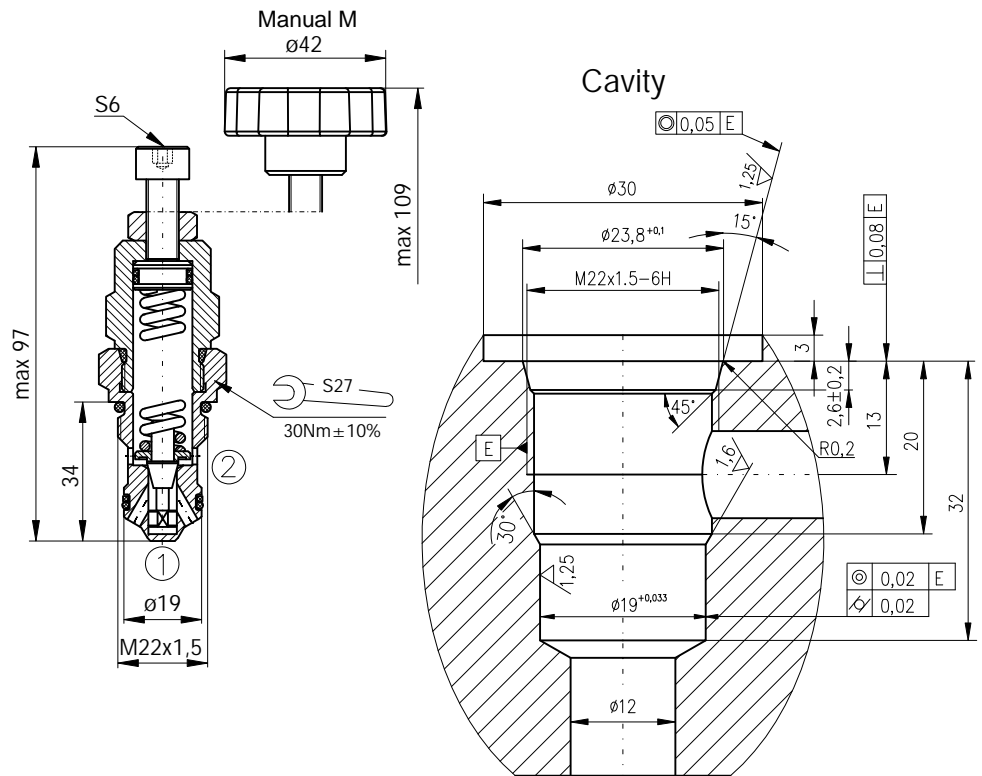
The RV22-2A blocks flow from 1 to 2 until sufficient pressure is present at 1 to force the spring-opposed poppet from its seat.

**SYMBOL**

**PERFORMANCE**

Cartridge only  
32cSt oil at 40°C



The Performance Chart illustrates flow handling capacity at max. setting for each spring range option. Pressure rise will vary with spring (range) and with setting within range due to flow forces.

**DIMENSIONS**

**ORDERING CODE**

RV22-2A ... ..

Relief valve

Pressure adjustment range:

8...100bar - 100  
15...210bar - 210  
15...315bar - 300

Adjustment:

Hexagon screw - omit  
Manual - M

Seals:  
N - Buna  
V - Viton

**TECHNICAL DATA**

Max. operating pressure		315bar
Pressure adjustment range:	RV22-2A100...	8...100 bar
	RV22-2A210...	15...210 bar
	RV22-2A300...	15...315 bar
Rated flow - See Performance Chart		
Working liquid-hydraulic oils with characteristics: -viscosity -degree of filtration -temperature		10...400 cSt 0,025 mm -20...+80°C