

Throttle check valve

Type SD700/SDRV700

NG 6 / 700 bar
up to 25 l/min

Features

- Adjustable while under pressure
- High-precision control
- Bi-directional flow



Design

- Cartridge alone or in manifolds
- The valve setting can be locked by a counter nut

Applications

- Moving speed of the customer can be influenced with the valves
- Throttle valves for inlet and outlet throttling
- Throttle check valves as screw/in cartridge or intermediate plate valve (for applications where the flow shall be throttled in one direction and be un-throttled in the other direction)
- Check valves as screw/in cartridge or intermediate plate valve



Technical data

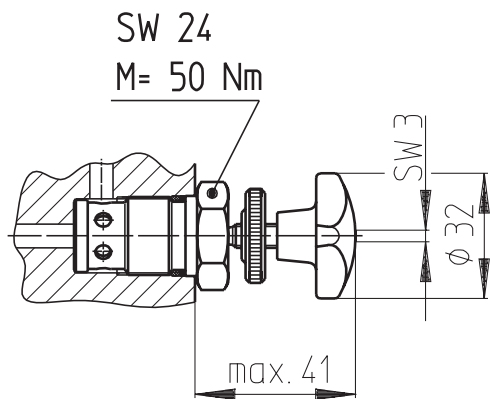
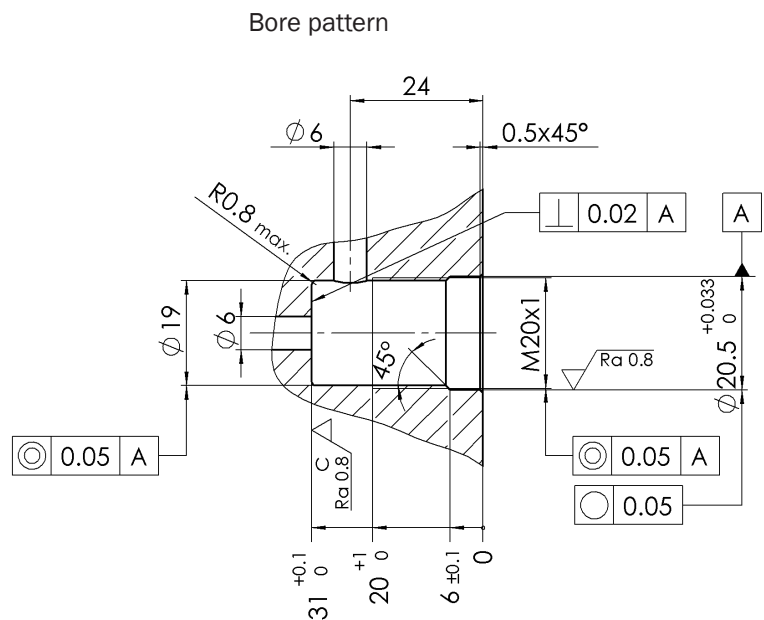
Hydraulic fluid	Mineral oil according to DIN 51524 (other fluids on request)	
Fluid temperature range	-20 to 80 °C	
Ambient temperature range	-30 to 50 °C	
Viscosity range	5 to 400 mm ² /s	
Porting	NG 6 according to DIN 24340 / ISO 4401:2005 / CETOP RP 121 H	
Max. operating pressure port P, A and B	700 bar	
Max. operating pressure port T	350 bar	
Max. flow rate	25 l/min	
Filtration (recommendation)	According to NAS 1638, class 6 resp. ISO/DIN 4406 class 17/15/12	
Weight	See type table	
Materials	Steel parts:	galvanized, black chromated
	Cartridge:	steel
	Supporting ring:	cast iron

Key sheet

Example		SDRV	700	-	6	-	AABB	-	Z	-	V	-	A		00
Throttle valve		SD													
Throttle check valve		SDRV													
Type		BV700													
Port size		6													
Throttle valve SD E Cartridge PP Throttle valve in P AA Throttle valve in A BB Throttle valve in B Throttle check valve SDRV AA Throttle check valve in A BB Throttle check valve in B AABB Throttle check valve in A and B															
Direction of throttling X For throttle valve Z Outgoing throttling A Return throttling															
Seal material		V [FPM] other seal materials on request													
Special design 01 ... 99 (00 for standard)															
Part index Please leave blank (small letters a-d; different letters do not effect interchangeability)															
Desing revision Capital letters A-Z; identical letters equal same connecting dimensions															

Cartridge throttle valve

Type code	Part No.	Weight [kg]
SD700-6-E-X-V-A*00	3677847	0,12

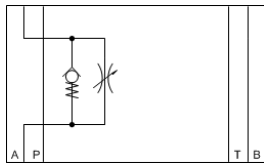
Hydraulic schematic**Dimensional drawing****Bore dimensions****Cartridge check valve**

See documentation ZP700/BL700/RV700

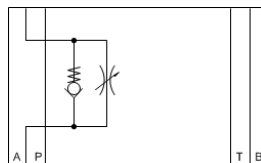
Throttle check valves

Type code	Part No.	Weight [kg]
SDRV700-6-AA-A-V-A*00	3677850	1,9
SDRV700-6-AA-Z-V-A*00	4003008	1,9

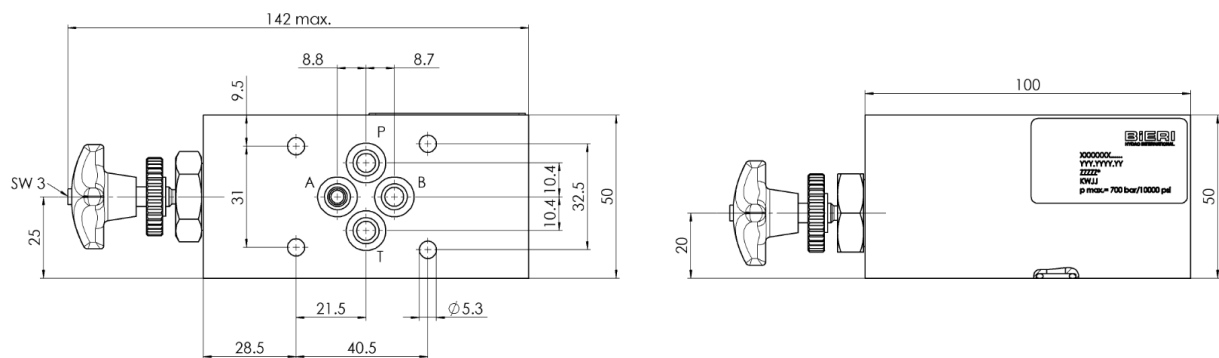
Hydraulic schematic A (Return throttling)



Hydraulic schematic Z (Outgoing throttling)



Dimensional drawing



Type SD700 / SDRV700

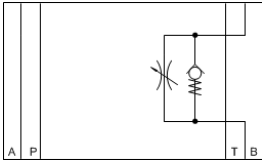
NG 6 / 700 bar
up to 25/min

Type SD700 / SDRV700

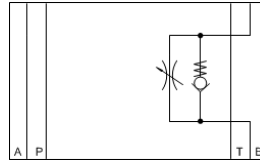
NG 6 / 700 bar
up to 25/min

Type code	Part No.	Weight [kg]
SDRV700-6-BB-A-V-A*00	3677853	1,9
SDRV700-6-BB-Z-V-A*00	4003009	1,9

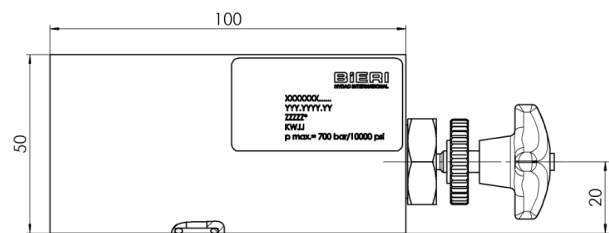
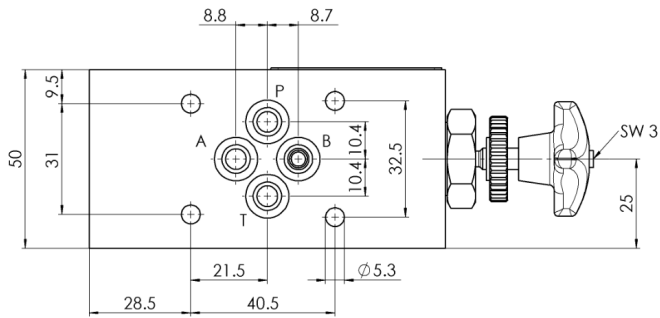
Hydraulic schematic A (Return throttling)



Hydraulic schematic Z (Outgoing throttling)

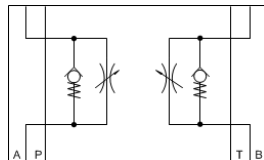


Dimensional drawing

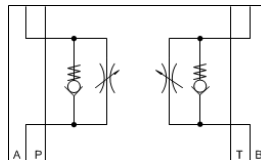


Type code	Part No.	Weight [kg]
SDRV700-6-AABB-A-V-A*00	4003013	1,9
SDRV700-6-AABB-Z-V-A*00	3823668	1,9

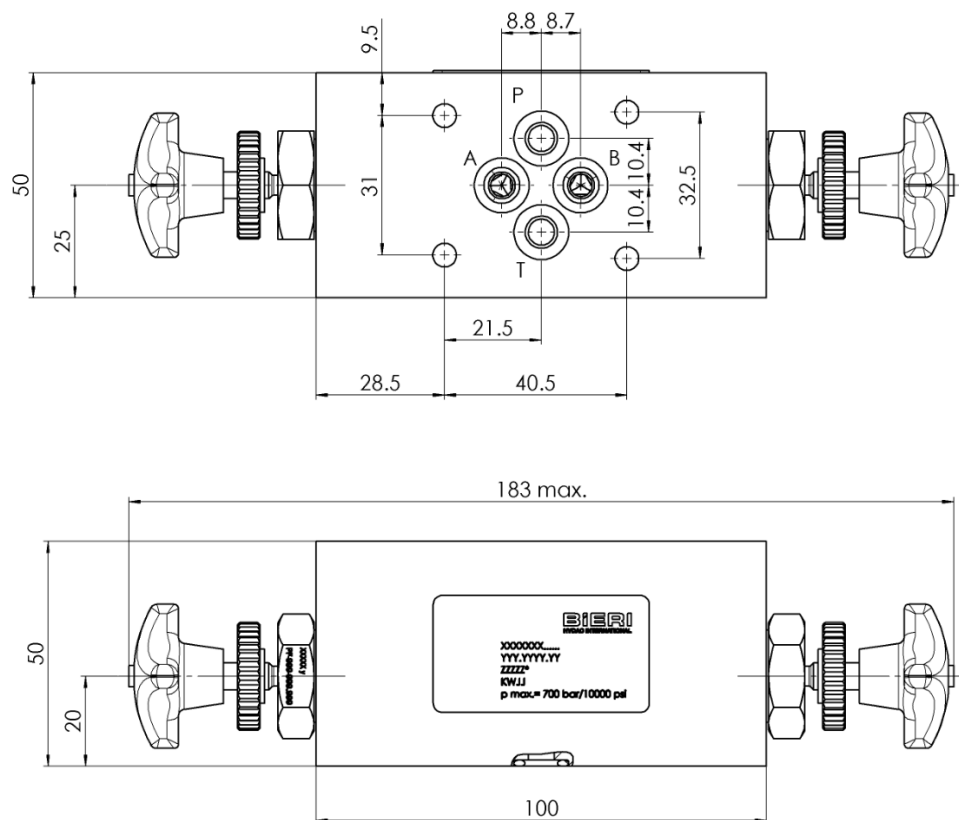
Hydraulic schematic A (Return throttling)



Hydraulic schematic Z (Outgoing throttling)



Dimensional drawing



Characteristics $\Delta p(Q)$

