

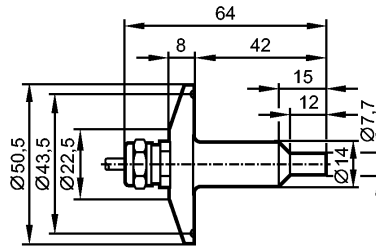


SF0516

SFG14ZBB/6M



Flow sensors



Product characteristics

Flow sensor for connection to evaluation units

Cable

Process connection: Clamp ISO 2852 DN25

Hygienic fitting

Application

Application: high temperature, hygienic applications

Pressure rating [bar]: 30

Medium temperature Liquids [°C]: 0...120

Medium temperature Gases [°C]: 0...100

Electrical data

Connection to control monitor: VS3000

Measuring / setting range

Liquids

Setting range [cm/s]: 3...300

Greatest sensitivity [cm/s]: 3...60

Gases

Setting range [cm/s]: 200...2000

Greatest sensitivity [cm/s]: 200...800

Accuracy / deviations

Max. temperature gradient of medium [K/min]: 15

Reaction times

Response time [s]: 1...10

Environment

Protection: IP 67

Tests / approvals

Shock resistance: DIN IEC 68-2-27: 40 g (11 ms)

Vibration resistance: DIN IEC 68-2-6: 10 g (55...2000 Hz)

MTTF [Years]: 8648

Mechanical data

Process connection: Clamp ISO 2852 DN25

Materials (wetted parts): stainless steel 316Ti / 1.4571

Housing materials: stainless steel 316Ti / 1.4571

Probe length L [mm]: 42

Weight [kg]: 0.487



SF0516

SFG14ZBB/6M



Flow sensors

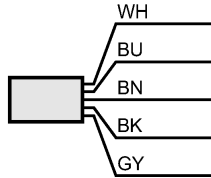
Electrical connection

Connection	silicone-sheated cable / 6 m; 5 x 0.34 mm ²
Max. cable length [m]	100 (5 x 0.5mm ²)

Wiring

Core colors

- BN brown
- BU blue
- BK black
- WH white
- GY grey



Remarks

Remarks	The 3-A qualification is only valid if adapters with 3-A qualification are used for installation.
Pack quantity [piece]	1