

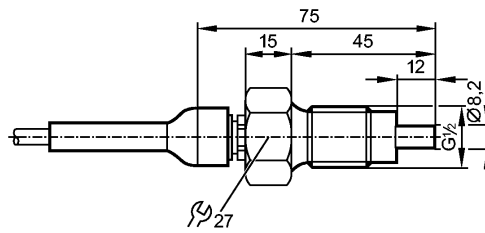


# SF311A

SFR12ADB/1/2G /6M



Flow sensors



## Product characteristics

Flow sensor for connection to evaluation units

Threaded type

Cable

Process connection: G 1/2 A

Ambient temperature -20...60 °C

ATEX approval

Group II, category 1/2G

Zone 0 / Zone 1

## Application

Application liquids and gases

Pressure rating [bar] 300

Medium temperature [°C] -20...60

## Electrical data

Connection to control monitor VS2000 Exi (PTB 01 ATEX 2075)

## Measuring / setting range

Liquids

Setting range [cm/s] 3...300

Greatest sensitivity [cm/s] 3...60

Gases

Setting range [cm/s] 200...2000 \*)

Greatest sensitivity [cm/s] 200...800 \*)

## Accuracy / deviations

Max. temperature gradient of medium [K/min] 15

## Reaction times

Response time [s] 1...10

## Environment

Protection IP 67

## Tests / approvals

Approval DMT 03 ATEX E 090 X  
TIIS TC17434  
IECEX BVS 11.0017 X

Marking of the unit II 1/2G Ex ia IIC T4 Ga/Gb4

Shock resistance DIN IEC 68-2-27: 40 g (11 ms)

Vibration resistance DIN IEC 68-2-6: 10 g (55...2000 Hz)

MTTF [Years] 8648

## Safety classification



# SF311A

SFR12ADB/1/2G /6M



Flow sensors

Internal capacitance	[nF]	1.2
Internal inductance	[μH]	6
Temperature class		T4

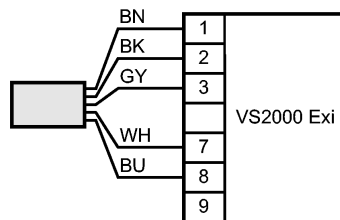
Mechanical data		
Process connection		G ½ A
Materials (wetted parts)		stainless steel 316L / 1.4404
Housing materials		stainless steel 316L / 1.4404
Probe length L	[mm]	12
Installation length EL	[mm]	45
Weight	[kg]	0.458

Electrical connection		
Connection		TPE-S cable / 6 m; 5 x 0.34 mm <sup>2</sup>
Max. cable length	[m]	100 (5 x 0.5mm <sup>2</sup> )

### Wiring

Core colors

- BN brown
- BU blue
- BK black
- WH white
- GY grey



### Remarks

Remarks	In principle, the type test according to 94/9/EC (ATEX) only takes atmospheric conditions (0.8...1.1 bar) into account. For pressures outside this range use must be assessed and approved by the user. Adhere to the operating instructions and the type test certificate. *) referred to air
---------	---

Pack quantity	[piece]	1
---------------	---------	---