

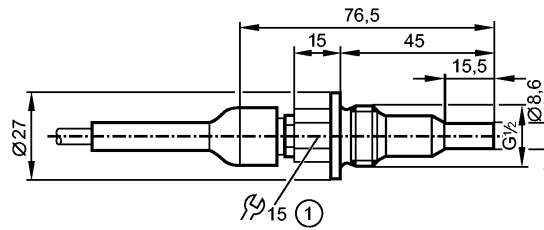


SF323A

SFR12XBK/2G /6M



Flow sensors



1: tightening torque max. 30 Nm



Product characteristics

Flow sensor for connection to evaluation units

Threaded type

Cable

Process connection: G 1/2 A

Ambient temperature -20...70 °C

ATEX approval

Group II, category 2G

Application

Application Aggressive liquid media

Pressure rating [bar] 30

Medium temperature [°C] 5...70

Electrical data

Connection to control monitor VS2000 Exi (PTB 01 ATEX 2075)

Measuring / setting range

Liquids

Setting range [cm/s] 3...60

Greatest sensitivity [cm/s] 3...40

Gases

Setting range [cm/s] -

Greatest sensitivity [cm/s] -

Accuracy / deviations

Max. temperature gradient of medium [K/min] 7

Reaction times

Response time [s] 2...20

Environment

Protection IP 67

Tests / approvals

Approval DMT 03 ATEX E091
IECEX BVS 06.0007

Marking of the unit II 2G Ex ia IIC T4 Gb

Shock resistance DIN IEC 68-2-27: 40 g (11 ms)

Vibration resistance DIN IEC 68-2-6: 10 g (55...2000 Hz)

MTTF [Years] 7927

Safety classification

Internal capacitance [nF] 1.2



SF323A

SFR12XBK/2G /6M



Flow sensors

Internal inductance	[μH]	6
Temperature class		T4

Mechanical data

Process connection		G ½ A
Materials (wetted parts)		ceramics (99.7 % Al2 O3)
Housing materials		ceramics (99.7 % Al2 O3)
Probe length L	[mm]	30
Installation length EL	[mm]	45
Weight	[kg]	0.356

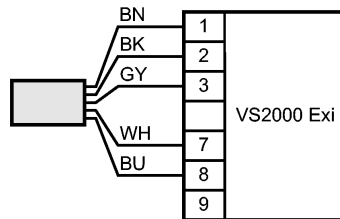
Electrical connection

Connection		TPE-S cable / 6 m; 5 x 0.34 mm²
Max. cable length	[m]	100 (5 x 0.5mm²)

Wiring

Core colors

- BN brown
- BU blue
- BK black
- WH white
- GY grey



Remarks

Remarks	In principle, the type test according to 94/9/EC (ATEX) only takes atmospheric conditions (0.8...1.1 bar) into account. For pressures outside this range use must be assessed and approved by the user. Adhere to the operating instructions and the type test certificate.
---------	---

Pack quantity	[piece]	1
---------------	---------	---