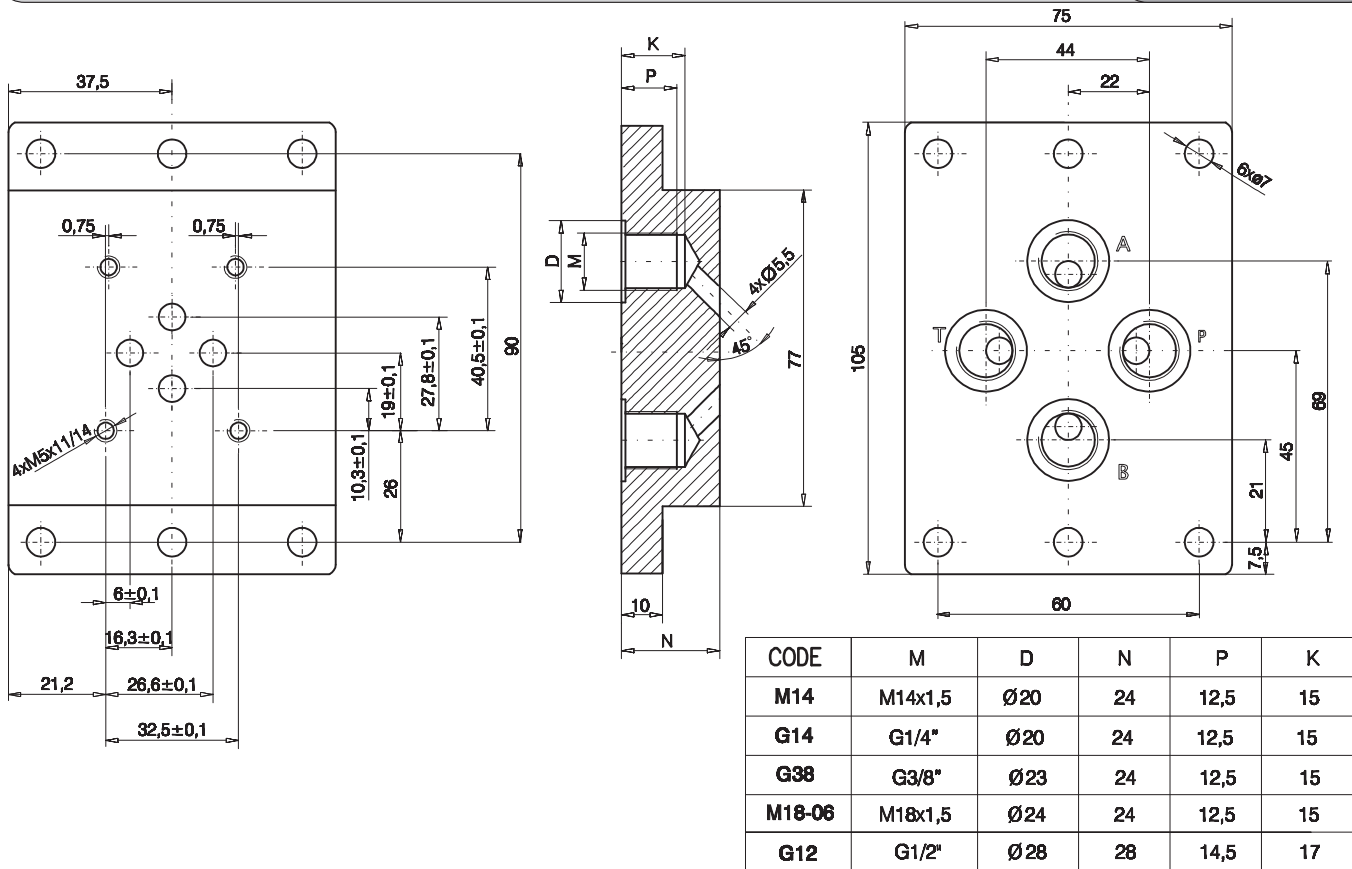
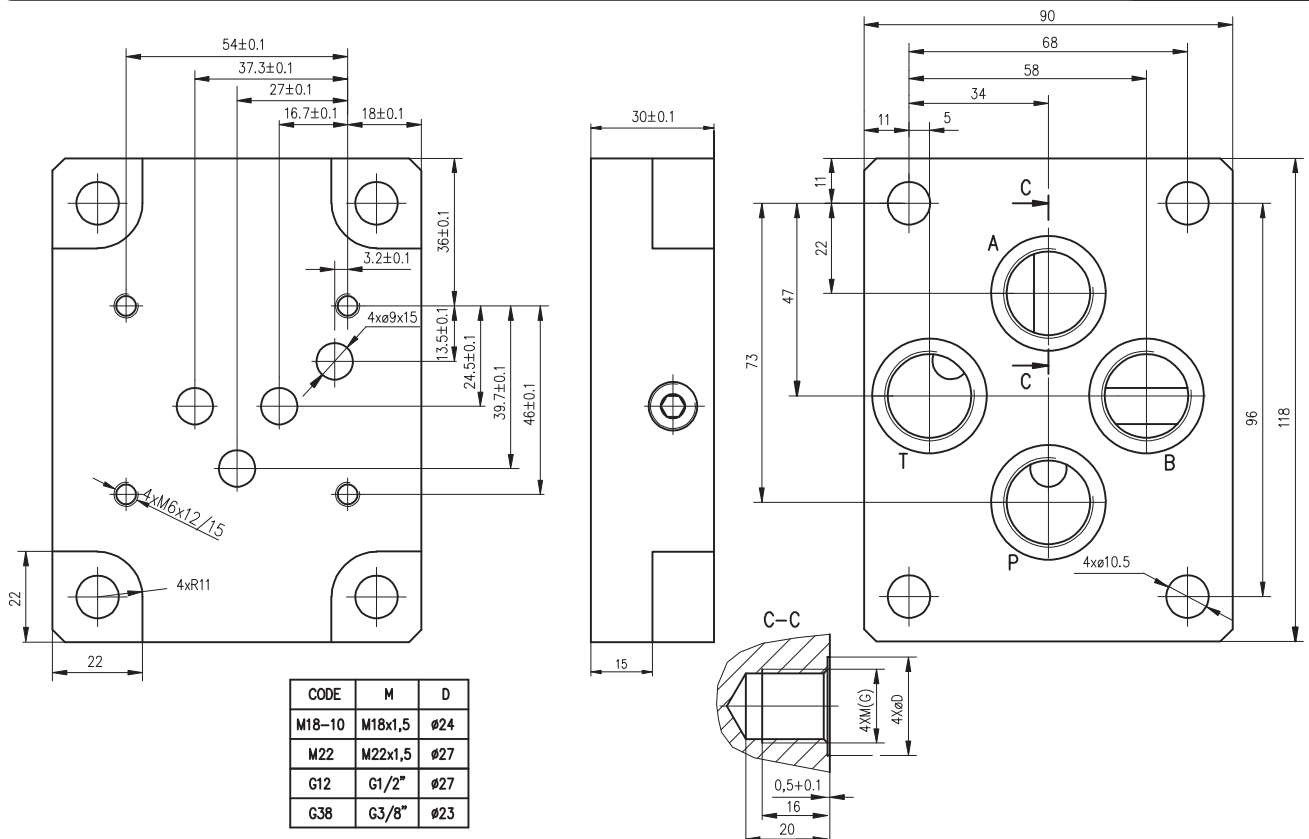
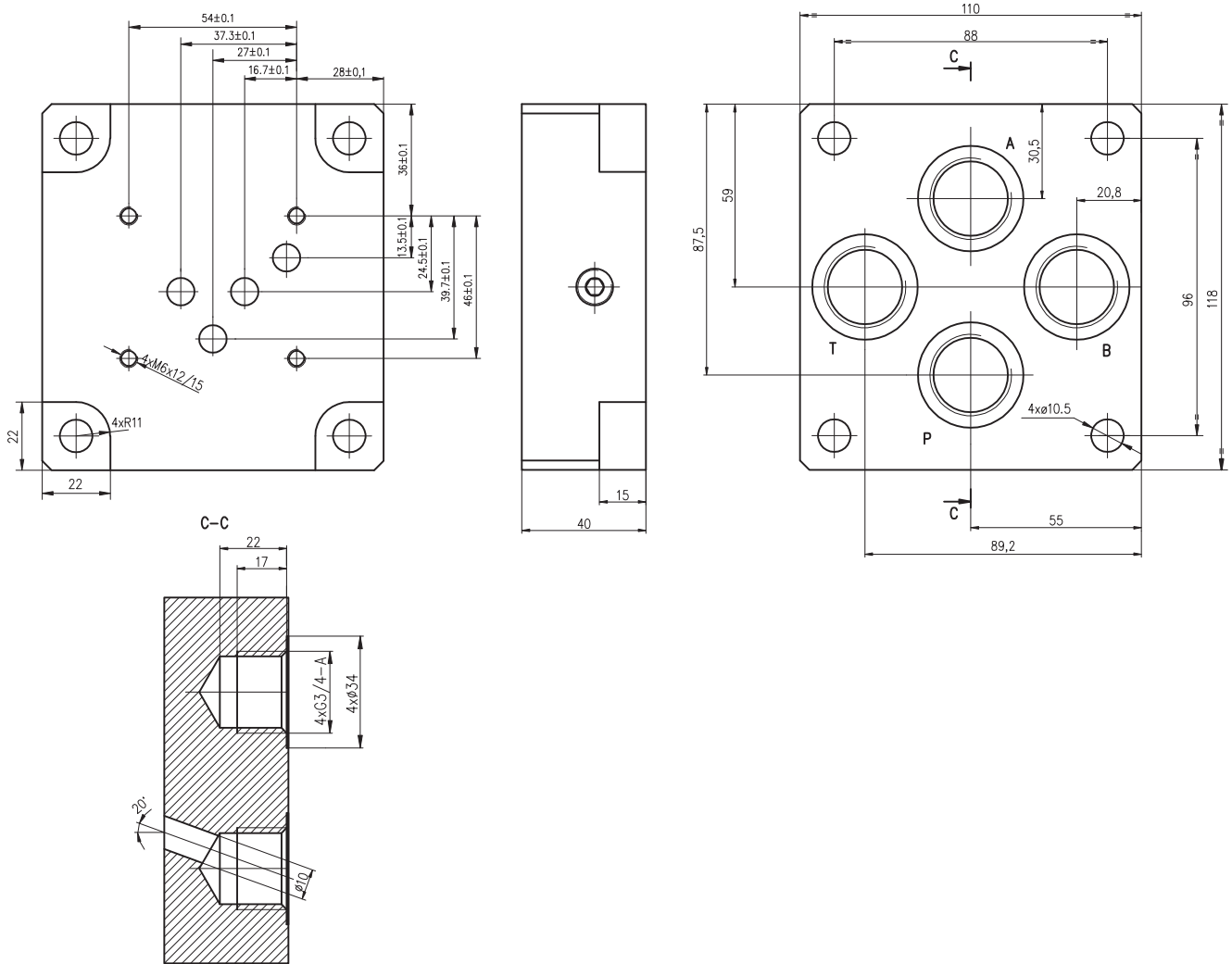


Subplates NG6



Subplates NG10





ORDERING CODE FOR SUBPLATES

SP *** - ***

Subplate

Nominal bore:

NG6 - 06

NG10 - 10

Threads:

M14 - M14x1,5 (for NG6)

G14 - G1/4" (for NG6)

G38 - G3/8" (for NG6 and NG10)

M18 - M18x1,5 (for NG6 and NG10)

G12 - G1/2" (for NG6 and NG10)

M22 - M22x1,5 (for NG10)

G34 - G3/4" (for NG10)