

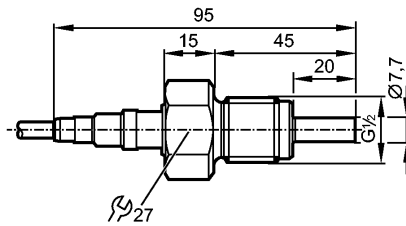


# SP321A

SPR12ABB/2G/6M



Flow sensors



### Product characteristics

Flow sensor for connection to evaluation units

Threaded type

Cable

Process connection: G 1/2 A

Ambient temperature -20...70 °C

ATEX approval

Group II, category 2G

### Application

Application: liquids and gases

Pressure rating [bar]: 30

Medium temperature [°C]: -20...70

### Electrical data

Connection to control monitor: VS4000

### Measuring / setting range

Liquids

Setting range [cm/s]: 3...300

Greatest sensitivity [cm/s]: 3...100

Gases

Setting range [cm/s]: 100...15000

Greatest sensitivity [cm/s]: 100...7500

### Accuracy / deviations

Max. temperature gradient of medium [K/min]: 30

### Reaction times

Response time [s]: 1...10

### Environment

Protection: IP 65 / IP 67

### Tests / approvals

Approval: ZELM 11 ATEX 0467  
IECEX ZLM 11.0005

Marking of the unit: Ex II 2G Ex ia IIC T4 Gb

Shock resistance: DIN IEC 68-2-27: 40 g (11 ms)

Vibration resistance: DIN IEC 68-2-6: 10 g (55...2000 Hz)

MTTF [Years]: 8519

### Mechanical data

Process connection: G 1/2 A

Materials (wetted parts): stainless steel 316L / 1.4404



# SP321A

SPR12ABB/2G/6M



Flow sensors

Housing materials	stainless steel 316L / 1.4404
Weight [kg]	0.357

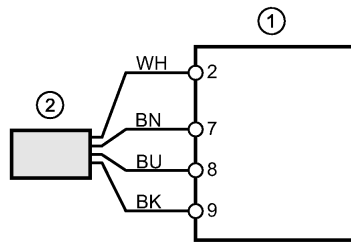
### Electrical connection

Connection	TPE-S cable / 6 m; 4 x 0.34 mm <sup>2</sup>
Max. cable length [m]	100 (4 x 0.5mm <sup>2</sup> )

### Wiring

Core colors

- BK black
- BN brown
- BU blue
- WH white



1 SR307A / VS4000  
 2 SP321A

### Remarks

Remarks	In principle, the type test according to 94/9/EC (ATEX) only takes atmospheric conditions (0.8...1.1 bar) into account. For pressures outside this range use must be assessed and approved by the user. Adhere to the operating instructions and the type test certificate.
---------	---

Pack quantity [piece]	1
-----------------------	---