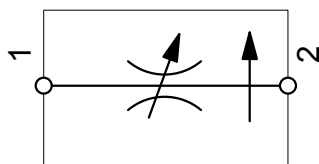
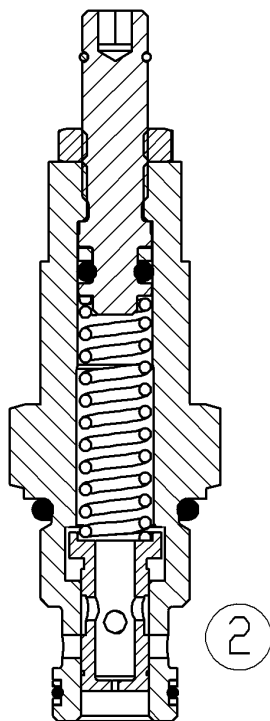


SYMBOL



up to 15 l/min
up to 350 bar

FUNCTION



The SR06 is a 2 way directional flow control-valve, which keeps the nominal flow constant by means of a control function. The nominal flow is almost independent of the pressure and the viscosity. The valve is equipped with fixed orifice and integrated pressure compensator. The measuring orifice determines the nominal flow-adjustment range which is adjustable within a small range. If there is flow from port 1 to 2, a pressure differential is created at the measuring orifice. If the pressure compensator is in regulating position there is a balance of pressure differential at control piston surface on the one side and spring force on the other side. With rising flow (higher pressure differential) the cross-section of the regulating orifice will be controlled that there is a balance of forces. Hereby a constant outlet flow will be reached.

Flow Regulator

Spool type, direct acting

Cartridge-Minivalve – 350 bar
SR06-01

UNF

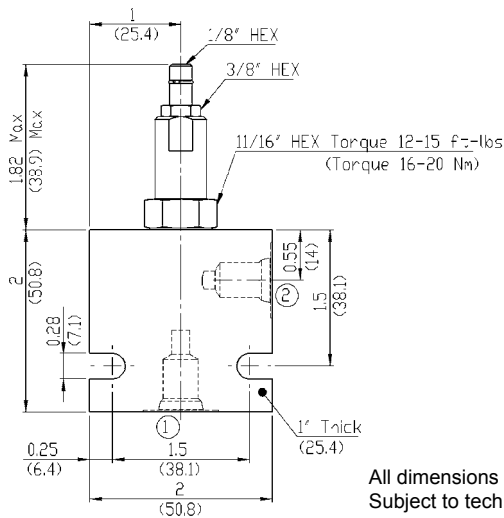
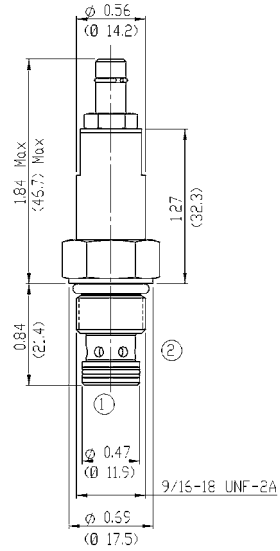
FEATURES

- All exposed surfaces corrosion-proof
- Pressure compensated flow control of consumers
- All valve parts made of high-strength steel with hardened and ground components to ensure minimal wear and extend service life
- Superior stability throughout the entire flow range

SPECIFICATIONS

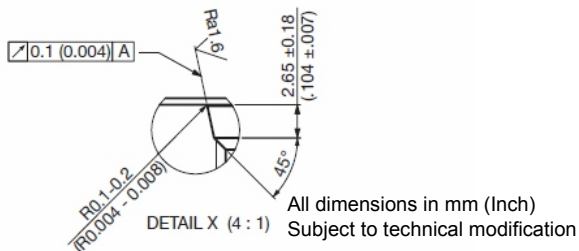
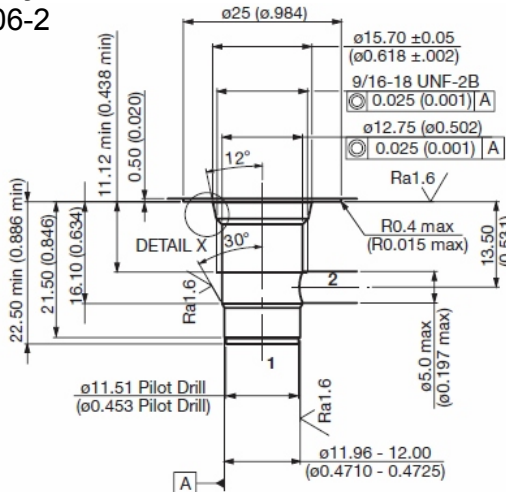
Operating pressure:	max. 350 bar at port 1 (pump) max. 210 bar at port 2 (consumer)
Nominal flow:	max. 15 l/min
Flow ranges:	0,25 up to 1,00 l/min 1,00 up to 3,80 l/min 3,80 up to 15,0 l/min
Temperature range of operating fluid:	Min. – 30°C up to max. +100° C
Ambient temperature range:	Min. – 30°C up to max. + 60° C
Fluid:	Hydraulic fluid to DIN 51524 T1 + T2
Viscosity range:	min. 7,4 mm ² /s up to max. 420 mm ² /s
Filtration:	Class 21 / 19 /16 according to ISO 4406 or cleaner
MTTF _d :	150 years
Installation:	no orientation restrictions
Materials:	Valve body: steel with hardened work surfaces Piston: hardened and ground steel Seals: NBR (Standard) FKM (optional, temperature range -20°C up to +120°C)
Cavity:	Back-up rings: TPE-E
Weight:	FC06-2 0,023 kg

DIMENSIONS



All dimensions in inch (mm)
Subject to technical modification

Cavity FC06-2



All dimensions in mm (Inch)
Subject to technical modification

Tools

Code	Part No.	Image
Twist drill	2582046	
Countersink	2582047	

MODEL CODE

SR06 - 01 - C - N - 0.3 V 0.1

Basic model
flow control valve, direct acting

Type
01 = Standard

Body & ports
C = cartridge only
*versions in line bodies on request

Seals
N = NBR (Standard)
V = FKM (optional)

Nominal flow range
0.3 = 0.25 up to 1,00 l/min (0.3 gpm)
1.0 = 1.00 up to 3,80 l/min (1.0 gpm)
4.0 = 3.80 up to 15,0 l/min (4.0 gpm)

Adjustment option
V = adjustable by tool

Setting
none = 50% of maximal Nominal flow
0.1 = 0.23 l/min – optional pre-adjustment on request

Standard models

Name	Part No.
SR06-01-C-N-0.3V	2610213
SR06-01-C-N-1.0V	2610194
SR06-01-C-N-4.0V	2610214

Other types on request

*Line bodies

Code	Part No.	Material	Ports	Pressure
FH062-SB2	3740528	steel, zinc plated	G1/4	420 bar
FH062-AB2	3741297	Alu, anodized	G1/4	245 bar

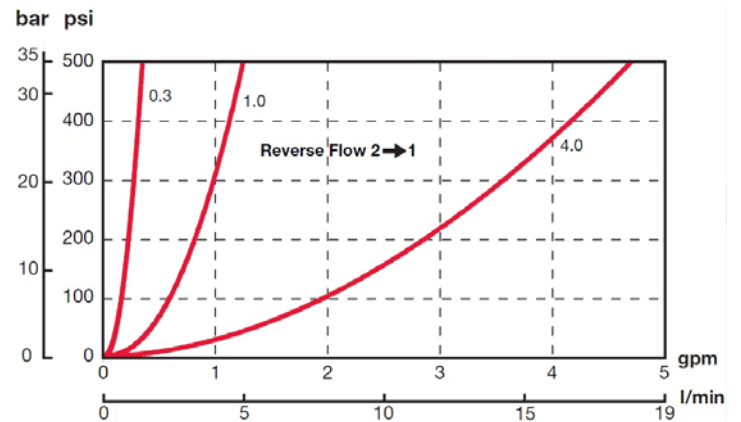
other line bodies on request

Seal kits

Code	Part No.
Seal kit-NBR	2610184
Seal kit-FKM	2610185

PERFORMANCE

Measured at 28 mm²/s and T oil = 38°C



Annotation
The technical information in this brochure are relating to the operating conditions and applications. At deviant applications and/or operating conditions please contact the technical dept. Technical information are subject to technical modifications.

HYDAC Fluidtechnik GmbH
Justus-von-Liebig-Str. 5
66280 Sulzbach / Saar
Tel.: 06897 / 509 -0
Fax: 06897 / 509 -598
Email: flutec@hydac.com